

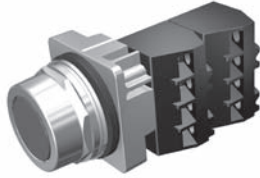
# Push Buttons & Signaling Devices

## 30mm Water, Oil Tight & Corrosion Resistant – Class 52

### Push Button

#### Selection Guide

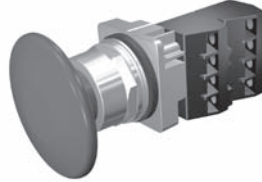
#### Momentary Push Button - Non-Illuminated



Flush Head



Extended Head



Large Mushroom Head 2 1/2"



Small Mushroom Head 1 3/4"

Part Number	<b>52</b>	<u>    </u>	<u>    </u>	<u>    </u>	<u>    </u>	<u>    </u>
		<b>a</b>	<b>M</b>	<b>c</b>	<b>d</b>	<b>e<sup>1</sup></b>
			<b>b</b>			

<b>a</b>	Code	Finish
	<b>P</b>	Chrome - Command 52
	<b>B</b>	Epoxy Coated - Black Max

<b>b</b>	Code	Type
	<b>M</b>	Momentary Push Button

<b>c</b>	Code	Style / Head Type
	<b>Flush / Extended Cap</b>	
	<b>8A</b>	Flush
	<b>8B</b>	Extended
	<b>Mushroom Head Metal</b>	
	<b>9A</b>	Small Mushroom Head 1 3/4" (44.5mm)
	<b>Mushroom Head Plastic</b>	
	<b>9W</b>	Small Mushroom Head 1 3/4" (44.5mm)
	<b>9V</b>	Large Mushroom Head 2 1/2" (63.5mm)

<b>d</b>	Code	Plastic	Metal
	<b>1</b>	Black	—
	<b>2</b>	Red	Red
	<b>3</b>	Green	Green
	<b>4</b>	Yellow	—
	<b>5</b>	Blue	—
	<b>6</b>	Gray	—
	<b>7</b>	All Color Caps	—
	<b>8</b>	Orange	—
<b>C</b>	—	Chrome	

<b>e<sup>1</sup></b>	Code	Contact Blocks
	<b>A</b>	1 NO + 1 NC
	<b>B</b>	2 NO + 2 NC
	<b>C</b>	3 NO + 3 NC
	<b>D</b>	4 NO + 4 NC
	<b>E</b>	1 NC (LB)
	<b>F</b>	2 NO
	<b>G</b>	2 NC
	<b>H</b>	1NO (EM)
	<b>J</b>	1 NC
	<b>K</b>	1 NO

<sup>1</sup> For operator without contact blocks leave position e blank.

# Push Buttons & Signaling Devices

## 30mm Water, Oil Tight & Corrosion Resistant – Class 52

### Push Buttons

1  
2  
3  
4  
5  
6  
7  
8  
9  
10

#### Selection Tables

#### Momentary Push Button - Non-Illuminated

Head Style	Contacts	Color	Finish	
			Chrome	Black Max
Flush	—	Less cap	<b>52PM8</b>	<b>52BM8</b>
		Black	<b>52PM8A1</b>	<b>52BM8A1</b>
		Red	<b>52PM8A2</b>	<b>52BM8A2</b>
		Green	<b>52PM8A3</b>	<b>52BM8A3</b>
		Yellow	<b>52PM8A4</b>	<b>52BM8A4</b>
	1 NO - 1 NC	Black	<b>52PM8A1A</b>	<b>52BM8A1A</b>
		Red	<b>52PM8A2A</b>	<b>52BM8A2A</b>
		Green	<b>52PM8A3A</b>	<b>52BM8A3A</b>
	1 NO	Black	<b>52PM8A1K</b>	<b>52BM8A1K</b>
		Red	<b>52PM8A2K</b>	<b>52BM8A2K</b>
		Green	<b>52PM8A3K</b>	<b>52BM8A3K</b>
	1 NC	Red	<b>52PM8A2J</b>	<b>52BM8A2J</b>
Extended	—	Black	<b>52PM8B1</b>	<b>52BM8B1</b>
		Red	<b>52PM8B2</b>	<b>52BM8B2</b>
		Green	<b>52PM8B3</b>	<b>52BM8B3</b>
	1 NO	Black	<b>52PM8B1K</b>	<b>52BM8B1K</b>
		Red	<b>52PM8B2K</b>	<b>52BM8B2K</b>
1 NC	Red	<b>52PM8B2J</b>	<b>52BM8B2J</b>	
Mushroom Head Plastic Ø 1 3/4"	—	Less cap	<b>52PM9</b>	<b>52BM9</b>
		Red	<b>52PM9W2</b>	<b>52BM9W2</b>
	1 NO	Green	<b>52PM9W3K</b>	<b>52BM9W3K</b>
	1 NO - 1 NC	Black	<b>52PM9W1A</b>	<b>52BM9W1A</b>
		Red	<b>52PM9W2A</b>	<b>52BM9W2A</b>
1 NO - 1 NC	Green	<b>52PM9W3A</b>	<b>52BM9W3A</b>	
Mushroom Head Plastic Ø 2 1/2"	—	Red	<b>52PM9V2</b>	<b>52BM9V2</b>
		Black	<b>52PM9V1A</b>	<b>52BM9V1A</b>
	1 NO - 1 NC	Red	<b>52PM9V2A</b>	<b>52BM9V2A</b>
		Green	<b>52PM9V3A</b>	<b>52BM9V3A</b>

Readily available items are in **bold**.  
This is a small representation of stocked items.