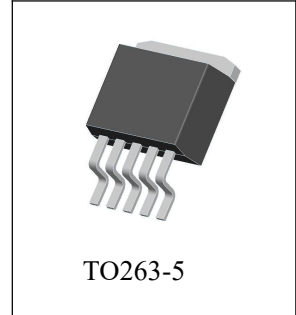


D2652

High Current Low Dropout Regulators

General Description

The D2652 is a high current, high accuracy and low-dropout voltage regulator. The 5A LDO regulator features 560 mV (full load) dropout voltage and very low ground current. Designed for high-current loads, these devices also find applications in lower current, low-dropout critical systems, where their dropout voltages and ground current values are important attributes. Along with a total accuracy of $\pm 2\%$ (over temperature, line, and load regulation) the regulator features very fast transient recovery from input voltage surges and output load current changes.



The D2652 has an adjustable output that can be set by two external resistors to a voltage between 1.24V and 15V. In addition, the device is fully protected against over current faults, reversed input polarity, reversed lead insertion, and over temperature operation. A TTL/CMOS logic enable (EN) pin is available in the D2652 to shutdown the regulator. When not used, the device can be set to continuous operation by connecting EN to the input (IN).

The D2652 is available in TO263-5 package.

Features

- High Current Capability
- Low-Dropout Voltage
- Low Ground Current
- Accurate 1% Guaranteed Tolerance
- Fast Transient Response
- Operating Input Voltage Range: 3V to 26V
- 1.24V to 15V Adjustable Output Voltage
- Zero-Current Shutdown Mode
- Adjustable Version

Package Information

| Part NO. | Package Description | Package Marking | Package Option |
|----------|---------------------|---------------------------|---------------------|
| D2652-AD | TO263-5 | CHMC D2652 AD SXXXX | 50/Tube 800/Reel |

CHMC:Trademark

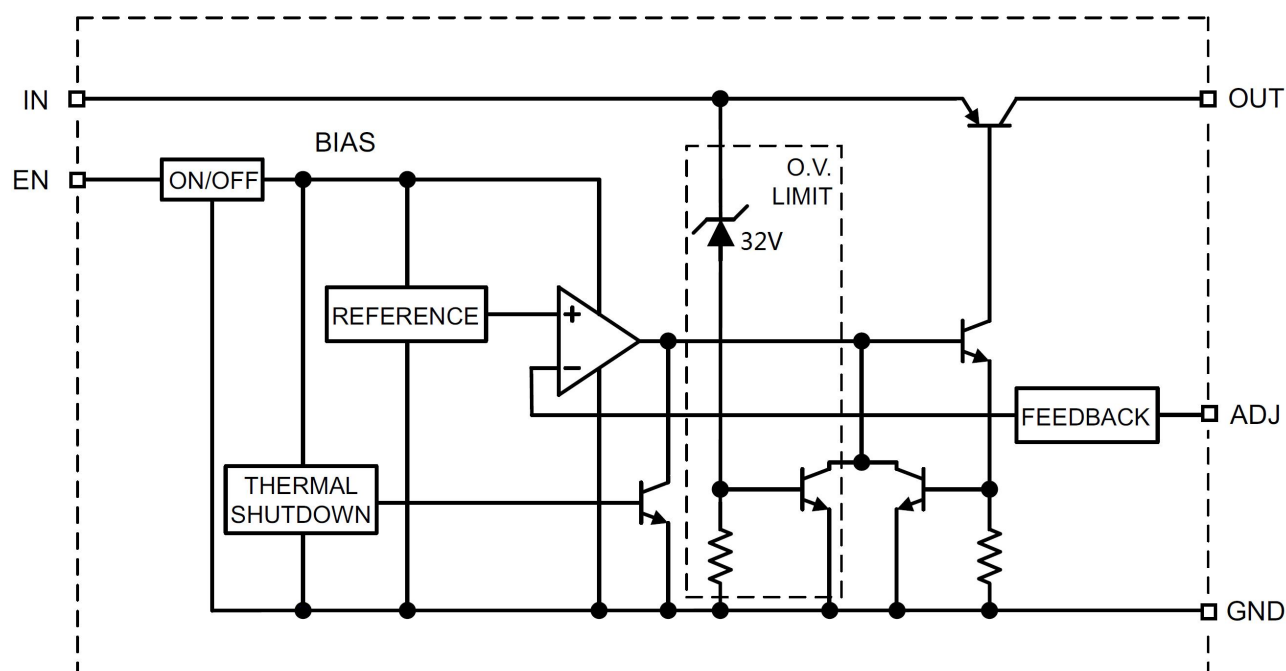
D2652-AD:Part NO.

SXXXX:Lot NO.

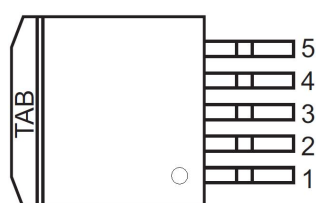
Applications

- Processor Peripheral and I/O Supplies
- High-Efficiency “Green” Computer Systems
- Automotive Electronics
- High-Efficiency Linear Low Power Supplies
- Battery Powered Equipment
- PC Add-In Cards
- High-Efficiency Post-Regulator for Switching Supply

Functional Block Diagram



Pin Configuration



D2632-AD(TO263-5)

Pin Description

| Pin Number | Pin Name | Function Description |
|------------|------------------|---|
| 1 | EN | Enable pin, Active high TTL/CMOS compatible control input. Logic-high=enable, Logic-low=shutdown. Do not float. |
| 2 | V _{IN} | Supplies the current to the output power device. |
| 3,TAB | GND | Ground TAB is also connected internally to the IC's ground on both Packages. |
| 4 | V _{OUT} | The regulator output voltage. |
| 5 | ADJ | Adjustable regulator feedback input that connects to the resistor voltage divider that is placed from V _{OUT} to GND in order to set the output voltage. |

Absolute Maximum Ratings

| Parameter Name | Symbol | Value | Unit |
|---|-------------------|-----------------------|------|
| Power Dissipation | P _D | Internally Limited | |
| Input Supply Voltage (Note1) | V _{IN} | -20~+50 | V |
| Enable Input Voltage | V _{EN} | -0.3V~V _{IN} | V |
| Operating Junction Temperature | T _J | -40~+125 | °C |
| Lead Temperature (soldering, 5 seconds) | T _{LEAD} | 260 | °C |
| Storage Temperature Range | T _{STG} | -55~+150 | °C |
| Thermal Resistance(JC) | θ _{JC} | 3 | °C/W |
| Thermal Resistance(JA) | θ _{JA} | 28 | °C/W |

Notice: The maximum allowable power dissipation is a function of ambient temperature, the maximum allowable junction temperature and the thermal resistance from junction to air (i.e., T_A, T_J, θ_{JA}). Exceeding the maximum allowable power dissipation will cause the device operating junction temperature to exceed the maximum +125°C rating. Sustained junction temperatures above +125°C can impact the device reliability.

Note1: Maximum positive supply voltage of 50V must be of limited duration(<100ms) and duty cycle(<1%).The maximum continuous supply voltage is 26V. Exceeding the absolute maximum rating may damage the device.

Recommended Operating Conditions

| Parameter Name | Symbol | Value | Unit |
|-------------------------|-----------------|--------|------|
| Operating Input Voltage | V _{IN} | +3~+26 | V |

Electrical Characteristics

All measurements at $T_J = 25^\circ\text{C}$ unless otherwise noted. $V_{IN} = V_{OUT} + 1\text{V}$, $I_{OUT} = 100\text{mA}$,

Bold values indicate $-40^\circ\text{C} \leq T_J \leq +125^\circ\text{C}$.

| Parameter Name | Symbol | Test Conditions | | Min. | Typ. | Max. | Units |
|---|---------------------------------|--|---|-------|------|-------|---------|
| Output Voltage | | | | | | | |
| Output Voltage Accuracy | ΔV_{OUT} | 100mA≤I _{OUT} ≤5A, (V _{OUT} +1V) ≤V _{IN} ≤26V | | -2 | | 2 | % |
| Line Regulation | $\Delta V_{OUT}/\Delta V_{IN}$ | I _O =100mA, (V _{OUT} +1V) ≤V _{IN} ≤26V | | | 0.1 | 0.5 | % |
| Load Regulation | $\Delta V_{OUT}/\Delta I_{OUT}$ | V _{IN} =V _{OUT} +1V, 100mA≤I _{OUT} ≤5A | | | 0.2 | 1 | % |
| Dropout Voltage | V _{DO} | I _O =100mA | Δ V _{OUT} = -1% (*1) | | 100 | 200 | mV |
| | | I _O =750mA | | | 220 | | |
| | | I _O =2.5A | | | 300 | | |
| | | I _O =5A | | | 560 | 800 | |
| Ground Current | | | | | | | |
| Ground Current | I _{GND} | I _O =750mA | V _{IN} =V _{OUT} +1V (*2) | | 5 | 20 | mA |
| | | I _O = 2.5A | | | 15 | | |
| | | I _O =5A | | | 60 | 150 | |
| Ground Pin Current at Dropout | I _{GND_DO} | V _{IN} =0.5V less than specified V _{OUT} , I _{OUT} =10mA | | | 2 | | mA |
| Current Limit | I _{LIMIT} | V _{OUT} =0V (*3) | | 5 | 7 | | A |
| Output Noise Voltage(10Hz to 100kHz) I _L =100mA | e _N | C _L =10μF | | | 400 | | μV(rms) |
| | | C _L =33μF | | | 260 | | |
| Ground Pin Current in Shutdown | I _{SHDN} | V _{IN} =26V | | | 32 | | μA |
| Reference | | | | | | | |
| Reference Voltage | V _{REF} | (*4) | | 1.215 | | 1.267 | V |
| Adjust Pin Bias Current | I _{ADJ} | | | | 40 | 80 | nA |
| | | | | | | 120 | |
| Enable Input | | | | | | | |
| Input Logic Voltage | V _{ENABLE} | Low (OFF) | | | | 0.8 | V |
| | | High (ON) | | 2.4 | | | |
| Enable Pin Input Current | I _{EABLE} | V _{EN} =4.2V | | | 15 | 30 | μA |
| | | | | | | 75 | |
| | | V _{EN} =0.8V | | | | 2 | μA |
| | | | | | | 4 | |
| Regulator Output Current in Shutdown | I _{OUT-SHDN} | (*5) | | | 10 | | μA |
| | | | | | | 20 | |

* 1: Dropout voltage is defined as the input-to-output differential when the output voltage drops to 99% of its nominal value with $V_{OUT} + 1\text{V}$ applied to V_{IN} .

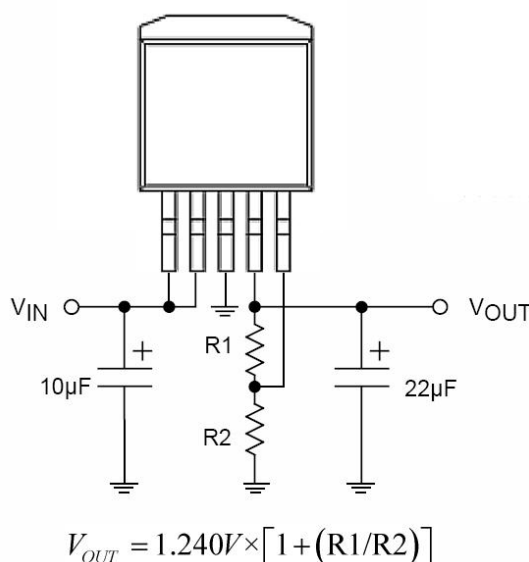
* 2: Ground pin current is the regulator quiescent current. The total current drawn from the source is the sum of the load current

plus the ground pin current.

- * **3:** $V_{IN} = V_{OUT} \text{ (nominal)} + 1V$. For example, use $V_{IN} = 4.3V$ for a 3.3V regulator or use 6V for a 5V regulator. Employ pulse-testing procedures to minimize temperature rise.
- * **4:** $V_{REF} \leq V_{OUT} \leq (V_{IN} - 1V)$, $3V \leq V_{IN} \leq 26V$, $10mA < I_L \leq I_{FL}$, $T_J \leq T_J \text{ (MAX)}$.
- * **5:** $V_{EN} \leq 0.8V$, $V_{IN} \leq 26V$ and $V_{OUT} = 0$.

Typical Application

Below is adjustable output voltage configuration. For best results, the total series resistance should be small enough to pass the minimum regulator load current.



Application Information

The D2652 is a high performance low-dropout voltage adjustable regulator suitable for all moderate to high-current voltage regulator application. Its 560mV typical dropout voltage at full load makes it especially valuable in battery-powered systems and as high efficiency noise filters in post-regulator applications. Unlike older NPN-pass transistor designs, where the minimum dropout voltage is limited by the base-emitter voltage drop and collector-emitter saturation voltage, dropout performance of the PNP output of this device is limited merely by the low V_{CE} saturation voltage.

A trade-off for the low dropout voltage is a varying base drive requirement. The D2652 is a fully protected from damage due to fault condition. Current limiting is provided. This limiting is linear; output current under over-load conditions is constant. Thermal shutdown disables the device when the die temperature exceeds the

125°C maximum safe operating temperature. The output structure of this regulator allows voltages in excess of the desired output voltage to be applied without reverse current flow. D2652 offers a logic level ON/OFF control: when disabled, the device draws 32μA at maximum 26V input.

Capacitor Requirements

For stability and minimum output noise, a capacitor on the regulator output is necessary. The value of this capacitor is dependent upon the output current; lower currents allow smaller capacitors. D2652 regulator is stable with the following minimum capacitor values at full load: 10μF. This capacitor need not be an expensive low ESR type: aluminum electrolytics are adequate. In fact, extremely low ESR capacitors may contribute to instability. Tantalum capacitors are recommended for systems where fast load transient response is important.

Where the regulator is powered from a source with a high AC impedance, a 0.1μF capacitor connected between Input and GND is recommended.

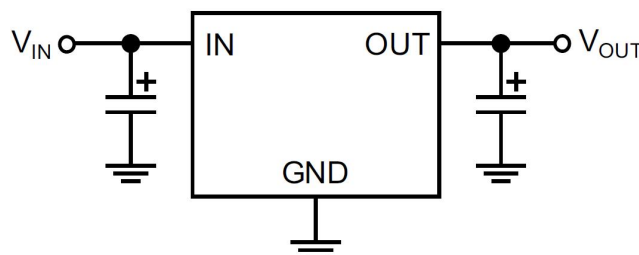


Fig. Linear Regulators Require Only Two Capacitors for Operation

Minimum Load Current

The D2652 regulator operates within a specified loads. If the output current is too small, leakage currents dominate and the output voltage rises. A minimum load current of 10 mA is necessary for proper regulation and to swamp any expected leakage current across the operating temperature range.

For best performance the total resistance (R_1+R_2) should be small enough to pass the minimum regulator load current of 10 mA.

Adjustable Regulator Design

The output voltage can be programmed anywhere between 1.25V and the 15V. Two resistors are used. The resistor values are calculated by:

$$R_1 = R_2 \left(\frac{V_{OUT}}{1.240} - 1 \right)$$

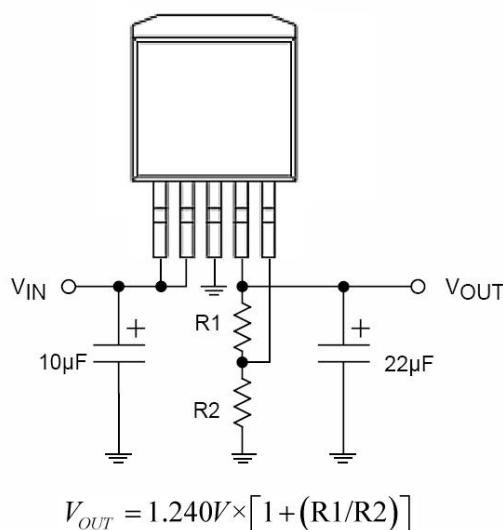


Fig. Adjustable Regulator with Resistors

Where V_{OUT} is the desired output voltage. Figure shows component definition. Applications with widely varying load currents may scale the resistors to draw the minimum load current required for proper operation.

Enable Input

D2652 features an enable (EN) input that allows ON/OFF control of the device. The EN input has TTL/CMOS compatible thresholds for simple interfacing with logic, or may be directly tied to V_{IN} . Enabling the regulator requires approximately 20µA of current into the EN pin.

Transient Response and 5V to 3.3V Conversion

The D2652 has excellent response to variations in input voltage and load current. By virtue of its low dropout voltage, the device does not saturate into dropout as readily as similar NPN-based designs. A 3.3V output LDO will maintain full speed and performance with an input supply as low as 4.2V, and will still provide some regulation with supplies down to 3.8V, unlike NPN devices that require 5.1V or more for good performance and become nothing more than a resistor under 4.6V of input. D2652 PNP regulators provide superior performance in “5V to 3.3V” conversion applications than NPN regulators, especially when all tolerances are considered.

Thermal Design

Linear regulators are simple to use. The most complicated design parameters to consider are thermal characteristics. Thermal design requires the following application-specific parameters:

- Maximum ambient temperature, T_A
- Output Current, I_{OUT}
- Output Voltage, V_{OUT}

- Input Voltage, V_{IN}

First, calculate the power dissipation of the regulator from these numbers and the device parameters from this datasheet.

$$P_D = I_{OUT}(1.05V_{IN} - V_{OUT})$$

Where the ground current is approximated by 5% of I_{OUT} . Then the heat sink thermal resistance is determined with this formula:

$$\theta_{SA} = \frac{T_{JMAX} - T_A}{P_D} - (\theta_{JC} + \theta_{CS})$$

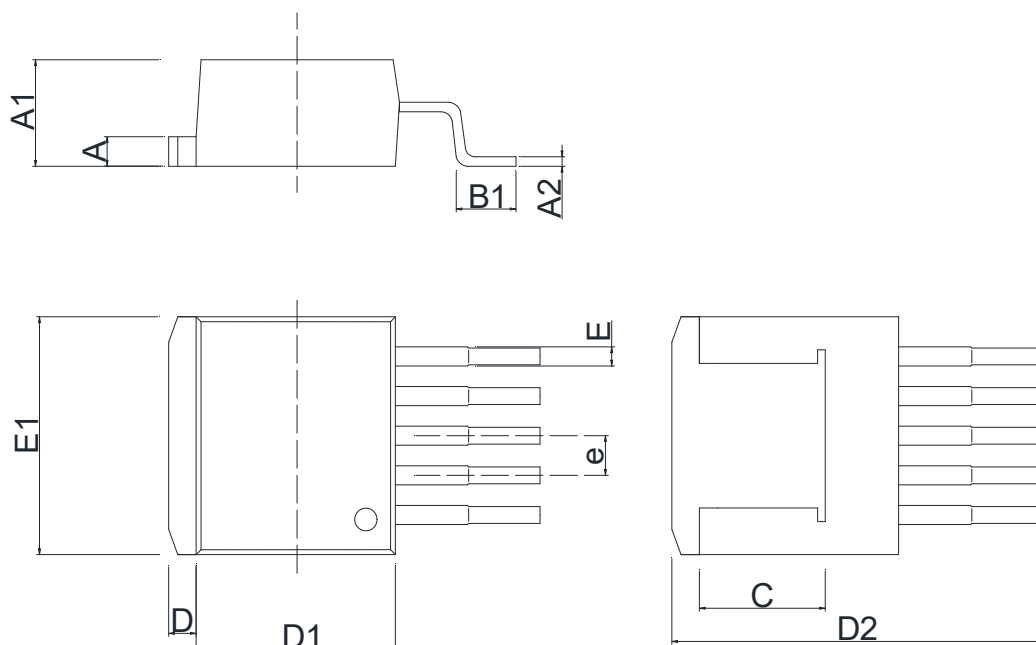
Where $T_{J(MAX)} \leq 125^{\circ}\text{C}$ and θ_{CS} is between 0°C/W and 2°C/W .

The heat sink may be significantly reduced in applications where the minimum input voltage is known and is large compared with the dropout voltage. Use a series input resistor to drop excessive voltage and distribute the heat between this resistor and the regulator. The low dropout properties of regulators allow very significant reductions in regulator power dissipation and the associated heat sink without compromising performance. When this technique is employed, a capacitor of at least $0.1\mu\text{F}$ is needed directly between the input and regulator ground.

Outline Dimensions

TO263-5

Unit: mm



| Symbol | Dimensions In Millimeters | | Dimensions In Inches | |
|--------|---------------------------|--------|----------------------|-------|
| | Min | Max | Min | Max |
| A | 1.170 | 1.370 | 0.046 | 0.054 |
| A1 | 4.350 | 4.750 | 0.171 | 0.187 |
| A2 | 0.310 | 0.530 | 0.012 | 0.021 |
| B1 | 2.340 | 2.740 | 0.092 | 0.108 |
| C | 5.080 REF | | 0.200 REF | |
| D | 1.170 | 1.370 | 0.046 | 0.054 |
| D1 | 8.100 | 8.900 | 0.318 | 0.350 |
| D2 | 14.550 | 15.550 | 0.572 | 0.612 |
| E | 0.660 | 0.860 | 0.025 | 0.034 |
| E1 | 9.800 | 10.310 | 0.385 | 0.406 |
| e | 1.700 (BSC) | | 0.067 (BSC) | |

Statements

- Silicore Technology reserves the right to make changes without further notice to any products or specifications herein. Before customers place an order, customers need to confirm whether datasheet obtained is the latest version, and to verify the integrity of the relevant information.
- Failure or malfunction of any semiconductor products may occur under particular conditions, customers shall have obligation to comply with safety standards when customers use Silicore Technology products to do their system design and machine manufacturing, and take corresponding safety measures in order to avoid potential risk of failure that may cause personal injury or property damage.
- The product upgrades without end, Silicore Technology will wholeheartedly provide customers integrated circuits that have better performance and better quality.