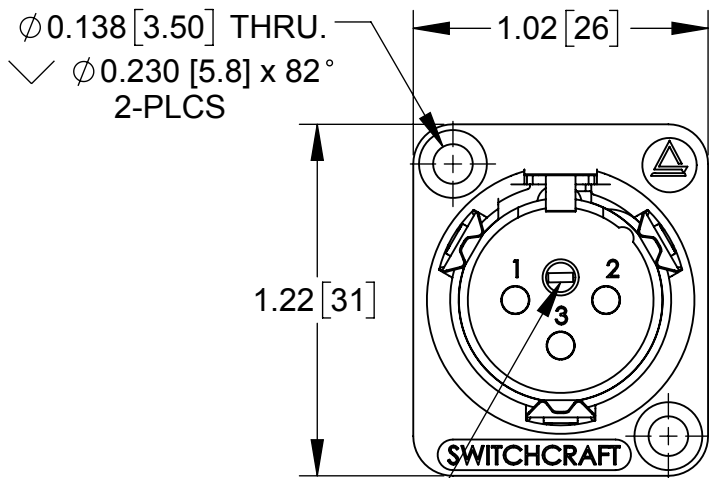


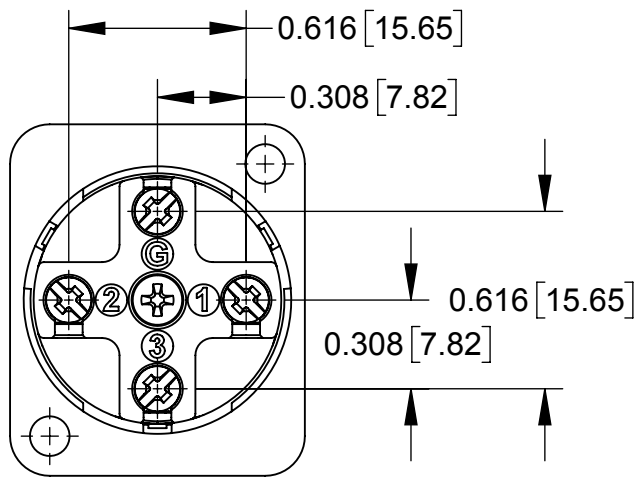
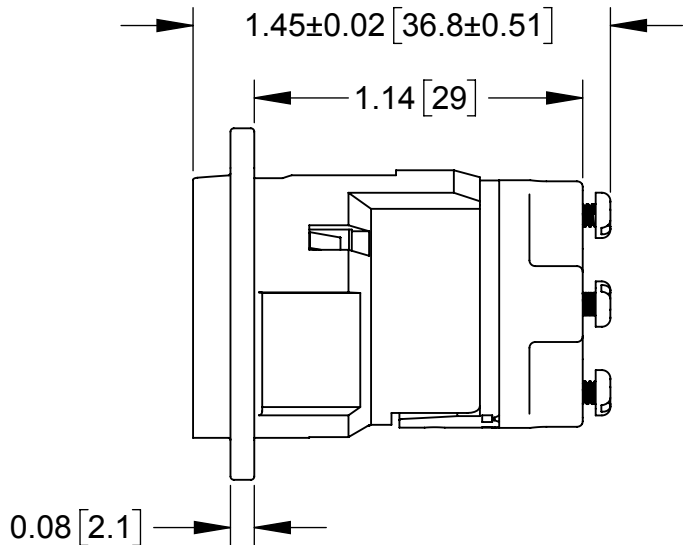
PART NUMBER	CONTACT PLATING	HOUSING FINISH
E3MSW	SILVER	SATIN NICKEL
E3MAUSW	GOLD	SATIN NICKEL
E3MBSW	SILVER	BLACK CHROME WITH CHEMICAL TREATMENT
E3MBAUSW	GOLD	BLACK CHROME WITH CHEMICAL TREATMENT

NOTE: ADD SUFFIX "EL" TO ABOVE PART NUMBERS FOR FIXED, NON-REMOVABLE CONNECTOR INSERT VERSION.

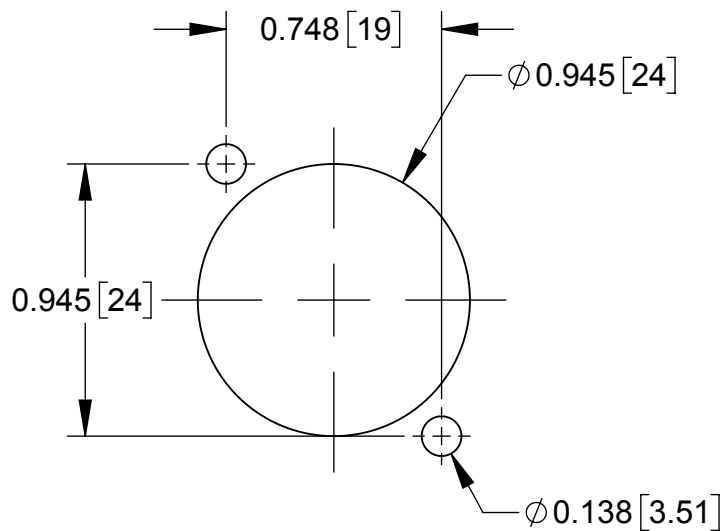


INSERT LOCKING SCREW
SEE NOTE 4

FRONT VIEW



REAR (WIRING) VIEW



RECOMMENDED PANEL CUT-OUT

NOTES:

- MATERIAL:
SHELL - DIE CAST ZINC ALLOY, SATIN NICKEL OR BLACK CHROME FINISH
INSULATOR INSERT, TERMINAL COVER - THERMOPLASTIC
CONTACTS, TERMINAL POST - COPPER ALLOY, SILVER OR GOLD PLATED
INSERT LOCKING CAM - DIE CAST ZINC ALLOY
SCREWS - STAINLESS STEEL
- PLATING SPECIFICATIONS:
SILVER PLATE: 0.000120" [0.0003mm]
GOLD PLATE: 0.00002" [0.000508mm] GOLD OVER 0.0002" [0.00508mm] NICKEL
- WIRING INSTRUCTIONS:
TERMINALS ACCEPT 16 TO 26 AWG SOLID OR STRANDED WIRE CONDUCTORS.
RECOMMENDED STRIP & TIN LENGTH: 0.188" [4.8mm] TO 0.218" [5.5mm].
RECOMMENDED SCREW TERMINAL TORQUE: 2 in-lb [0.226 Nm] MAXIMUM.
- CLOCKWISE TURNING OF LOCKING SCREW SECURES INSERT IN HOUSING, COUNTERCLOCKWISE TURNING RELEASES INSERT.
DOES NOT APPLY TO NON-REMOVABLE INSERT VERSION CONNECTORS DENOTED BY SUFFIX "EL" IN THE PART NUMBER.
- THESE PRODUCTS ARE RoHS COMPLIANT.

CUSTOMER DRAWING

					<div>UNLESS OTHERWISE SPECIFIED</div> <div>1. ALL DIMENSIONS IN INCHES</div> <div>- TWO PLACE DECIMALS ±0.02</div> <div>- THREE PLACE DECIMALS ±0.005</div>	THIS DRAWING DESCRIBES A DESIGN CONSIDERED PROPRIETARY IN NATURE, DEVELOPED AND MANUFACTURED BY SWITCHCRAFT INC. AND IS RELEASED ON A CONFIDENTIAL BASIS FOR IDENTIFICATION PURPOSES ONLY.							
						SIZE	WIDTH		MULT	LBS/M	TEMPER		
						FINISH				MATERIAL			
						SPEC No.				SPEC No.			
						FIRST USED ON			SCALE 1.5:1		<div>Switchcraft®</div>		
0B	ADDED "EL" VERSION	05/04/12	PNK	SRC		DATE DRAWN	BY	CHKD	APVD				
0A	PROJECT 08025	02/14/12	PNK	SRC		02/14/12	PNK	PNK	SRC				
REV	ECO NUMBER	DATE	BY	APVD	NAME				PART No.		REV		
REVISIONS					DO NOT SCALE DRAWING		E3M SERIES, SCREW TERMINALS, RoHS				E3M_SW SERIES		0B