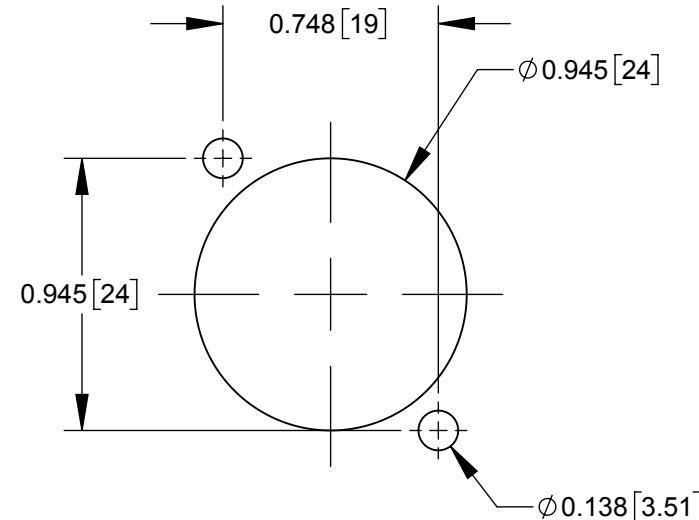
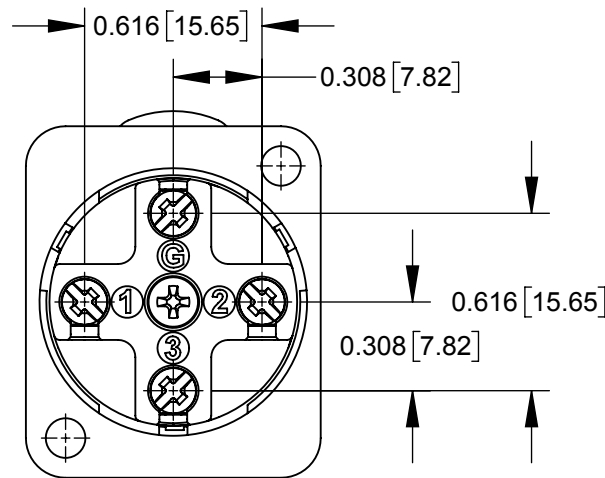
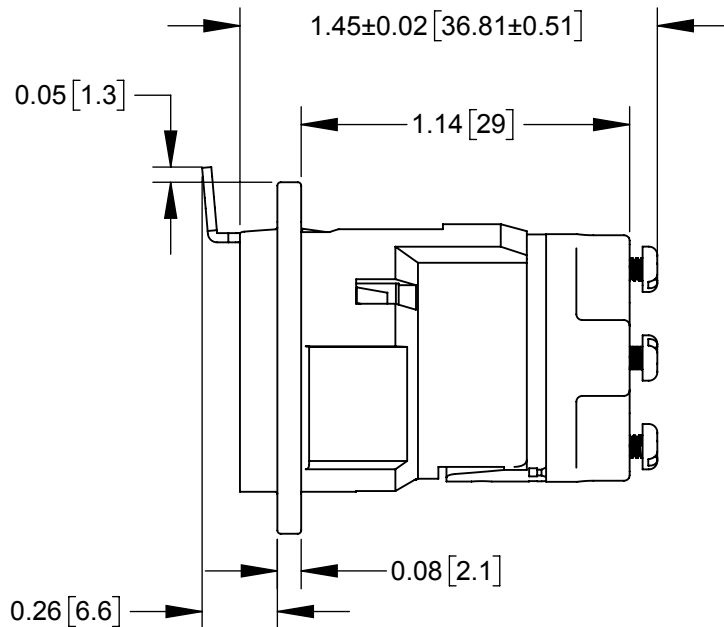
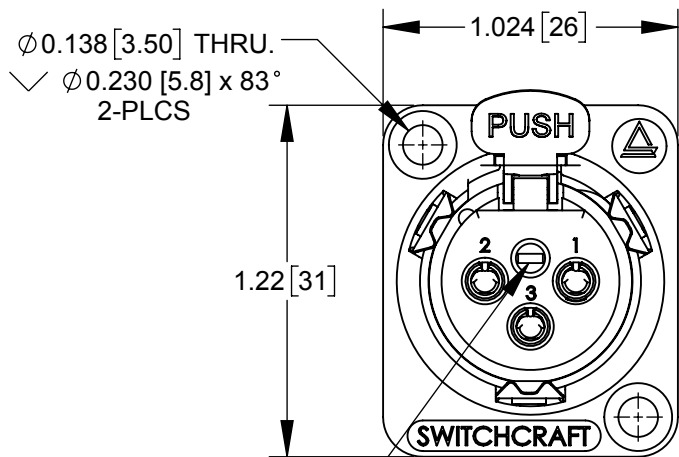


PART NUMBER	CONTACT PLATING	HOUSING FINISH
E3FSW	SILVER	SATIN NICKEL
E3FAUSW	GOLD	SATIN NICKEL
E3FBSW	SILVER	BLACK CHROME WITH CHEMICAL TREATMENT
E3FBAUSW	GOLD	BLACK CHROME WITH CHEMICAL TREATMENT

NOTE: ADD SUFFIX "EL" TO ABOVE PART NUMBERS FOR FIXED, NON-REMOVABLE CONNECTOR INSERT VERSION.



INSERT LOCKING SCREW
SEE NOTE 4

FRONT VIEW

REAR (WIRING) VIEW

RECOMMENDED PANEL CUT-OUT

NOTES:

- MATERIAL:
SHELL - DIE CAST ZINC ALLOY, SATIN NICKEL OR BLACK CHROME FINISH
INSULATOR INSERT, TERMINAL COVER - THERMOPLASTIC
CONTACTS, TERMINAL POST - COPPER ALLOY, SILVER OR GOLD PLATED
LATCH RELEASE - STEEL, NICKEL PLATED
INSERT LOCKING CAM - DIE CAST ZINC ALLOY
SCREWS - STAINLESS STEEL
- PLATING SPECIFICATIONS:
SILVER PLATE: 0.000120" [0.0003mm]
GOLD PLATE: 0.00002" [0.000508mm] GOLD OVER 0.0002" [0.00508mm] NICKEL
- WIRING INSTRUCTIONS:
TERMINALS ACCEPT 16 TO 26 AWG SOLID OR STRANDED WIRE CONDUCTORS.
RECOMMENDED STRIP & TIN LENGTH: 0.188" [4.8mm] TO 0.218" [5.5mm].
RECOMMENDED SCREW TERMINAL TORQUE: 2 in-lb [0.226 Nm] MAXIMUM.
- CLOCKWISE TURNING OF LOCKING SCREW SECURES INSERT IN HOUSING, COUNTERCLOCKWISE TURNING RELEASES INSERT.
DOES NOT APPLY TO NON-REMOVABLE INSERT VERSION CONNECTORS DENOTED BY SUFFIX "EL" IN THE PART NUMBER.
- THESE PRODUCTS ARE RoHS COMPLIANT.

CUSTOMER DRAWING

						THIS DRAWING DESCRIBES A DESIGN CONSIDERED PROPRIETARY IN NATURE, DEVELOPED AND MANUFACTURED BY SWITCHCRAFT INC. AND IS RELEASED ON A CONFIDENTIAL BASIS FOR IDENTIFICATION PURPOSES ONLY.																	
						UNLESS OTHERWISE SPECIFIED 1. ALL DIMENSIONS IN INCHES - TWO PLACE DECIMALS ±0.02 - THREE PLACE DECIMALS ±0.005	SIZE		WIDTH		MULT		LBS/M		TEMPER								
							FINISH						MATERIAL										
							SPEC No.						SPEC No.										
							FIRST USED ON				SCALE 1.5:1		Switchcraft®										
							DATE DRAWN		BY	CHKD		APVD											
0B	PROJECT 08025	05/04/12	PNK	SRC			02/14/12		PNK	02/14/12		02/14/12											
0A	PROJECT 08025	02/14/12	PNK	SRC									SHEET 1 OF 1										
REV	ECO NUMBER	DATE	BY	APVD		NAME						PART No.				REV							
REVISIONS						DO NOT SCALE DRAWING						E3F SERIES, SCREW TERMINALS, RoHS						E3F_SW SERIES				0B	