

GlobTek, Inc. www.globtek.com 186 Veterans Drive, Northvale, NJ 07647 Tel. (201) 784-1000 Fax (201) 784-0111	<table border="1"> <tr> <td data-bbox="305 105 1403 184"> Drawing Title: USB 3.1 TYPE-C connector Female chassis connector 24P straight SMT Model No. Connector </td><td data-bbox="1403 105 1534 184"></td></tr> <tr> <td data-bbox="305 184 1403 302"> Part No./Ordering No. JACK-USBC-241SMTV-COVER-4BQC02 </td><td data-bbox="1403 184 1534 302"> Rev A3 </td></tr> </table>	Drawing Title: USB 3.1 TYPE-C connector Female chassis connector 24P straight SMT Model No. Connector		Part No./Ordering No. JACK-USBC-241SMTV-COVER-4BQC02	Rev A3
Drawing Title: USB 3.1 TYPE-C connector Female chassis connector 24P straight SMT Model No. Connector					
Part No./Ordering No. JACK-USBC-241SMTV-COVER-4BQC02	Rev A3				

In Addition to GlobTek Inc.'s renewed ISO9001:2008 - Quality Management System Certification, GlobTek Inc. is now certified to:

ISO13485:2003 - Medical Devices Quality Management System Certification

ISO14001:2004 - Environmental Management System Certification

ISO Certificates are available online at <http://www.globtek.com/iso-certificates/>

The acceptance of this specification and use of the product described in this document indicates the acceptance and binding of the customer to Globtek TERMS AND CONDITIONS (attached to the end of this document), which supersede all other agreements, terms, and conditions (<http://www.globtek.com/terms-and-conditions/>).

Prop 65 Statement:<https://www.globtek.com/prop-65-statement.pdf>

Footnote:

GlobTek Inc. will not be liable for the safety and performance of these power supplies if unauthorized access and repair occurs. End user should consult applicable UL, CSA or EN standards for proper installation instruction.

Limitation of Use:

GlobTek products are intended for use with commercial, medical, and/or industrial equipment only. GlobTek product are not authorized for use as mission critical components in life support hazardous environment, nuclear or aircraft applications without prior written approval from the CEO of GlobTek Inc.

Contents of this document are subject to change without prior notice.

Customer Approval of Specification:

Please approve, sign and send back to GlobTek so we can complete order processing.

A delay in receipt of this form will delay delivery schedule.

Company Name:

Customer P/N:

Quote Number:

Date:

Authorized Representative Name:

Authorized Representative Signature:

GlobTek, Inc. www.globtek.com 186 Veterans Drive, Northvale, NJ 07647 Tel. (201) 784-1000 Fax (201) 784-0111	Drawing Title: USB 3.1 TYPE-C connector Female chassis connector 24P straight SMT		
	Model No. Connector		
	Part No./Ordering No. JACK-USBC-241SMTV-COVER-4BQC02		Rev A3

REVISION HISTORY

REV	DESCRIPTION	SUB	DATE	APPROVED
A3	Update Product description in the Drawing title	QA	07/31/2024	QA
A2	Update the box quantity information	QA	06/20/2024	QA
A1	Update Product description in the Drawing title	QA	06/07/2024	QA
A	Initial release	QA	08/08/2022	QA

3D CAD FILE:

<https://www.globtek.com/file/dl/jack-usbc-241smtv-cover-4bqc02.stp>

AGENCY ONLINE DOCUMENTS

RoHS/RoHS3 Declaration https://www.globtek.com/pdf/rohs_cert/01t3a000005hclxAAA

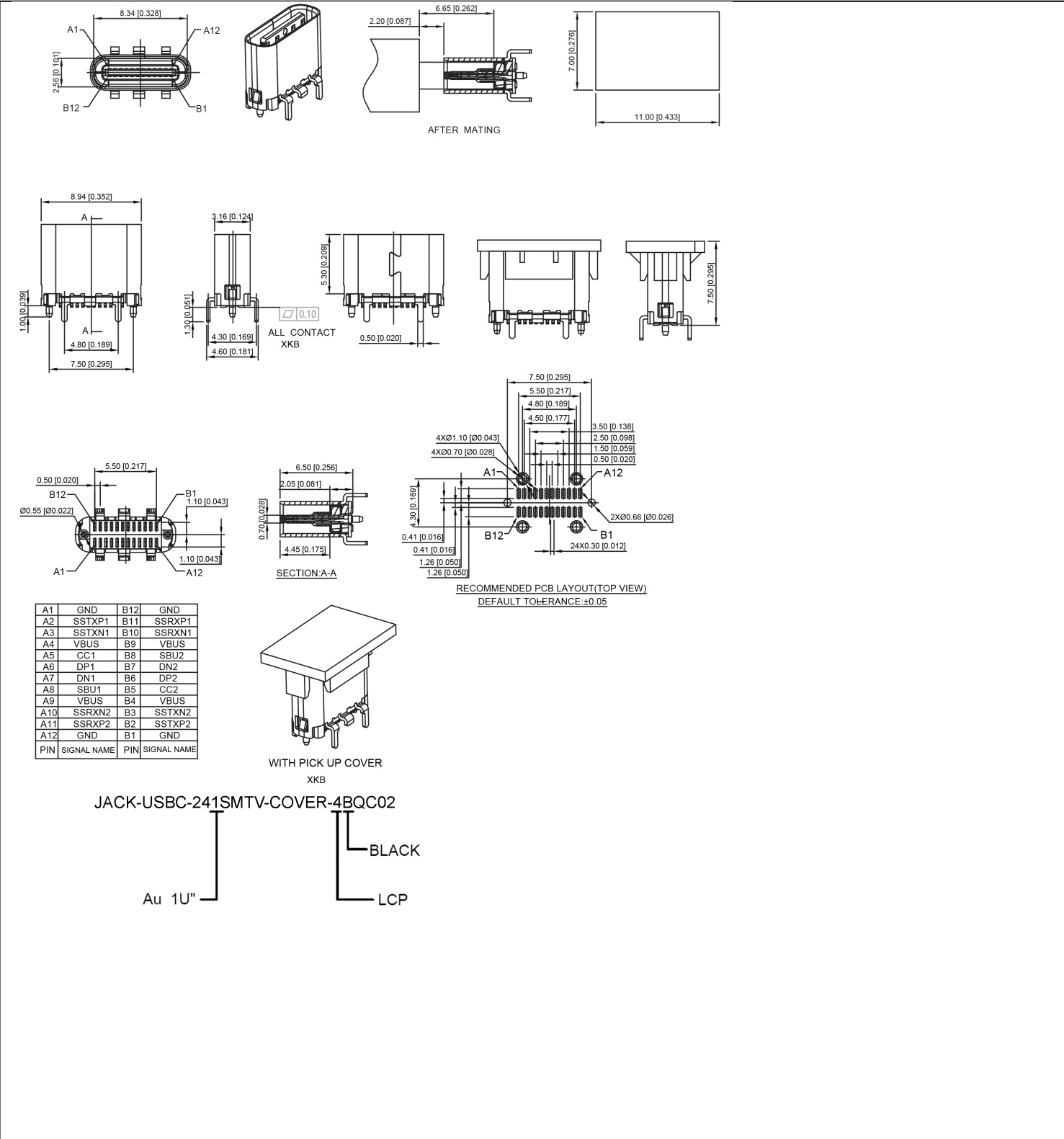
REACH Declaration <https://www.globtek.com/r2/eM2co8>

Conflict Minerals Declaration <https://www.globtek.com/r2/SNw6P3>

Prop 65 Statement <https://www.globtek.com/r2/VMPRnr>

IPXY rating is based on 3rd party testing and customers should check suitability and test system level IPXY rating before ordering.

GlobTek, Inc. www.globtek.com 186 Veterans Drive, Northvale, NJ 07647 Tel. (201) 784-1000 Fax (201) 784-0111	Drawing Title: USB 3.1 TYPE-C connector Female chassis connector 24P straight SMT Model No. Connector Part No./Ordering No. JACK-USBC-241SMTV-COVER-4BQC02	Rev A3
---	--	--------



GlobTek, Inc. www.globtek.com 186 Veterans Drive, Northvale, NJ 07647 Tel. (201) 784-1000 Fax (201) 784-0111	Drawing Title: USB 3.1 TYPE-C connector Female chassis connector 24P straight SMT	
	Model No. Connector	
	Part No./Ordering No. JACK-USBC-241SMTV-COVER-4BQC02	Rev A3

NOTES:

1.MATERIAL SPECIFICATION:

2.PLATING SPECIFICATION:

2-1.TERMINAL:

PLATING SPECIFICATIONS FOLLOW THE P/N

6.IR REFLOW:

THE PEAK TEMPERATURE ON THE BOARD SHALL

NOTE:

1.HOUSING:LCP,UL94 V-0.

4.FRONT SHELL: STAINLESS STEEL

2.TERMINAL: COPPER ALLOY

Ni 50u" MIN. UNDER PLATED OVER ALL.

Au PLATED ON THE FUNCTIONAL AREA OF CONTACT.

(GOLD PLATING THICKNESS FOLLOW THE P/N)

PLATING SPECIFICATIONS OF THE SOLDER AREA FOLLOW THE P/N

2-2.FRONT SHELL:

BE MAINTAINED FOR 10 SECONDS AT 260°C.

3.MECHANICAL PERFORMANCE,

3-1.INSERTION FORCE: 0.5~2.0kgf.

3-2.REMOVAL FORCE: 0.8kgf~2.0kgf.

3-3.DURABILITY: 10000 CYCLES.

4.ELECTRICAL PERFORMANCE,

4-3.INSULATION RESISTANCE: 100MΩ MIN

4-4.DIELECTRIC WITHSTAND VOLTAGE,AC 100V FOR 1 MINUTE.

CURRENT RATING:5 AMPS. FOR TOTAL VBUS/GND PINS;

4-2. LLCR:

VBUS & GND PINS AND OTHER PINS: 40mΩ/PIN MAX.

LLCR MAX. CHANGE OF ALL PINS: 10mΩ.

4-1. VOLTAGE RATING:5 V DC/AC (RMS. max)

SHIELD: 50mΩ/MAX.

OPERATING TEMPERATURE: -25°C~+85°C.

5. ENVIRONMENTAL PERFORMANCE:

3.MID PLATE: STAINLESS STEEL

5.EMI PLATE: STAINLESS STEEL

CLEAR ONLY

2-3.MID PLATE&EMI PLATE:

1.25AMPS FOR CC PIN,0.25 AMPS. FOR ALL OTHER CONTACT

Temperature Life, Vibration, Cyclic Temperature and Humidity, Thermal Shock, Mixed Flowing Gas and etc.:

<https://www.globtek.com/pdf/ENVIRONMENTAL.pdf>

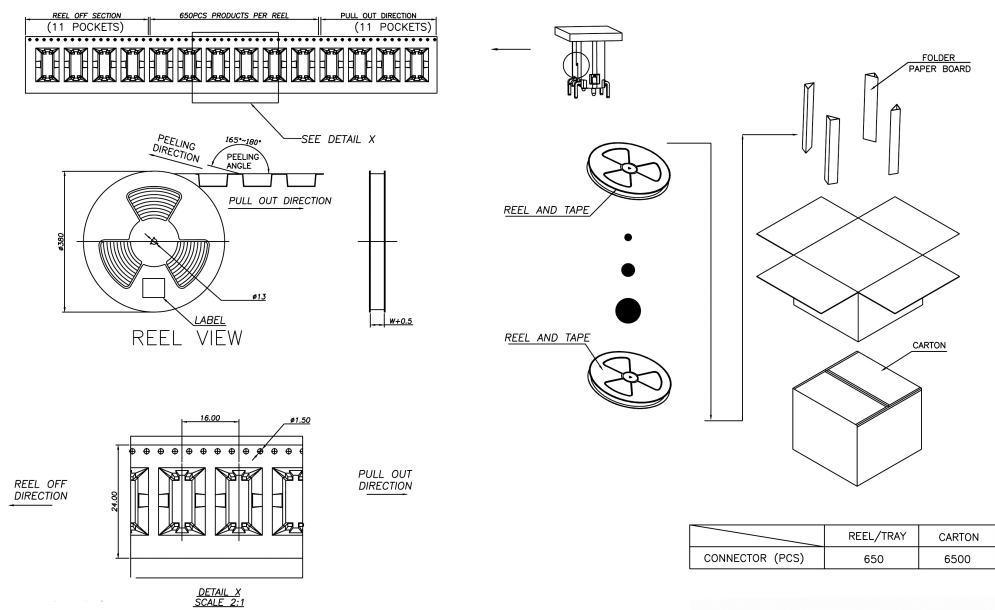
PROPRIETARY INFORMATION

PROPRIETARY OF GLOBTEK, INC. ANY REPRODUCTION, DISCLOSURE OR USE OF THIS DRAWING, IN WHOLE OR IN PART, IS HEREBY PROHIBITED EXCEPT AS SPECIFIED IN WRITING BY GLOBTEK, INC. © GlobTek, Inc. 2022 - 2024

quest /10/14/2024 1:02:36 PM CLONED FROM JACK-USBC-241SMTV-4BQC11-1

GlobTek, Inc. www.globtek.com 186 Veterans Drive, Northvale, NJ 07647 Tel. (201) 784-1000 Fax (201) 784-0111	Drawing Title: USB 3.1 TYPE-C connector Female chassis connector 24P straight SMT	
	Model No. Connector	Part No./Ordering No. JACK-USBC-241SMTV-COVER-4BQC02
		Rev A3

Packing:



GlobTek, Inc. www.globtek.com 186 Veterans Drive, Northvale, NJ 07647 Tel. (201) 784-1000 Fax (201) 784-0111	Drawing Title: USB 3.1 TYPE-C connector Female chassis connector 24P straight SMT	
	Model No. Connector	
	Part No./Ordering No. JACK-USBC-241SMTV-COVER-4BQC02	Rev A3

PACKAGING

Packing Spec P/N:	
Box Qty:	650
Gift Box Size (mm):	
Gift Box Color:	White
Master Carton Size (mm):	340 x 340 x 220
Master Carton Cubic Volume (m³): 0.03	
Master GW (Kg):	8.0 kg
wt Ea. (Kg):	0.01 kg
wt Ea. (Kg):	0.03 kg
LABEL SPECS: ,	
PACK SPEC:	