

| | | | | | |
|---|---|---|--|---|-------|
| GlobTek, Inc. www.globtek.com 186 Veterans Drive, Northvale, NJ 07647 Tel. (201) 784-1000 Fax (201) 784-0111 | <table> <tr> <td data-bbox="300 105 1331 178"> Drawing Title: DC POWER JACK, VERTICAL, mates to 5.5x2.1mm plugs Model No. Connector </td><td data-bbox="1331 105 1534 178"></td></tr> <tr> <td data-bbox="300 178 1331 302"> Part No./Ordering No. G-1005A-V </td><td data-bbox="1331 178 1534 302"> Rev B </td></tr> </table> | Drawing Title: DC POWER JACK, VERTICAL, mates to 5.5x2.1mm plugs Model No. Connector | | Part No./Ordering No. G-1005A-V | Rev B |
| Drawing Title: DC POWER JACK, VERTICAL, mates to 5.5x2.1mm plugs Model No. Connector | | | | | |
| Part No./Ordering No. G-1005A-V | Rev B | | | | |

In Addition to GlobTek Inc.'s renewed ISO9001:2008 - Quality Management System Certification, GlobTek Inc. is now certified to:

ISO13485:2003 - Medical Devices Quality Management System Certification

ISO14001:2004 - Environmental Management System Certification

ISO Certificates are available online at <http://www.globtek.com/iso-certificates/>

The acceptance of this specification and use of the product described in this document indicates the acceptance and binding of the customer to Globtek TERMS AND CONDITIONS (attached to the end of this document), which supersede all other agreements, terms, and conditions (<http://www.globtek.com/terms-and-conditions/>).

Prop 65 Statement:<https://www.globtek.com/prop-65-statement.pdf>

Footnote:

GlobTek Inc. will not be liable for the safety and performance of these power supplies if unauthorized access and repair occurs. End user should consult applicable UL, CSA or EN standards for proper installation instruction.

Limitation of Use:

GlobTek products are intended for use with commercial, medical, and/or industrial equipment only. GlobTek product are not authorized for use as mission critical components in life support hazardous environment, nuclear or aircraft applications without prior written approval from the CEO of GlobTek Inc.

Contents of this document are subject to change without prior notice.

Customer Approval of Specification:

Please approve, sign and send back to GlobTek so we can complete order processing.

A delay in receipt of this form will delay delivery schedule.

Company Name:

Customer P/N:

Quote Number:

Date:

Authorized Representative Name:

Authorized Representative Signature:

| | | | |
|---|--|--|-------|
| GlobTek, Inc. www.globtek.com 186 Veterans Drive, Northvale, NJ 07647 Tel. (201) 784-1000 Fax (201) 784-0111 | Drawing Title: DC POWER JACK, VERTICAL, mates to 5.5x2.1mm plugs | | |
| | Model No. Connector | | |
| | Part No./Ordering No. G-1005A-V | | Rev B |

REVISION HISTORY

| REV | DESCRIPTION | SUB | DATE | APPROVED |
|-----|---------------------------|-----|------------|----------|
| B | Update Mechanical drawing | QA | 05/02/2022 | QA |
| A | re-release | DR | 02/28/2022 | QA |

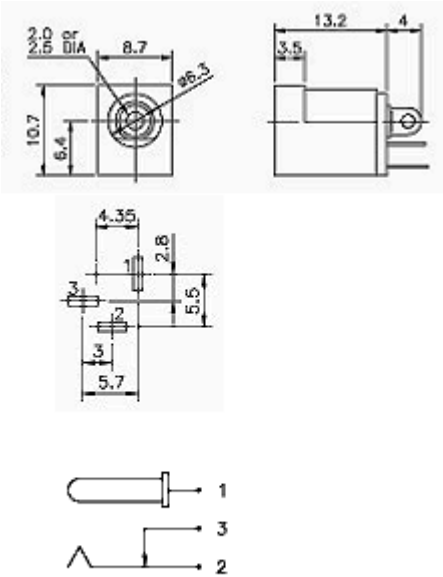
AGENCY ONLINE DOCUMENTS

| | |
|-------------------------------|---|
| RoHS/RoHS3 Declaration | https://www.globtek.com/pdf/rohs_cert/01t30000002p8nuAAA |
| REACH Declaration | https://www.globtek.com/pdf/iso_certificates/REACH.pdf |
| Conflict Minerals Declaration | https://www.globtek.com/pdf/conflict-minerals.pdf |
| Prop 65 Statement | https://en.globtek.com/prop-65-statement.pdf |

IPXY rating is based on 3rd party testing and customers should check suitability and test system level IPXY rating before ordering.
DC POWER JACK, VERTICAL, mates to 5.5x2.1mm plugs

Specifications
Rating 2A, 16 VDC
Withstanding voltage AC 500V, 60 Hz for 1 min.
Insulation resistance 100M Ohm (min.) at 500V DC
Contact resistance 30m Ohm Max at AC 100mA 1 KHz

Mechanical Drawing:



| | | |
|---|--|-------|
| GlobTek, Inc. www.globtek.com 186 Veterans Drive, Northvale, NJ 07647 Tel. (201) 784-1000 Fax (201) 784-0111 | Drawing Title: DC POWER JACK, VERTICAL, mates to 5.5x2.1mm plugs | |
| | Model No. Connector | |
| | Part No./Ordering No. G-1005A-V | Rev B |

PACKAGING

| | |
|---------------------------------------|-------|
| Packing Spec P/N: | |
| Box Qty: | 1 |
| Gift Box Size (mm): | |
| Gift Box Color: | White |
| Master Carton Size (mm): | TBD |
| Master Carton Cubic Volume (m³): 0.00 | |
| Master GW (Kg): | kg |
| wt Ea. (Kg): | kg |
| wt Ea. (Kg): | kg |
| LABEL SPECS: , | |
| PACK SPEC: | |