

GlobTek, Inc. www.globtek.com 186 Veterans Drive, Northvale, NJ 07647 Tel. (201) 784-1000 Fax (201) 784-0111	Drawing Title: USB Key A 20-pin shielded header aka USB-E (USB TYPE-E) USB 3.2 Gen 2 (USB 3.1 Gen 2, Superspeed + (USB 3.1)) Internal wiring connector, Receptacle Connector 20 Position Surface Mount, Vertical; Through Hole	
	Model No. Connector	
	Part No./Ordering No. JACK-USBE-20PINTL	Rev A

In Addition to GlobTek Inc.'s renewed ISO9001:2008 - Quality Management System Certification, GlobTek Inc. is now certified to:

ISO13485:2003 - Medical Devices Quality Management System Certification

ISO14001:2004 - Environmental Management System Certification

ISO Certificates are available online at <http://www.globtek.com/iso-certificates/>

The acceptance of this specification and use of the product described in this document indicates the acceptance and binding of the customer to Globtek TERMS AND CONDITIONS (attached to the end of this document), which supersede all other agreements, terms, and conditions (<http://www.globtek.com/terms-and-conditions/>).

Prop 65 Statement:<https://www.globtek.com/prop-65-statement.pdf>

Footnote:

GlobTek Inc. will not be liable for the safety and performance of these power supplies if unauthorized access and repair occurs. End user should consult applicable UL, CSA or EN standards for proper installation instruction.

Limitation of Use:

GlobTek products are intended for use with commercial, medical, and/or industrial equipment only. GlobTek product are not authorized for use as mission critical components in life support hazardous environment, nuclear or aircraft applications without prior written approval from the CEO of GlobTek Inc.

Contents of this document are subject to change without prior notice.

Customer Approval of Specification:

Please approve, sign and send back to GlobTek so we can complete order processing.

A delay in receipt of this form will delay delivery schedule.

Company Name:

Customer P/N:

Quote Number:

Date:

Authorized Representative Name:

Authorized Representative Signature:

GlobTek, Inc. www.globtek.com 186 Veterans Drive, Northvale, NJ 07647 Tel. (201) 784-1000 Fax (201) 784-0111	Drawing Title: USB Key A 20-pin shielded header aka USB-E (USB TYPE-E) USB 3.2 Gen 2 (USB 3.1 Gen 2, Superspeed + (USB 3.1)) Internal wiring connector, Receptacle Connector 20 Position Surface Mount, Vertical; Through Hole		
	Model No. Connector		
	Part No./Ordering No. JACK-USBE-20PINTL		Rev A

REVISION HISTORY

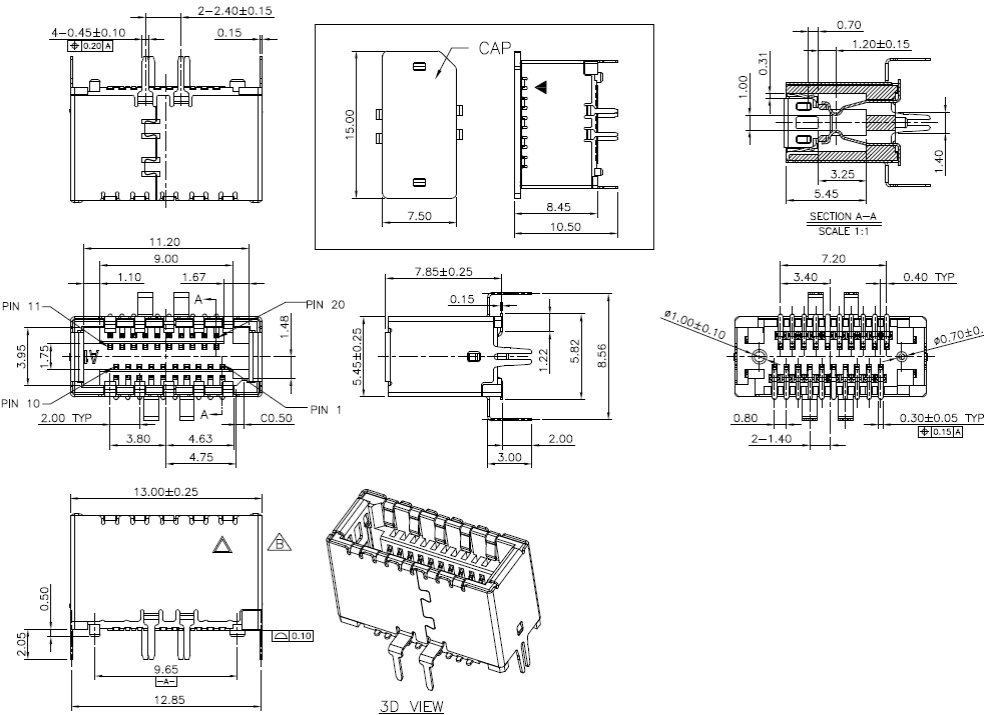
REV	DESCRIPTION	SUB	DATE	APPROVED
A	Initial release	DR	02/19/2023	DAVID

AGENCY ONLINE DOCUMENTS

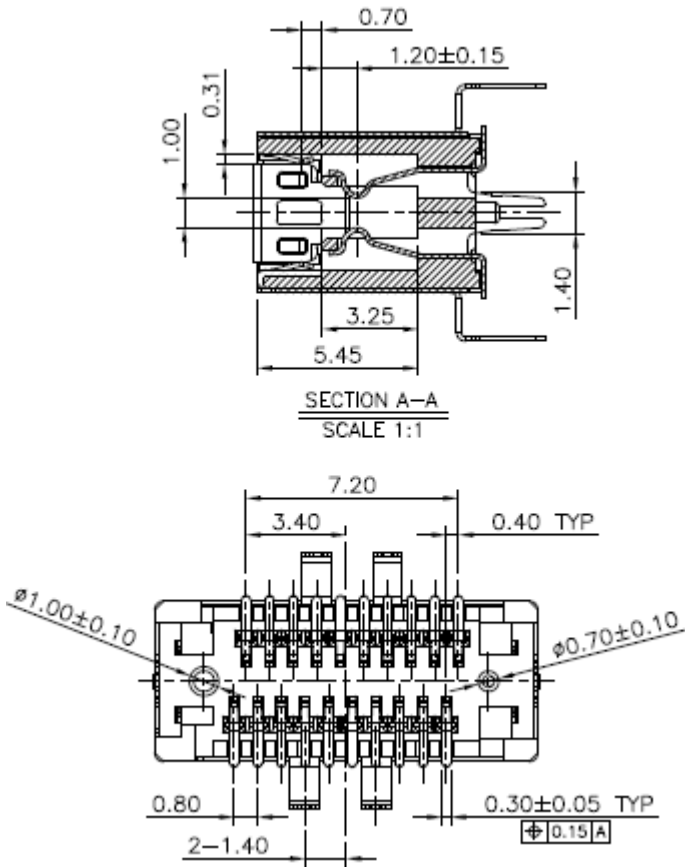
RoHS/RoHS3 Declaration	https://www.globtek.com/pdf/rohs_cert/01t3a000005hB6XAAU
REACH Declaration	https://www.globtek.com/r2/eM2co8
Conflict Minerals Declaration	https://www.globtek.com/r2/SNw6P3
Prop 65 Statement	https://www.globtek.com/r2/VMPRnr

IPXY rating is based on 3rd party testing and customers should check suitability and test system level IPXY rating before ordering.
USB Key A 20-pin shielded header PCB mounted receptacle/Jack.

Mechanical Drawing



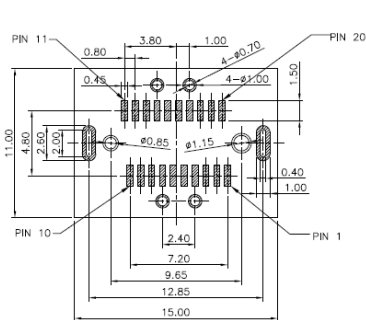
GlobTek, Inc. www.globtek.com 186 Veterans Drive, Northvale, NJ 07647 Tel. (201) 784-1000 Fax (201) 784-0111	Drawing Title: USB Key A 20-pin shielded header aka USB-E (USB TYPE-E) USB 3.2 Gen 2 (USB 3.1 Gen 2, Superspeed + (USB 3.1)) Internal wiring connector, Receptacle Connector 20 Position Surface Mount, Vertical; Through Hole	
	Model No. Connector	
	Part No./Ordering No. JACK-USBE-20PINTL	Rev A



Mates With
Product part number: PLUG-USBE-20PINBM
Datasheet: <https://globtek.secure.force.com/spec/pdf/2512947/U5M2930750>

Product part number: PLUG-USBE-20PINST
Datasheet: <https://globtek.secure.force.com/spec/pdf/2512946/U5M2930749>

Wiring Instructions



Pin Map to support one Type-C port

P11	P12	P13	P14	P15	P16	P17	P18	P19	P20
VBUS	TX2+	TX2-	GND	RX2+	RX2-	GND	D-	D+	CC2
SBU2	SBU1	CC1	VBUS	RX1-	RX1+	GND	TX1-	TX1+	VBUS
P10	P09	P08	P07	P06	P05	P04	P03	P02	P01

Pin Map to support two Standard-A ports

P11	P12	P13	P14	P15	P16	P17	P18	P19	P20
VBUS			GND			GND	D-	D+	
			VBUS	RX1-	RX1+	GND	TX1-	TX1+	VBUS
P10	P09	P08	P07	P06	P05	P04	P03	P02	P01

GlobTek, Inc. www.globtek.com 186 Veterans Drive, Northvale, NJ 07647 Tel. (201) 784-1000 Fax (201) 784-0111	Drawing Title: USB Key A 20-pin shielded header aka USB-E (USB TYPE-E) USB 3.2 Gen 2 (USB 3.1 Gen 2, Superspeed + (USB 3.1)) Internal wiring connector, Receptacle Connector 20 Position Surface Mount, Vertical; Through Hole	
	Model No. Connector	
	Part No./Ordering No. JACK-USBE-20PINTL	Rev A

IF EMI SHELL SOLDER LEAD IS CONNECTED TO THE ADJACDAT GND PIN VIA TRACE, IT MUST BE ISOLATED BY SOLDER RESIST

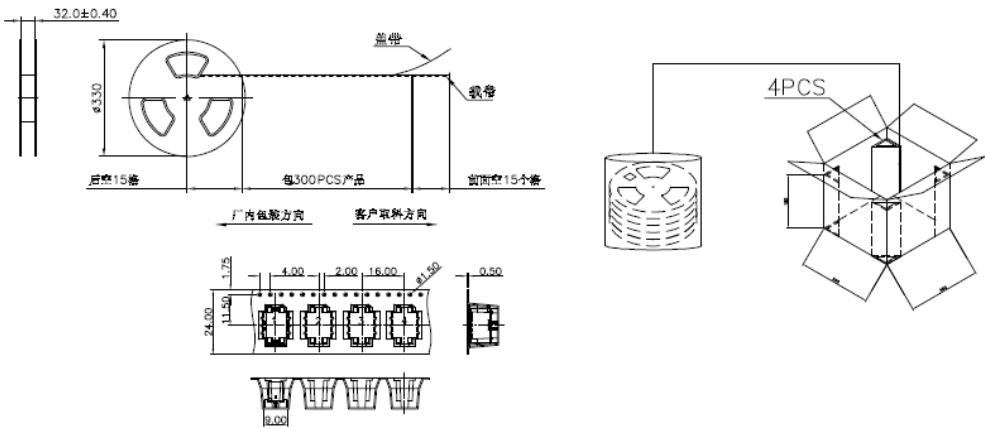
GlobTek, Inc. www.globtek.com 186 Veterans Drive, Northvale, NJ 07647 Tel. (201) 784-1000 Fax (201) 784-0111	Drawing Title: USB Key A 20-pin shielded header aka USB-E (USB TYPE-E) USB 3.2 Gen 2 (USB 3.1 Gen 2, Superspeed + (USB 3.1)) Internal wiring connector, Receptacle Connector 20 Position Surface Mount, Vertical; Through Hole	
	Model No. Connector	
	Part No./Ordering No. JACK-USBE-20PINTL	Rev A

SPECIFICATION:

CURRENT RATING: 3.0A MAX.

- 1. VOLTAGE: 100VAC
- 2. TEMPERATURE RANGE: -30°C – 85°C
- 3. CONTACT RESISTANCE: 50 MILLIONHM MAX
- 4. INSULATION RESISTANCE : 1000 MEGOHMS MIN.
- 5. INSERTION FORCE: 35N max
- 6. UNMATING FORCE: 15N min
- 7. DURABILITY: 50 CYCLES
- 8. [Complies with USB 3.1](#)

PACKAGING



REEL MATERIAL: PET
TAP MATERIAL: PET
TOLERANCE +/-0.08MM
QUANTITY/REEL: 300 PCS
QUANTITY/INNER CARTON: 1800 PCS
15 EMPTY POSITIONS IN THE FRONT AND END OF CARRIER

MASTER CARTON, 6 REELS, 340X340X180MM

GlobTek, Inc. www.globtek.com 186 Veterans Drive, Northvale, NJ 07647 Tel. (201) 784-1000 Fax (201) 784-0111	Drawing Title: USB Key A 20-pin shielded header aka USB-E (USB TYPE-E) USB 3.2 Gen 2 (USB 3.1 Gen 2, Superspeed + (USB 3.1)) Internal wiring connector, Receptacle Connector 20 Position Surface Mount, Vertical; Through Hole	
	Model No. Connector	
	Part No./Ordering No. JACK-USBE-20PINTL	Rev A

PACKAGING

Packing Spec P/N:	
Box Qty:	300
Gift Box Size (mm):	
Gift Box Color:	White
Master Carton Size (mm):	180 x 340 x 340
Master Carton Cubic Volume (m³): 0.02	
Master GW (Kg):	kg
wt Ea. (Kg):	kg
wt Ea. (Kg):	kg
LABEL SPECS: ,	
PACK SPEC:	