

| | | | |
|---|--|--|-------|
| GlobTek, Inc. www.globtek.com 186 Veterans Drive, Northvale, NJ 07647 Tel. (201) 784-1000 Fax (201) 784-0111 | Drawing Title: 5.5*2.5mm female barrel plug with wings for locking Model No. Connector Part No./Ordering No. 451-02180162(R) | | Rev A |
|---|--|--|-------|

In Addition to GlobTek Inc.'s renewed ISO9001:2008 - Quality Management System Certification, GlobTek Inc. is now certified to:

ISO13485:2003 - Medical Devices Quality Management System Certification

ISO14001:2004 - Environmental Management System Certification

ISO Certificates are available online at <http://www.globtek.com/iso-certificates/>

The acceptance of this specification and use of the product described in this document indicates the acceptance and binding of the customer to Globtek TERMS AND CONDITIONS (attached to the end of this document), which supersede all other agreements, terms, and conditions (<http://www.globtek.com/terms-and-conditions/>).

Prop 65 Statement:<https://www.globtek.com/prop-65-statement.pdf>

Footnote:

GlobTek Inc. will not be liable for the safety and performance of these power supplies if unauthorized access and repair occurs. End user should consult applicable UL, CSA or EN standards for proper installation instruction.

Limitation of Use:

GlobTek products are intended for use with commercial, medical, and/or industrial equipment only. GlobTek product are not authorized for use as mission critical components in life support hazardous environment, nuclear or aircraft applications without prior written approval from the CEO of GlobTek Inc.

Contents of this document are subject to change without prior notice.

Customer Approval of Specification:

Please approve, sign and send back to GlobTek so we can complete order processing.

A delay in receipt of this form will delay delivery schedule.

Company Name:

Customer P/N:

Quote Number:

Date:

Authorized Representative Name:

Authorized Representative Signature:

| | | | |
|---|--|--|-------|
| GlobTek, Inc. www.globtek.com 186 Veterans Drive, Northvale, NJ 07647 Tel. (201) 784-1000 Fax (201) 784-0111 | Drawing Title: 5.5*2.5mm female barrel plug with wings for locking | | |
| | Model No. Connector | | |
| | Part No./Ordering No. 451-02180162(R) | | Rev A |

REVISION HISTORY

| REV | DESCRIPTION | SUB | DATE | APPROVED |
|-----|-----------------|-----|------------|----------|
| A | Initial release | QA | 08/04/2023 | QA |

AGENCY ONLINE DOCUMENTS

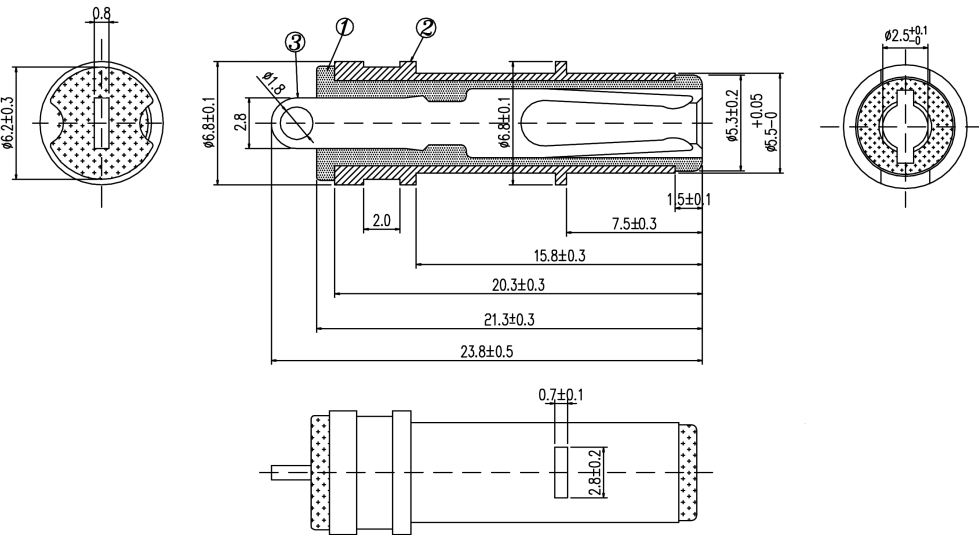
RoHS/RoHS3 Declaration https://www.globtek.com/pdf/rohs_cert/01t0c000008pKhxAEE

REACH Declaration https://www.globtek.com/pdf/iso_certificates/REACH.pdf

Conflict Minerals Declaration <https://www.globtek.com/pdf/conflict-minerals.pdf>

Prop 65 Statement <https://en.globtek.com/prop-65-statement.pdf>

IPXY rating is based on 3rd party testing and customers should check suitability and test system level IPXY rating before ordering.



| | MATERIAL | PLATING |
|----------------|-----------------------|--------------------------|
| Plastic | PBT | |
| Metal case | Phosphor bronze/brass | Nickel plating above 2UM |
| Center contact | Phosphor bronze/brass | Nickel plating above 2UM |

SPECIFICATIONS

| parameter | conditions/description | min | typ | max | units |
|-----------------------|---------------------------------|------|-----|-----|-------|
| rated input voltage | | | 12 | | Vdc |
| rated input current | | | | 3 | A |
| contact resistance | | | | 30 | mΩ |
| insulation resistance | at 500Vdc | 1000 | | | MΩ |
| voltage withstand | at 50/60Hz for 1 minute 500 Vac | | | 500 | Vac |
| operating temperature | at 85% RH max | -30 | | 180 | °C |

| | | |
|---|--|-------|
| GlobTek, Inc. www.globtek.com 186 Veterans Drive, Northvale, NJ 07647 Tel. (201) 784-1000 Fax (201) 784-0111 | Drawing Title: 5.5*2.5mm female barrel plug with wings for locking | |
| | Model No. Connector | |
| | Part No./Ordering No. 451-02180162(R) | Rev A |

PACKAGING

| | |
|---------------------------------------|-------|
| Packing Spec P/N: | |
| Box Qty: | 1 |
| Gift Box Size (mm): | |
| Gift Box Color: | White |
| Master Carton Size (mm): | TBD |
| Master Carton Cubic Volume (m³): 0.00 | |
| Master GW (Kg): | kg |
| wt Ea. (Kg): | kg |
| wt Ea. (Kg): | kg |
| LABEL SPECS: Standard GT,L-1186 | |
| PACK SPEC: | |