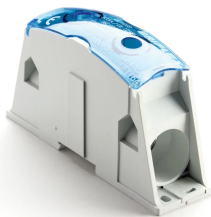


## SPLICE BLOCK, CABLE-CABLE, 335 A UL, ALUMINUM

### CATALOG NUMBER

**SB400AL**



nVent ERIFLEX Power Blocks are the main DIN mounted output/input devices for connection between primary and secondary switchboard, or main input/output connection for machine or industrial equipment (such as inverter, air conditioning machines, etc.). The high short circuit rated large cross section blocks offer time savings and reliability in every panel configuration. The complete Power Blocks range offers multiple connection types with up to four cables, nVent ERIFLEX Flexibar Advanced, or IBSB Advanced power braids.

### CERTIFICATIONS



### FEATURES

Can be connected with round cross section cable or flat connection system like nVent ERIFLEX Flexibar Advanced or IBSB Advanced Insulated Braided Conductor

Compact power block with high short circuit current rating

Tinned copper or aluminum block allows for copper or aluminum conductor direct connections, or using ferrule

Screw retaining cover is hinged and removable

Design allows for visual inspection of conductor and confirmation of connection

Modular snap-together blocks for building multi-pole power blocks

Easily clips onto DIN rail or mounts to panel with screws

Voltage detection and measurement connection

95% fill ratio

RoHS compliant

Conforms to EN 45545 obtaining an HL3 classification for chapter R23 and HL2 classification for chapter R22

Halogen free plastic housing excluding the blue protection cover

### PRODUCT ATTRIBUTES

Article Number: 561164

Finish: Tinned

Type: Cable-Cable

Typical Application Current Rating, UL: 335 A

Material: Aluminum;Thermoplastic
Line Side Max Conductor Size, UL: 400 kcmil
Load Side Max Conductor Size, UL: 400 kcmil
Short Term Withstand Current (Icw) 1s: 28.8kA
Max Current Rating, IEC: 610A
Max Current Rating, UL/CSA: 335A
Peak Short Circuit Current (Ipk): 51kA
Rated Conditional Short-Circuit Current (Icc): 24.3kA
Short Circuit Current Rating (SCCR): 100kA
Max Working Voltage, IEC (Ui): 1000;1500
Max Working Voltage, UL (Vin): 1250
Line Side Number of Connections: 1
Line Side Compact Stranded Wire Size: 95 - 240 mm <sup>2</sup> ;3/0 - 400 kcmil
Load Side Compact Stranded Wire Size: 95 - 240 mm <sup>2</sup> ;3/0 - 400 kcmil
Load Side Number of Connections: 1
Load Side Stranded Wire Size - Ferrule: 95 - 240 mm <sup>2</sup>
Depth (D): 3.23"
Height (H): 5.76"
Width (W): 1.63"
Unit Weight: 0.55 lb
Certification Details: UL® 1059
Complies With: IEC® 60947-7-1
Enclosure Rating: IP 20
Flammability Rating: UL® 94V-0

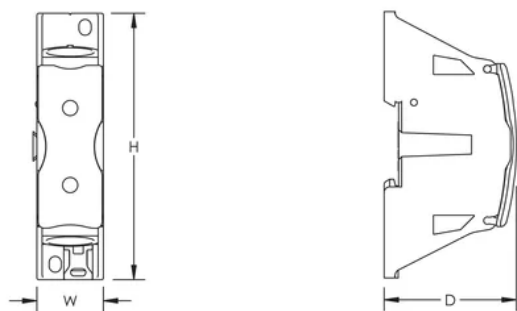
### ADDITIONAL PRODUCT DETAILS

SBF250 is UL® 1953 Listed when used with SB250SPCR. Max Working Voltage for UL 1953 applications is 1250 VAC/DC.

Blue protection cover is less than 7% of the overall product weight.

Design Guideline for Distribution Blocks, Power Blocks and Power Terminals										
Derating according to Ambient* Temperature (°F) to maintain working temperature of 185°F										
Ambient Temperature (°F)	86°	95°	104°	113°	122°	131°	140°	149°	158°	167°
Derating Coefficient (d)	1	1	1	0.94	0.88	0.82	0.75	0.67	0.58	0.47
*environment around the terminal blocks inside the enclosure										

DIAGRAMS



WARNING

nVent products shall be installed and used only as indicated in nVent's product instruction sheets and training materials. Instruction sheets are available at [www.nvent.com](http://www.nvent.com) and from your nVent customer service representative. Improper installation, misuse, misapplication or other failure to completely follow nVent's instructions and warnings may cause product malfunction, property damage, serious bodily injury and death and/or void your warranty.

**North America**  
+1.800.753.9221  
Option 1 – Customer Care  
Option 2 – Technical Support

**Europe**  
Netherlands:  
+31 800-0200135  
France:  
+33 800 901 793

**Europe**  
Germany:  
800 1890272  
Other Countries:  
+31 13 5835404

**APAC**  
Shanghai:  
+ 86 21 2412 1618/19  
Sydney:  
+61 2 9751 8500



Our powerful portfolio of brands:  
**nVent.com CADDY ERICO HOFFMAN RAYCHEM SCHROFF**  
**TRACER**