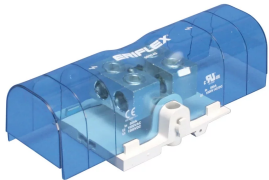


## POWER TERMINAL, TUNNEL-TO-TUNNEL, 500 A

### CATALOG NUMBER

**SBTT-500**



### CERTIFICATIONS



### FEATURES

Tinned copper block allows for copper or aluminum conductor connections

Accessible tunnels allow for easy connection of wire

Design allows for visual inspection of conductor and confirmation of connection

Voltage detection and measurement connection

Adjustable transparent cover

Modular snap-together blocks for building multi-pole power blocks

Easily clips onto DIN rail or mounts to panel with screws

SBLEC Power Terminals Fixing Accessory required for direct panel mount

RoHS compliant

Halogen free

### PRODUCT ATTRIBUTES

Article Number: 561145

Material: Copper;Thermoplastic

Finish: Tinned

Max Current Rating, IEC: 750A

Max Current Rating, UL/CSA: 500A

Short Term Withstand Current (Icw) 1s: 28.8kA

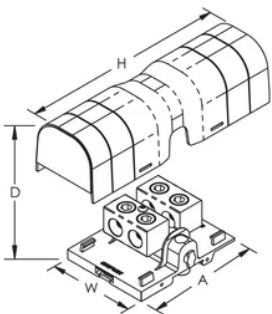
Peak Short Circuit Current (Ipk): 52kA
Short Circuit Current Rating (SCCR): 100kA
Max Working Voltage, IEC (Ui): 1000;1500
Max Working Voltage, UL (Vin): 1000
Number of Tunnel Connections: 4
Tunnel Connection Compact Stranded Wire Size: (4) 16 – 120 mm²
Tunnel Connection Wire Size - Ferrule: (4) 16 – 120 mm²
Tunnel Connection Wire Size: (4) #6 – 250 kcmil
Depth (D): 2.6"
Height (H): 8.1"
Width (W): 3.35"
A: 4 1/4"
Unit Weight: 1.32 lb
Certification Details: UL® 1059
Flammability Rating: UL® 94V-1
Complies With: IEC® 60947-7-1

ADDITIONAL PRODUCT DETAILS

Power terminal connections are interchangeable and can be used as line side or load side connections.

Design Guideline for Distribution Blocks, Power Blocks and Power Terminals										
Derating according to Ambient* Temperature (°F) to maintain working temperature of 185°F										
Ambient Temperature (°F)	86°	95°	104°	113°	122°	131°	140°	149°	158°	167°
Derating Coefficient (d)	1	1	1	0.94	0.88	0.82	0.75	0.67	0.58	0.47
*environment around the terminal blocks inside the enclosure										

DIAGRAMS



WARNING

nVent products shall be installed and used only as indicated in nVent's product instruction sheets and training materials. Instruction sheets are available at [www.nvent.com](http://www.nvent.com) and from your nVent customer service representative. Improper installation, misuse, misapplication or other failure to completely follow nVent's instructions and warnings may cause product malfunction, property damage, serious bodily injury and death and/or void your warranty.

**North America**

+1.800.753.9221

Option 1 – Customer Care

Option 2 – Technical Support

**Europe**

Netherlands:

+31 800-0200135

France:

+33 800 901 793

**Europe**

Germany:

800 1890272

Other Countries:

+31 13 5835404

**APAC**

Shanghai:

+ 86 21 2412 1618/19

Sydney:

+61 2 9751 8500



nVent.com

Our powerful portfolio of brands:

**CADDY ERICO HOFFMAN RAYCHEM SCHROFF**

**TRACER**