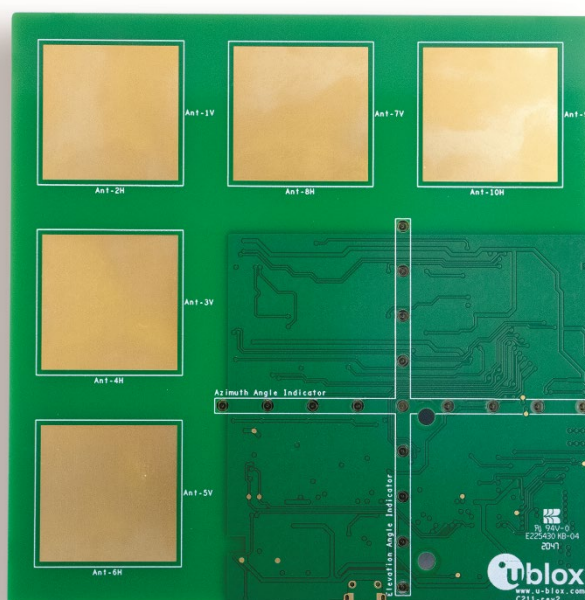


# XPLR-AOA-1 and XPLR-AOA-2 explorer kits

Bluetooth direction finding

User guide



## Abstract

This document describes the XPLR-AOA explorer kits for evaluating Bluetooth 5.1 direction finding and indoor positioning use cases using Angle-of-Arrival methodology. It serves as a practical guide that explains how the u-blox modules and software included in the kit are used to explore direction-finding tags and anchor nodes. The kit contents, setup, configuration, and operation are described.

# Document information

Title	XPLR-AOA-1 and XPLR-AOA-2 explorer kits	
Subtitle	Bluetooth direction finding	
Document type	User guide	
Document number	UBX-21004616	
Revision and date	R13	2-Feb-2024
Disclosure restriction	C1 - Public	

This document applies to the following products:

Product name
NINA-B4
XPLR-AOA-1
XPLR-AOA-2



u-connectLocate is renamed to u-locateEmbed

u-blox or third parties may hold intellectual property rights in the products, names, logos, and designs included in this document. Copying, reproduction, or modification of this document or any part thereof is only permitted with the express written permission of u-blox. Disclosure to third parties is permitted for clearly public documents only.

The information contained herein is provided “as is” and u-blox assumes no liability for its use. No warranty, either express or implied, is given, including but not limited to, with respect to the accuracy, correctness, reliability, and fitness for a particular purpose of the information. This document may be revised by u-blox at any time without notice. For the most recent documents, visit [www.u-blox.com](http://www.u-blox.com).

Copyright © u-blox AG.

# Contents

<b>Document information</b>	<b>2</b>
<b>Contents</b>	<b>3</b>
<b>1 Product description</b>	<b>4</b>
1.1 Kit includes	5
1.2 Evaluation software	5
1.3 System requirements	5
<b>2 Quick start guide</b>	<b>6</b>
2.1 C211 anchor setup	6
2.2 C209 tag setup	6
2.3 Wireless anchor-to-host setup	6
<b>3 Bluetooth direction finding</b>	<b>7</b>
3.1 Technology	7
3.1.1 Angle of Arrival (AoA)	7
3.1.2 Angle of Departure (AoD)	8
3.1.3 Angles of measurement	8
<b>4 XPLR-AOA anchor nodes and tags</b>	<b>9</b>
4.1 Introduction	9
4.2 Overview	9
4.3 C211 anchor nodes	10
4.3.1 Overview	10
4.3.2 Connectors	11
4.3.3 Flashing u-locateEmbed	14
4.3.4 Configuring the board	15
4.4 C209 tags	16
4.4.1 Overview	16
4.4.2 Software and flashing	17
<b>5 System setup</b>	<b>20</b>
5.1 Anchor node configuration	20
5.2 Tag configuration	20
5.2.1 Configuring advertising interval	20
5.2.2 Enabling/disabling advertising	21
5.3 Restore Eddystone Instance ID	21
<b>6 Running system</b>	<b>22</b>
<b>Appendix</b>	<b>24</b>
<b>A Glossary</b>	<b>24</b>
<b>B Limitations</b>	<b>24</b>
<b>C Definition of output angles</b>	<b>25</b>
<b>D C209 schematics</b>	<b>26</b>
<b>Related documentation</b>	<b>27</b>
<b>Revision history</b>	<b>28</b>
<b>Contact</b>	<b>28</b>


# 1 Product description

A Bluetooth "tag" is a small, thin device that can be attached to any object to track its whereabouts. An "anchor node" calculates the position of the tag. Bluetooth tags can attach to keys, wallets, purses, and other personal property.

u-blox direction finding solutions that leverage this [Bluetooth direction finding](#) technology can be evaluated using two separate explorer kits, as described in [Table 1](#).

Model	Ordering code	Description
XPLR-AOA-1	XPLR-AOA-1	<p>Bluetooth 5.1 direction finding explorer kit for evaluating Bluetooth 5.1 direction finding using Angle-of-Arrival methodology. The kit includes a single C211 application board and one C209 tag:</p> <ul style="list-style-type: none"> <li>C211 application boards include a NINA-B411 module and an antenna array that represents the anchor node for direction finding, using Angle-of-Arrival methodology. u-locateEmbed direction finding software installed on NINA-B411 delivers angle information for tracked tags to a listening host.</li> <li>C209 tags are based on the open CPU NINA-B406 module variant. The tags run on custom tag software that advertise Eddystone beacons with appended with Constant Tone Extensions (CTE). The CTE data is used by C211 application board to calculate the position of the C209 tag.</li> </ul>
XPLR-AOA-2	XPLR-AOA-2	<p>Bluetooth 5.1 direction finding explorer kit for evaluating and developing indoor positioning use cases, using Angle-of-Arrival methodology. The kit includes a four C211 application boards, four C209 tags and positioning engine client software:</p> <ul style="list-style-type: none"> <li>C211 application boards include a NINA-B411 module and an antenna array that represents the anchor node for direction finding using Angle-of-Arrival methodology. u-locateEmbed direction finding software installed on NINA-B411 delivers angle information for tracked tags to a listening host.</li> <li>C209 tags are based on the open CPU NINA-B406 module variant. The tags run on custom tag software that advertise Eddystone beacons with appended with Constant Tone Extensions (CTE). The CTE data is used by C211 application board to calculate the position of the C209 tag.</li> </ul>

Table 1: u-blox direction-finding explorer kits and ordering codes

 For further information about the positioning engine client software for Windows, see also the indoor positioning guide [\[2\]](#).

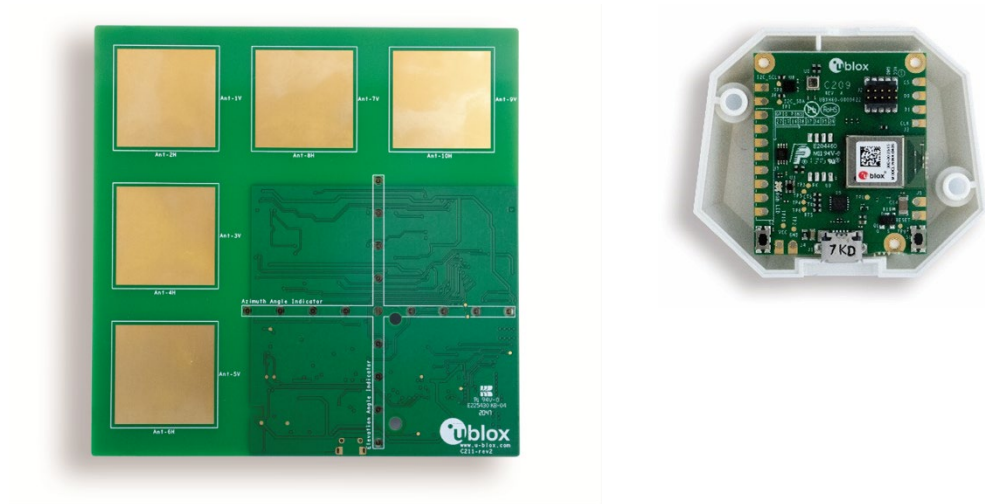


Figure 1: u-blox direction-finding explorer kits comprising C211 application board(s) and C209 tag(s)

## 1.1 Kit includes

XPLR-AOA-1 direction finding explorer kit for out-of-the-box AoA evaluation includes:

- C211 antenna board with NINA-B411 Bluetooth LE module
- C209 tag with NINA-B406 Bluetooth LE module
- u-locateEmbed direction finding software (from u-blox.com)
- C209 tag software example (from GitHub)

XPLR-AOA-2 indoor positioning explorer kit for out-of-the-box evaluation of indoor positioning includes:

- Four C211 antenna boards with NINA-B411 module
- Four C209 tags with NINA-B406 module
- u-locateEmbed direction finding software (from u-blox.com)
- C209 tag software example (from GitHub)
- Positioning engine software example to run on a PC



The C211 antenna board included in the initial versions of the XPLR-AOA-1 and XPLR-AOA-2 hardware kits featured a LED array that indicated the direction towards the C209 tag. Due to constraints in component availability, later versions of these kits are built without this LED array. This component is not essential for using the kits as they were originally intended.

## 1.2 Evaluation software

Several evaluation packages are available:

- u-locateEmbed delivers angle information for tracked tags to a listening host. Customers install u-locateEmbed software on the NINA B411 module mounted on the C211 antenna board. The boards are delivered with bootloader software only.
- s-center software Bluetooth and Wi-Fi evaluation software provides a powerful and easy-to-use tool for evaluating, configuring, and testing u-blox short range modules.
- Sample positioning-engine client that runs on a local Windows workstation (XPLR-AOA-2 only)

## 1.3 System requirements

- PC with USB interface
- Operating system: Windows 7 onwards, Linux, or Mac OS

## 2 Quick start guide

Use this to set up the C211 anchor and C209 tags included in the XPLR-AOA kits.

### 2.1 C211 anchor setup

To set up the C211 anchor boards:

1. Connect the anchor to your computer using a USB-A to Micro-B cable. Drivers for the onboard FTDI USB-to-UART converter are normally installed automatically, but otherwise download and install these directly from the FTDI website [21]. The serial port is visible in the device manager when it is successfully installed.
2. Flash the u-locateEmbed software using the bundled (Windows only) `newtmgr` executable or s-center [7]. Alternatively, use the Newt Manager Guide [10] to install the `newtmgr` application tool for MAC OS, Linux, and Windows. See also [Flashing](#).
3. Start a terminal emulator (Tera Term or similar) and open the port with the settings described in [Configuring the board](#).
4. Restart the board using the Reset button. A `+STARTUP` event is shown in your terminal emulator when the board is ready to accept AT commands and deliver direction finding angle calculation events. See also [Running system](#).

### 2.2 C209 tag setup

To set up the C209 tags:

1. Connect the anchor to your computer using a USB-A to Micro-B cable. Drivers for the onboard FTDI USB-to-UART converter are normally installed automatically, but otherwise download and install these directly from the FTDI website [21]. The serial port is visible in the device manager when it is successfully installed.
2. Flash the C209 tag software available from the C209 GitHub repo [14] using command line tools or s-center [7], as described in [Software and flashing](#). After the tag is flashed, the LED on the C209 tag blinks blue rapidly to show that the tag is now sending direction-finding enabled advertisements. You should now see angle calculation events over the UART interface on the C211.
3. You can now switch to power the C209 tag using a CR2032 battery (not included).

### 2.3 Wireless anchor-to-host setup

To set up wireless communication from the C211 anchor to a host, see [EVK-ODIN-W2 wireless gateway configuration](#). The setup requires one EVK-ODIN-W2 per C211 anchor node.

## 3 Bluetooth direction finding

Bluetooth direction finding provides a relatively inexpensive and flexible approach to developing location-related applications for both in indoor and outdoor environments.

Examples of applications for which Bluetooth direction finding technology is most suitable include:

- Asset tracking
- Navigation
- Wayfinding
- Proximity/Direction detection

### 3.1 Technology

Bluetooth direction finding can be implemented using two different methods, Angle of Arrival (AoA) and of Departure (AoD).

In each case, protocol-specific control information and user data, transmitted as Bluetooth Protocol Data Units (PDU), are appended with direction-finding data known as Constant Tone Extension (CTE). This additional direction-finding data is appended to the end of the packages, as shown in [Figure 2](#).

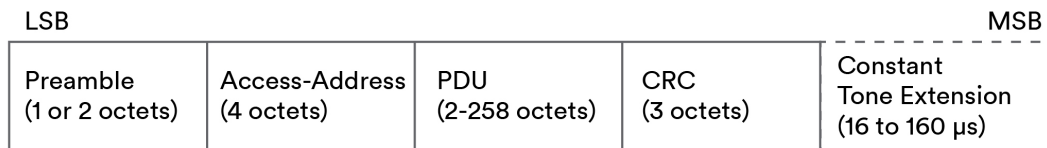


Figure 2: Bluetooth PDU with Constant Tone Extension

#### 3.1.1 Angle of Arrival (AoA)

In AoA systems, the receiver has an antenna array with multiple antennas. The receiver calculates the phase shift between these antennas to detect the direction of the tag that it is tracking. An overview of a system using this method of direction finding is shown in [Figure 3](#).

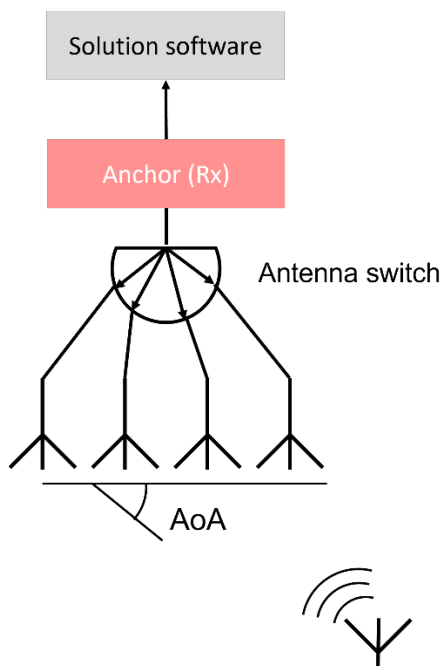
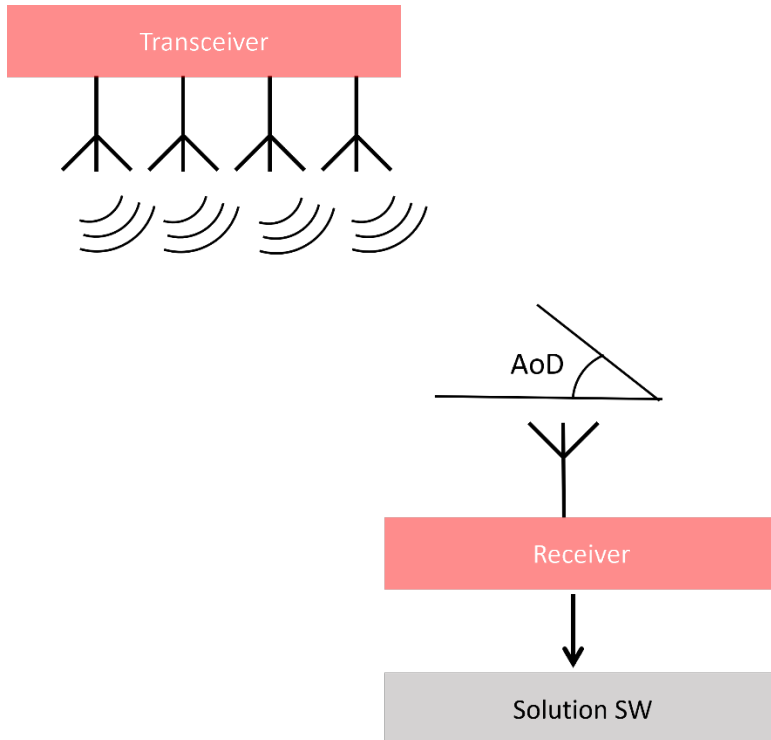


Figure 3: Angle of Arrival (AoA) system architecture

### 3.1.2 Angle of Departure (AoD)

In AoD systems, the transmitter has multiple antennas. The receiver calculates the phase difference between these antennas to determine the direction to the transmitter. By using this data in combination with angle data from other transmitters, the receiver can estimate its position. An overview of a system using this method of direction finding is shown in in [Figure 4](#).



**Figure 4: Angle of Departure (AoD) system architecture**

Typical use cases for an AoD system are for example Automated Guided Vehicle (AGV) and robotics use cases where the moving vehicle has the capability to determine its own location.

### 3.1.3 Angles of measurement

u-locateEmbed software can track a certain number of tags and report their angles in `+UUDE` events over the UART connection. The software employs an algorithm to detect the direction or angles of a moving tag. The software runs on the NINA-B411 module, which is connected to the antenna array on the C211 board.

As the antenna array on the board detects the Constant Tone Extension (CTE) advertised in a tag beacon, the algorithm calculates the angles in two dimensions from the anchor to the tag. The calculated range of the angles is -90 to 90 degrees. Please see [definition of output angles](#) for more information regarding to the output angles.

 Upgrading the software resets all settings to factory default.



# 4 XPLR-AOA anchor nodes and tags

## 4.1 Introduction

Both XPLR-AOA-1 and XPLR-AOA-2 explorer kits include both Bluetooth anchor nodes and tags.

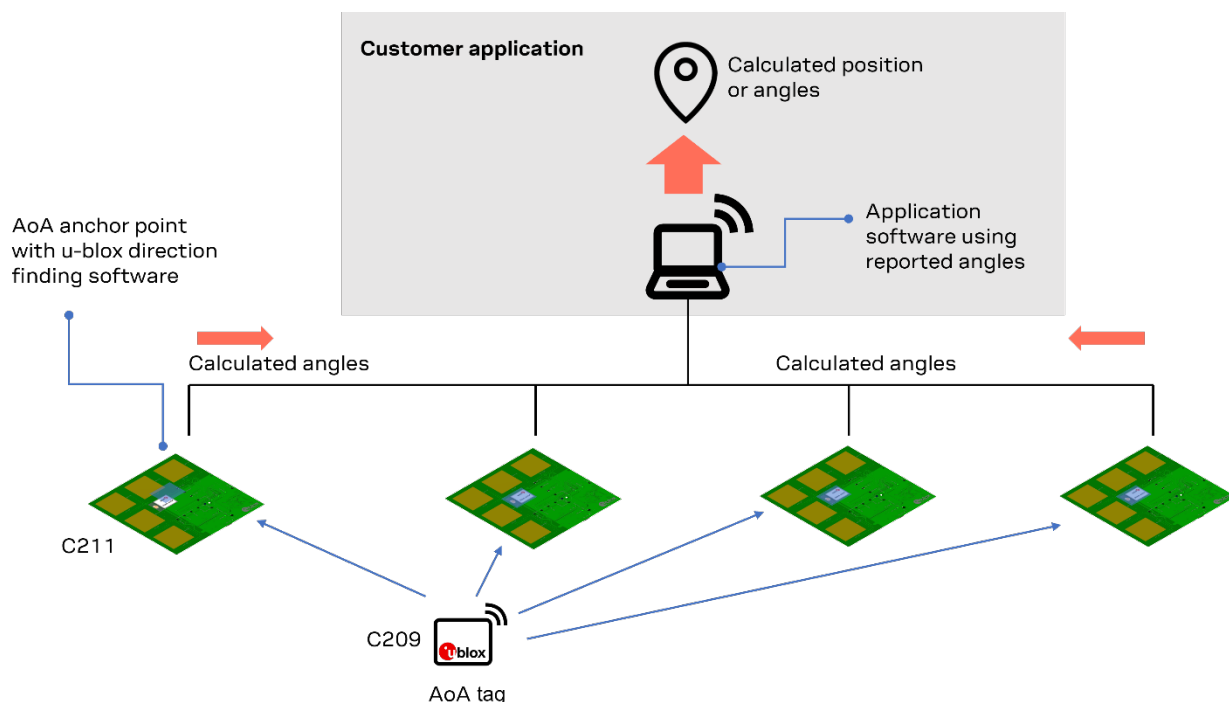
Although this chapter generally describes these nodes and tags in the context of the XPLR-AOA-1 direction finding system, the concepts it describes are equally applicable to the XPLR-AOA-2 indoor positioning explorer kit. For information about the XPLR-AOA-2 positioning engine, setup, and configuration, see also the indoor positioning application note [2].

## 4.2 Overview

u-blox direction finding solutions are comprised of C211 anchor nodes and C209 tags, as shown in Figure 5. See also [Kit includes](#). u-blox direction-finding solution supports the [Angle of Arrival \(AoA\)](#) methodology.

C211 anchor nodes are based on NINA-B4 modules that include support for direction finding. Anchor nodes are based on NINA-B411 u-locateEmbed functionality, whereas C209 tags are based on NINA-B406 open CPU architecture. For more information about these short-range Bluetooth modules, see also the respective data sheets [15][16] and product pages [2].

Figure 5 shows several anchor nodes and a host that uses the combined information from the anchor nodes to calculate the position of the tag. For simple direction finding one anchor node is sufficient.



2 u-blox AG - UBX-20057059 - C2-Restricted

Figure 5: XPLR-AOA direction-finding solution showing four anchor points tracking a single tag

## 4.3 C211 anchor nodes

### 4.3.1 Overview

C211 antenna boards are equipped with a NINA-B411 module and an antenna array. These boards fulfill the role of the anchor node in the XPLR-AOA direction-finding solutions. Anchor nodes run AT command-based u-locateEmbed direction finding software, which delivers AoA data for tracked tags to a listening host. Data is transmitted to the host as events over the NINA-B411 UART interface. See also [Anchor node AT commands](#).

- C211 has an array of five antennas that are used to detect the phase shift for the direction finding – in both horizontal and vertical levels.
- C211 also has an LED array in the form of a cross. The LEDs indicate the direction of tracked beacons. In instances where the anchor node tracks several beacons, the LED array tracks the first C209 tag that is discovered.



Some product variants do not include the LED cross on the C211 antenna board, which is part of the XPLR-AOA kits:

- XPLR-AOA-1-00 C211 has an active LED array
- XPLR-AOA-1-01 C211 does not have an active LED array
- XPLR-AOA-2-00 C211 has an active LED array
- XPLR-AOA-2-01 C211 does not have an active LED array

Figure 6 shows the antenna side of the C211.

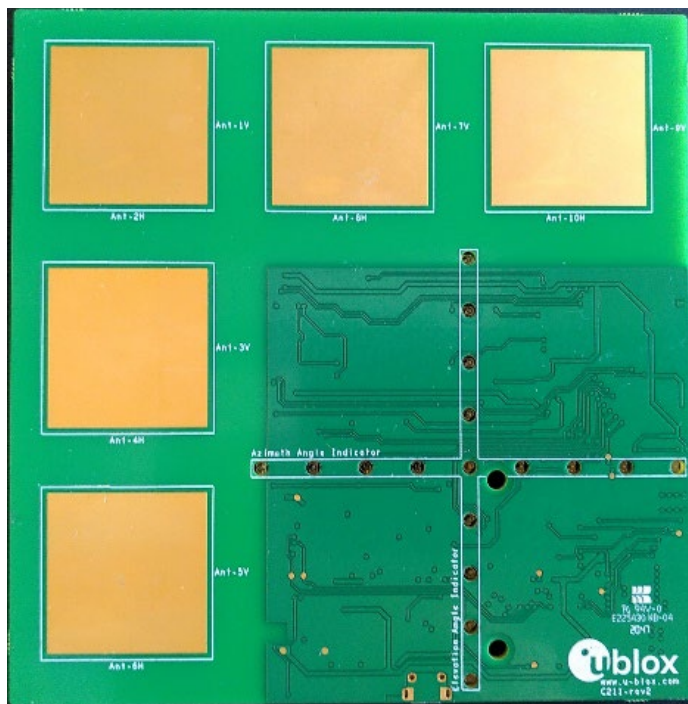


Figure 6: C211 antenna side

The C211 board dimensions are 115 (h) x 114 (w) mm.



C211 schematics are proprietary and not shared.

## 4.3.2 Connectors

### 4.3.2.1 UART

The UART connection must be configured for USB connection with jumpers connecting pins 3 to 5 and 4 to 6 on connector J5, as shown in [Figure 7](#).

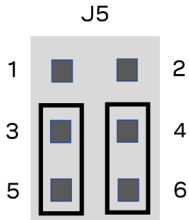


Figure 7: Jumper settings for UART connection over USB

### 4.3.2.2 Buttons

The C211 board has three buttons on one edge of the board:

- RESET: Resets (reboot) the board
- SW1: Initiates factory reset of the board settings: Hold down SW1 during board reset and hold for 10 seconds to trigger a factory reset.
- SW2: Enters the software download mode: Hold down SW2 during board reset to enter the download mode. See also [Flashing](#).

### 4.3.2.3 Arduino interface

C211 boards contain an Arduino compatible interface that can be used to connect, for example, an ODIN-W2 EVK to enable wireless communication over UDP. For further information about UDP, see the u-connectXpress software user guide [\[18\]](#).

The Arduino connectors, J1, J3 and J4, are shown in [Figure 8](#).

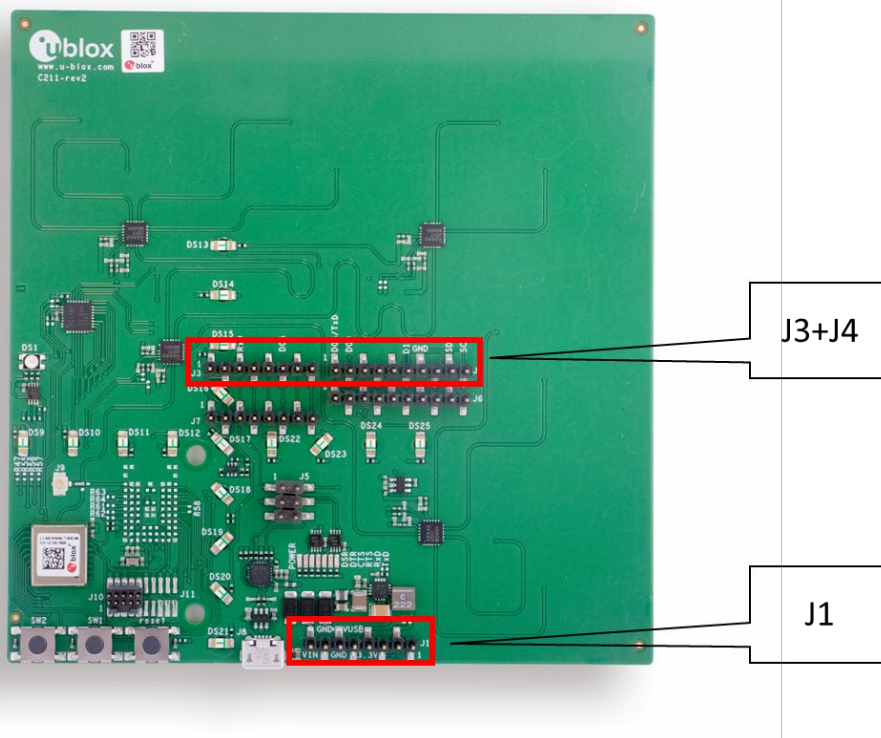


Figure 8: C211 with Arduino connectors marked

#### 4.3.2.3.1 Pinout

The pinout of the Arduino compatible connectors is described in [EVK-ODIN-W2 wireless gateway configuration](#).

Connector	Pin	Name	Description
J1	1	NC	Not connected
	2	IOREF	IO reference voltage
	3	RESET	Reset
	4	3V3	Regulated 3.3 V net. This net is supplied by the board and is always powered as long as a power source is connected.
	5	5V0	5 V supply
	6	GND	Ground
	7	GND	Ground
	8	VIN	External power supply via ODIN-W2
J3	1	NC	Not connected
	2	NC	Not connected
	3	RXD	Can be connected to NINA-B411 GPIO_22/UART_TXD by populating jumper J5 pin [1-3]
	4	NC	Not connected
	5	NC	Not connected
	6	D5	Not Connected. Can be connected to NINA-B411 GPIO_32 by populating position R68.
	7	NC	Not connected
	8	NC	Not connected
J4	1	TXD/D8	Can be connected to NINA-B411 GPIO_23/UART_RXD by populating jumper J5 pin [2-4] Not Connected. Can be connected to NINA-B411 GPIO_33 by populating position R70.
	2	D9	Not Connected. Can be connected to NINA-B411 GPIO_46 by populating position R69.
	3	NC	Not connected
	4	NC	Not connected
	5	NC	Not connected
	6	D13	Not Connected. Can be connected to NINA-B411 GPIO_45 by populating position R67
	7	GND	Ground
	8	NC	Not connected
	9	SDA	Not Connected. Can be connected to NINA-B411 GPIO_4/I2C SDA by populating position R66.
	10	SCL	Not Connected. Can be connected to NINA-B411 GPIO_5/I2C SDL by populating position R65.

Table 2: Pin out of Arduino connectors

#### 4.3.2.3.2 Connecting EVK-ODIN-W2 for wireless communication

When connecting an EVK-ODIN-W2 evaluation kit for wireless communication, you need to redirect the TX channel from the C211 anchor to EKV-ODIN-W2 by modifying the jumpers on the J5 connector, as shown in [Figure 9](#). This connects the UART TX pin on the C211 to UART1 RX on the EVK-ODIN-W2. See also the EVK-ODIN-W2 user guide [\[17\]](#).

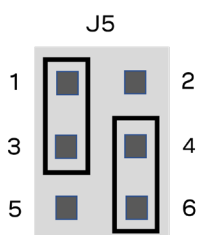


Figure 9: Redirecting C211 UART TX to Arduino connector

#### 4.3.2.3.3 Power supply


When mounting an ODIN-W2 EVK, the application board is powered through the ODIN-W2 EVK USB contact. No other power supply to the C211 board is needed.

#### 4.3.2.4 EVK-ODIN-W2 wireless gateway configuration


For C211 wireless communication through an EVK-ODIN-W2, the EVK must first be configured as a wireless UDP gateway. In this configuration the EVK can:


- Connect to a Wi-Fi network
- Automatically connect to the UDP server at “server\_ip” and “udp\_port”
- Startup in data mode
- Set the UART to 1 Mbps with no flow control

1. Enter the following commands to setup EVK-ODIN-W2 as a wireless UDP gateway:

 Replace the “ssid”, “password”, “server\_ip” and “udp\_port” with suitable values for your network.

```
AT+UWSC=0,0,1
AT+UWSC=0,2,"ssid"
AT+UWSC=0,5,2
AT+UWSC=0,8,"password"
AT+UWSC=0,100,2
AT+UWSC=0,107,0
AT+UWSC=0,300,0
AT+UWSC=0,301,1
AT+UWSCA=0,1
AT+UWSCA=0,3
AT+UDDRP=0,"udp://server_ip:udp_port/",2
AT+UMSM=1
AT+UMRS=1000000,2,8,1,1,0
AT&W
AT+CPWROFF
```

 The above settings start up the module in data mode and change the UART settings to 1 Mbps with no flow control. If you need to modify settings, open the COM port in s-center with 1 Mbps speed and no flow control, and then press the “AT Mode” button to get back into command mode. For more information, see the u-connectXpress AT commands manual [5].

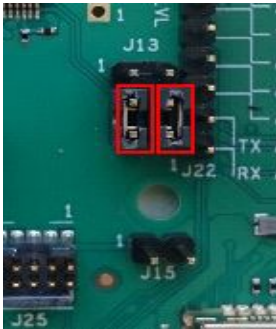
 Note that some commands shown above are not valid in all ODIN-W2 software versions. If any of these commands return an error, use s-center to upgrade your ODIN-W2 EVK to software version 8.0 or later. See also the s-center user guide [19].

For other configuration possibilities see the u-connectXpress AT commands manual [5] and u-connectXpress software user guide [18].

2. After the configuration it is necessary to remove jumpers J13 and J22, as shown in Figure 12. These jumpers select UART1/UART3 on the EVK-ODIN-W2 and direct the UART signals to the Arduino-compatible interface.
3. On C211, set the UART baud rate and other interface settings to 1 Mbps, with no flow control:

```
AT+UMRS=1000000,0
AT&W
AT+CPWROFF
```

**Figure 12.** Shows the location of jumpers J13 and J22. Remove these to select UART1/UART3 on the EVK-ODIN-W2 and direct the UART signals to the Arduino-compatible interface.




**Figure 10:** UART selection jumpers to be removed on ODIN-W2 EVK

### 4.3.3 Flashing u-locateEmbed

C211 boards support a bootloader but are otherwise shipped without software. The u-locateEmbed software container is downloaded from the u-locateEmbed product page [20].

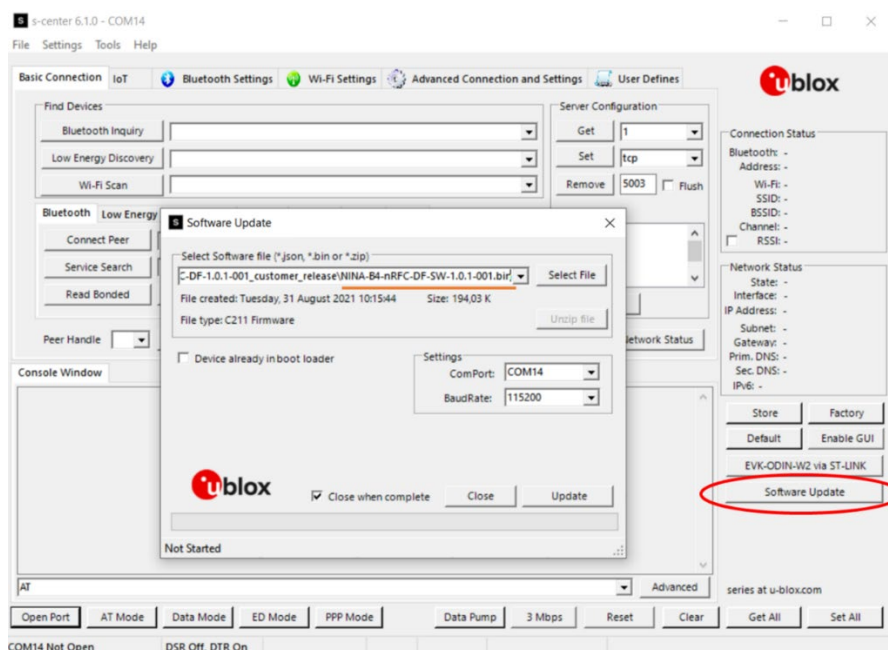
#### 4.3.3.1 Flashing using s-center

u-locateEmbed software is continuously improved with performance and quality enhancements. The antenna board comes pre-flashed with the software, but updating to the latest available version is strongly recommended.

 Flashing u-locateEmbed software over the UART interface requires s-center 6.1 or later.

To flash the software over the UART interface using s-center [7]:

1. Download the u-locateEmbed software container from the u-locateEmbed product page [20].
2. Open s-center on the correct COM port once the module is in software download mode.
3. Select **Software Update**.
4. In the “Software Update” dialog select the binary file in the software container, as shown in Figure 11. Make sure the flashing speed is set to 115200.
5. Select **Update**.



**Figure 11:** Updating the software on the board using s-center

### 4.3.3.2 Command line flashing


To flash the software over the UART interface from the Command line:

1. Download the u-locateEmbed software container from the u-locateEmbed product page [20].
2. Put the device into firmware update mode; either:
  - a) Enter the `AT+UFWUPD` command [5] to select the appropriate baud rate. The following command example sets the baud rate to 1Mbit/s.
3. `AT+UFWUPD=0,1000000`
- b) Boot the board into Software Update mode by connecting the **SWITCH\_2** pin to ground while powering up the board. This sets the default baud rate to 115200.
4. Flash the u-locateEmbed software using the bundled (Windows only) `newtmgr` executable. Alternatively, follow the Newt Manager Guide [10] to install the `newtmgr` application tool for MAC OS, Linux, and Windows.
5. Use `newtmgr` to install u-locateEmbed software on the NINA-B411 module:

```
newtmgr --conntype=serial --connstring="COMXX,baud=XXX,mtu=512" image upload <binary image>
```

6. Press the reset button to reset the application board or reset it with `newtmgr`:

```
newtmgr --conntype=serial --connstring="COMXX,baud=XXX" reset
```


 Replace `COMXX` with your actual port number, `baud=XXX` to either default baud rate 115200 or your chosen baud rate.

### 4.3.4 Configuring the board

When connecting to the USB port on the C211, a serial port (COM port on Windows) is available on the host. Connect the COM port to a terminal emulator or use the s-center tool [7] to initially configure the port settings:

- 115200 kbps
- 8 data bits, no parity, 1 stop bit (8N1)
- Flow control enabled using RTS/CTS

Having configured the COM port, configure the C211 using AT commands. The appropriate AT commands for configuring direction finding through the C211 anchor nodes are described in the u-locateEmbed AT commands manual [22].

 Although s-center does not support specific direction-finding AT commands using buttons, it is possible to configure the COM port as a terminal for use with AT commands.

Due to the large amount of data received over the UART it may be advisable to increase the baud rate over the UART interface. In the following command example, the baud rate is set to 1 Mbps using the command `AT+UMRS`.

```
AT+UMRS=1000000,1
AT&W
AT+CPWROFF
```



## 4.4 C209 tags

### 4.4.1 Overview



C209 is an example implementation of a tag and is not optimized or available as a separate product.

C209 tags are based on the open CPU NINA-B406 module variant. The tags run on custom tag software that advertises as an Eddystone beacon, using extended advertising and using periodic advertising with a Constant Tone Extension added to the periodic advertising packets. This CTE is used by the u-locateEmbed direction finding software that runs on the C211 antenna board to calculate the Angle of Arrival.

The periodic advertising packets may carry customer specific data, for example sensor data.

The namespace included in the transmitted Eddystone-UID beacon is `0x4E494E412D4234544147` and the instance id is based on the MAC address of the NINA-B406 found on the module QR code label. See also [Restore Eddystone Instance ID](#).

C209 tags are powered by a single CR2032 battery (not included) or through the USB connector.

C209 tags includes a versatile sensor node that comprises several sensors for use in a multitude of different applications. The on-board sensors include:

- LIS2DW12 accelerometer
- APDS-9306 ambient light sensor
- BME280 humidity, pressure, and temperature sensor

The main components of any C209 tag are shown in [Figure 12](#).

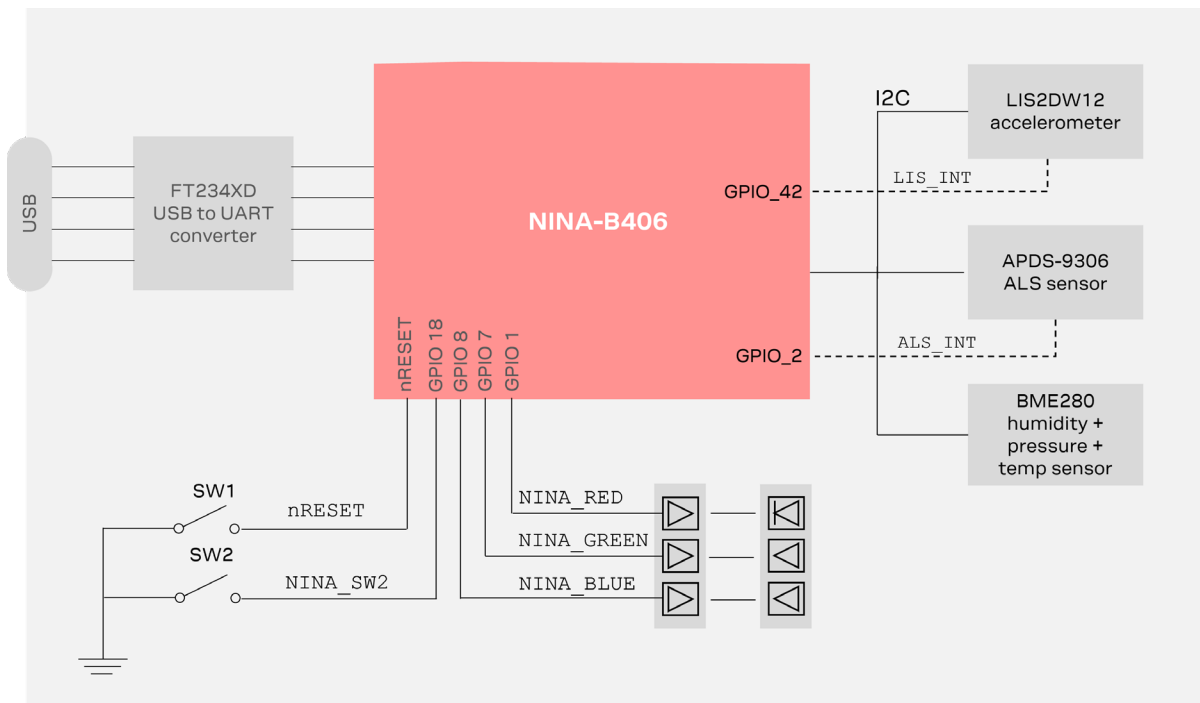



Figure 12: C209 main functional components




The important pin definitions on the C209 application board are described in [Table 3](#).

No.	Name	I/O	Description	Remarks
GPIO_1	RED	O	RED system status signal	Active low
GPIO_2	LIS_INT	I	Interrupt signal from Ambient Light Sensor	 Can cause current leak in default configuration. See C209 GitHub repository [14] for more information.
GPIO_7	GREEN	O	GREEN system status signal	Active low
GPIO_8	BLUE	O	BLUE system status signal	Active low
GPIO_18	SWITCH_2	I	Switch_2 button	Active low
GPIO_20	UART_RTS	O	UART request to send control signal	Used only when hardware flow control is enabled
GPIO_21	UART_CTS	I	UART clear to send control signal	Used only when hardware flow control is enabled
GPIO_22	UART_TXD	O	UART data output	
GPIO_23	UART_RXD	I	UART data input	
GPIO_42	LIS_INT	I	Interrupt signal from accelerometer	

**Table 3: Important pin definitions on the C209**

For more information about programming the module, see also the NINA-B4 system integration manual [6] and NINA-B40 data sheet [15]. See also [C209 schematics](#).

 Although the sensors on the C209 application board are not used in the latest direction-finding tag software from u-blox, the sensors can be utilized in any customer application.

## 4.4.2 Software and flashing

C209 tags are delivered with Direct Firmware Update (DFU) bootloader software only and not the tag software (available from Github [14]) needed for the device to advertise Bluetooth beacons to C211 anchor nodes.

The bootloader on C209 tags are different from those supplied on C211 anchor nodes, and the nrfutil [11] flashing tool is needed to install software over the UART interface and bootloader.

u-blox C209 tag software can be installed using the DFU bootloader or an external debugger. Precompiled packages for each installation option are available from the u-blox C209 software repository [14].

### 4.4.2.1 Preparations

To prepare C209 tags for flashing:

1. Download and unzip the tag software container from the u-blox C209 AoA tag sample application download repository [13], or go to the “Releases” section in the main GitHub repository page [14].
2. If installing the software over the UART interface using the DFU bootloader, press and hold the SW2 button on the C209 tag while resetting the board (either by inserting the USB cable or pressing the RESET button) to set the bootloader in “download” mode. See also [Figure 14](#).

 If the bootloader is in the software download mode, there should not be any LED flashing.

#### 4.4.2.2 Installing tag software with the DFU bootloader using s-center

To flash C209 tags over the UART using s-center [7]:

 Flashing the software over the UART interface requires s-center 6.1 or later.

To flash C209 tags over the UART using s-center [7]:

1. Open s-center on the correct COM port once the module is in SW download mode.
2. Select **Software Update**.
3. In the “Software Update” dialogue, select a zip file from one of the folders ending in “for\_dfu\_boot”, as shown in Figure 13. Make sure the flashing speed is set to 115200.
4. Press **Update**.

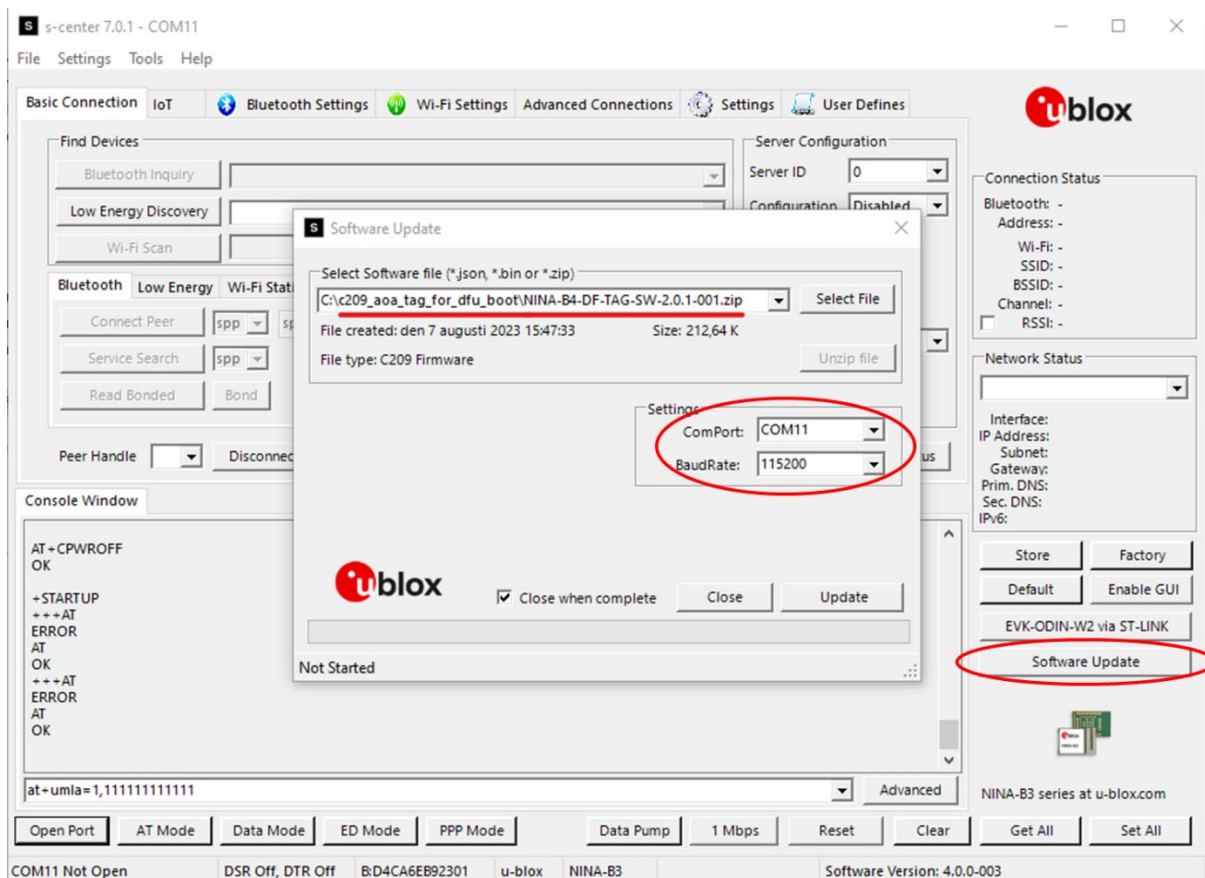



Figure 13: Updating the SW on the C209 board via s-center

#### 4.4.2.3 Installing tag software with the DFU bootloader over the command line

To install C209 tag software with the pre-flashed DFU bootloader on NINA-B406:

1. Download and install the nrfutil flashing tool from the Nordic Github repository [12].
2. Select a zip file from one of the folders ending in “for\_dfu\_boot” to be used for the installation.
3. Use the following command to install the C209 tag software using nrfutil:


```
nrfutil dfu serial -pkg NINA-B4-DF-TAG-SW-<version>.zip -p COMXX -b 115200 -fc 1
```

 Replace COMXX with the appropriate COM port for your system and the name of the zip file with the actual file name.

#### 4.4.2.4 Installing tag software using a debugger

C209 tag software can also be installed using a debugger connected through the J10 10-pin contact on the PCB. To install C209 tag software with the pre-flashed DFU bootloader on NINA-B406:

1. Select one of the folders with a name ending in “no\_boot\_required” and use the hex file in this folder.
2. Connect the debugger to the 10-pin contact on the C209.
3. Flash the hex file from the zip using your debugger.

 Installing tag software with debugger removes the pre-flashed DFU bootloader, DFU bootloader can be restored by flashing the `mbr_nrf52_2.4.1_mbr.hex` and `nrf52833_xxaa_bootloader.hex` using J-Flash Lite/nrfjprog or similar tool. You can find the two bootloader files under GitHub repository[\[14\]](#) in the dfu\_bootloader folder.

## 5 System setup

### 5.1 Anchor node configuration

By default, the C211 Anchor Point comes pre-configured to track all u-blox tags. The u-blox tags advertise with the Eddystone namespace `0x4E494E412D4234544147`, which is default on the C211 to track. So, if you are only using the u-blox supplied XPLR-AOA kit, no configuration is needed.

Each anchor node can be configured with beacons to track. An example for how to set up the anchor to track two tags is shown below:

```
AT+UDFFILT=1,2,"6E616D65737061636578"  
AT+UDFFILT=2,2,"CCF9578E0D8A"  
AT+UDFFILT=2,2,"CCF9578E0D8B"  
AT+UDFENABLE=1 (Tracking is enabled by default, so this is optional)
```

These commands set up the anchor to track the two tags with the given MAC addresses in the Eddystone name space (`6E616D65737061636578`) used by the tags.

The sequence described above reflects the most simplistic use case. Further configuration is possible using the `AT+UDFCFG` command. See also [Configuration direction finding +UDFCFG](#).

The settings shall be saved using the `AT&W` command, followed by a restart (`AT+CPWROFF`).

### 5.2 Tag configuration

#### 5.2.1 Configuring advertising interval

Press the SW2 button on the C209 to change the advertising interval.

When SW2 is pressed, the advertising interval cycles through the available advertising intervals. For best performance, it is advisable to use the fastest advertising interval. The LED blinks briefly to indicate the advertising interval, with one blink indicating the fastest advertising.

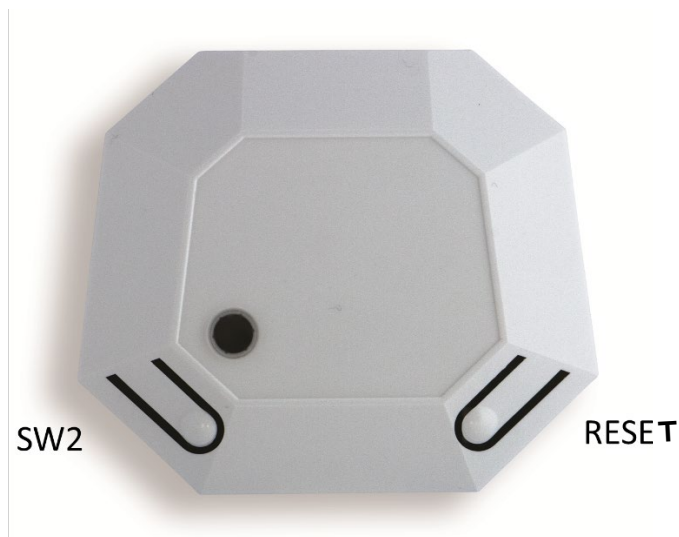



Figure 14: C209 showing cover and buttons

C209 tags are simply configured over the UART interface using AT commands.


The AT commands that can be used to configure the interface are described in [Table 4](#).

Command	Description
AT+UMLA=1	Read Local MAC address
AT+GMM	Read the model identifier, NINA-B4-TAG
AT+TXPWR=<valid_tx_power>	<valid_tx_power> can be one of: -40, -30, -20, -16, -12, -8, -4, 0, 2, 3, 4, 5, 6, 7, 8 (dBm)
AT+TXPWR?	Query the set TX power

**Table 4: C209 AT commands**

 For +TXPWR to take effect the software must be reset, by pressing the reset button or power cycling the module. The configuration is persistently stored in flash.

All commands are echoed and responded with either `\r\nOK\r\n` or `\r\nERROR\r\n`, and should be terminated with `\r`.

 The UART interface is available for 10 seconds after reset with the settings 115200 bps, with no flow control.

## 5.2.2 Enabling/disabling advertising

Press and hold the C209 button for ~3 seconds to enable/disable advertising. If the tag is advertising, press and hold the button to stop it advertising. The onboard RGB LED blinks blue when advertising is enabled.

## 5.3 Restore Eddystone Instance ID

All u-blox modules are delivered with a u-blox MAC address, which is written into the UICR register.

If the MAC address is accidentally erased, for example during a reflash of the software, this information is lost. If this happens, the Eddystone Instance ID transmitted in the C209 advertising beacon will not match the MAC address of the module. To correct this:

1. Scan the QR code on the module label. The information in the code includes a code that includes the MAC address (shown here in bold): H85(**CCF9578E0D89**)0400.
2. While having a debugger connected to the SWD interface of the board enter these commands to reinstate the MAC address **CCF9578E0D89** into the UICR of the module:

```
nrfjprog --memwr 0x10001080 --val 0x8E57F9CC
nrfjprog --memwr 0x10001084 --val 0xFFFF890D
```

Another example for which the MAC address given in the scan code is **0123456789AB**:

```
nrfjprog --memwr 0x10001080 --val 0x67452301
nrfjprog --memwr 0x10001084 --val 0xFFFFAB89
```

3. After writing the MAC address, reset the module. The module now transmits the correct Eddystone Instance ID for the C209 tag.

## 6 Running system

A green LED light indicates that the board is powered on.

Having connected the COM port, the board is ready to receive AT commands. For information about the AT commands to use for configuring direction finding, see the u-locateEmbed AT commands manual [22].

s-center supports specific direction-finding AT commands in the Angle of Arrival tab, as shown in Figure 16. The COM port can also be used with a terminal emulator to type in AT commands.

Once the system is setup, each anchor reports, over the serial port connection, angle calculation events (+UUDF) when it detects a beacon:

```
+UUDF:CCF9578E0D8A,-42,20,0,-43,37,"CCF9578E0D89","",15869,23
+UUDF:CCF9578E0D8B,-41,10,4,-42,38,"CCF9578E0D89","",15892,24
+UUDF:CCF9578E0D8A,-42,-10,2,-43,39,"CCF9578E0D89","",15921,25
...
```

The data reported in these events can be used to estimate the position of the tracked beacon. For more information about the +UUDF event parameters, see the u-locateEmbed AT commands manual [22].

The parameters of the +UUDF event are (from left to right):

- Eddystone instance ID
- RSSI of 1<sup>st</sup> polarization
- Angle 1
- Angle 2
- Reserved
- Detected channel
- Anchor ID as set by AT+UDFCFG tag 4
- User defined strings as set by AT+UDFCFG tag 2
- Timestamp
- Periodic advertising sequence number

In the events reported above, the beacon is moving from one side of the anchor to the other as angle1, which is given as the third parameter in the event (shown in bold). The beacon moves from a positive value (20) to a negative value (-10). The movement of the tag for these events is shown in Figure 15.

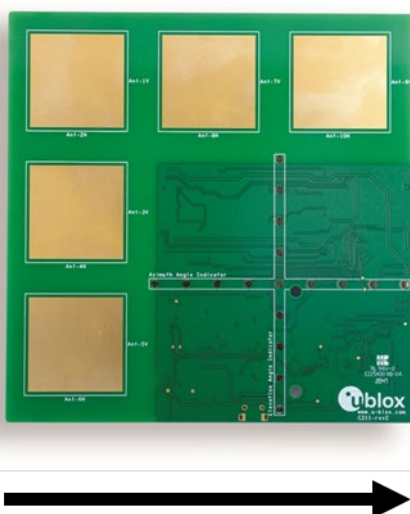


Figure 15: Tag movement

- The optimal distance between anchor nodes and tags is approximately 2–15 m.
- A slight degradation in the accuracy of the reported angle can be expected close to the outer limits of the angle range. To maximize accuracy, the anchor should normally point to the center of the area of interest.

The angle events can also be visualized in the s-center [7] support application using the “IoT->Angle of Arrival” tab, as shown in Figure 16.

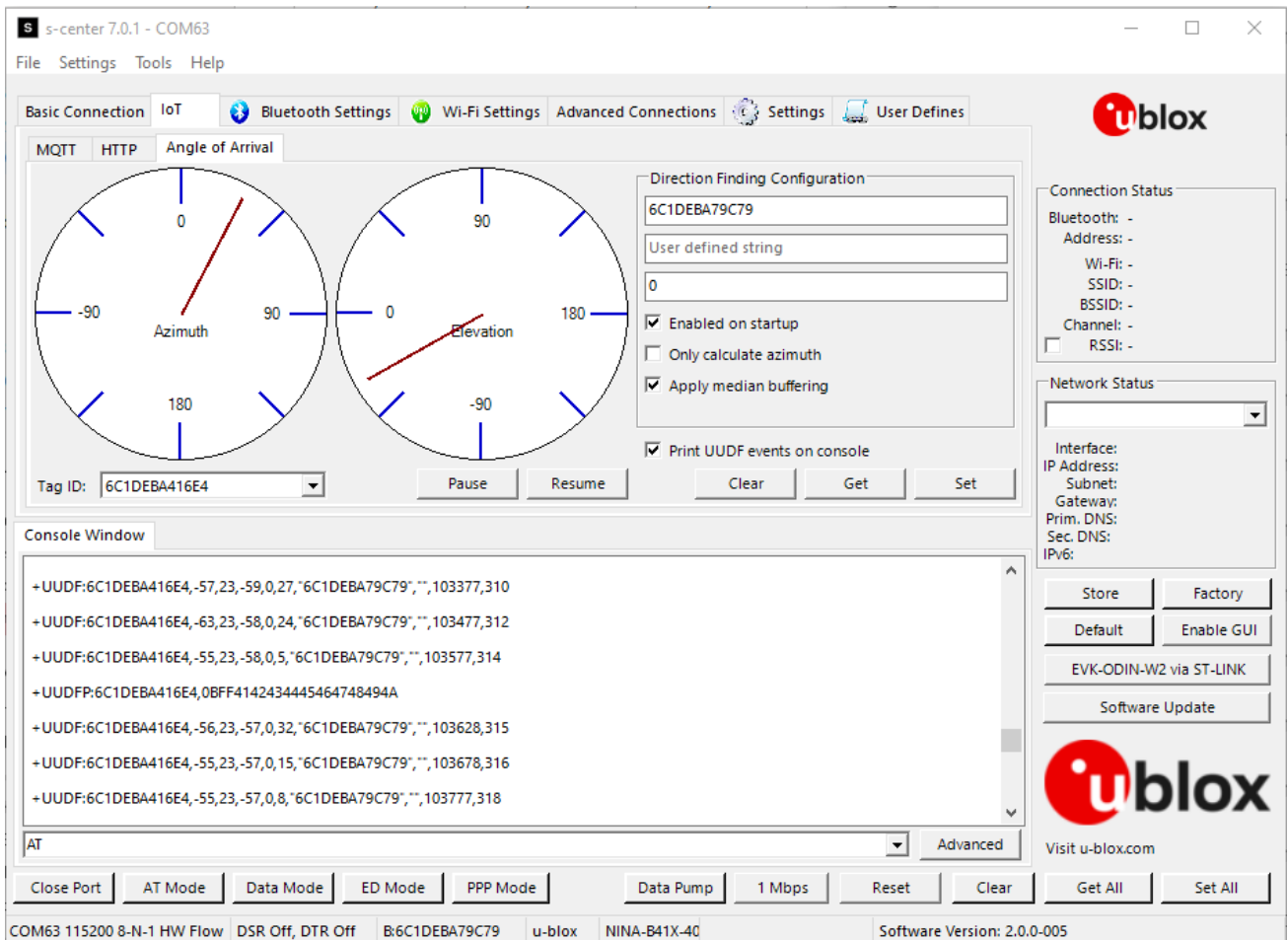


Figure 16: s-center with Angle of Arrival tab

- By default, the “Print UUDF events on console” check box is deselected. This means that +UUDF angle events are not printed on the console.

# Appendix

## A Glossary

Abbreviation	Definition
AoA	Angle of Arrival
AoD	Angle of Departure
CTE	Constant Tone Extension
RSSI	Received Signal Strength Indication
UICR	User Information Configuration Register

**Table 5: Explanation of the abbreviations and terms used**

## B Limitations

The u-locateEmbed software (2.0 and higher) supports continuous tracking of up to 25 individual tags.

Tags that do not send any data for more than five seconds are considered idle and are removed from the list of tracked tags. Newly identified tags are automatically added to the list of tracked tags.

When there are more than 25 tags within reach a round-robin scheduling algorithm is applied enabling the module to track all tags. This causes some lag in the reporting for individual tags as not all visible tags are continuously tracked.



## C Definition of output angles

Three angles can be output from C211:

- azimuth – azimuth\_angle
- elevation – elevation\_angle
- direct' - the complementary angle of direct angle, where  $direct\_angle = 90^\circ - direct'$

Figure 17 shows the three angle outputs in relation to the white dots that represent the antenna board. The x- and y-axis represent the normal outward orientation of the board.

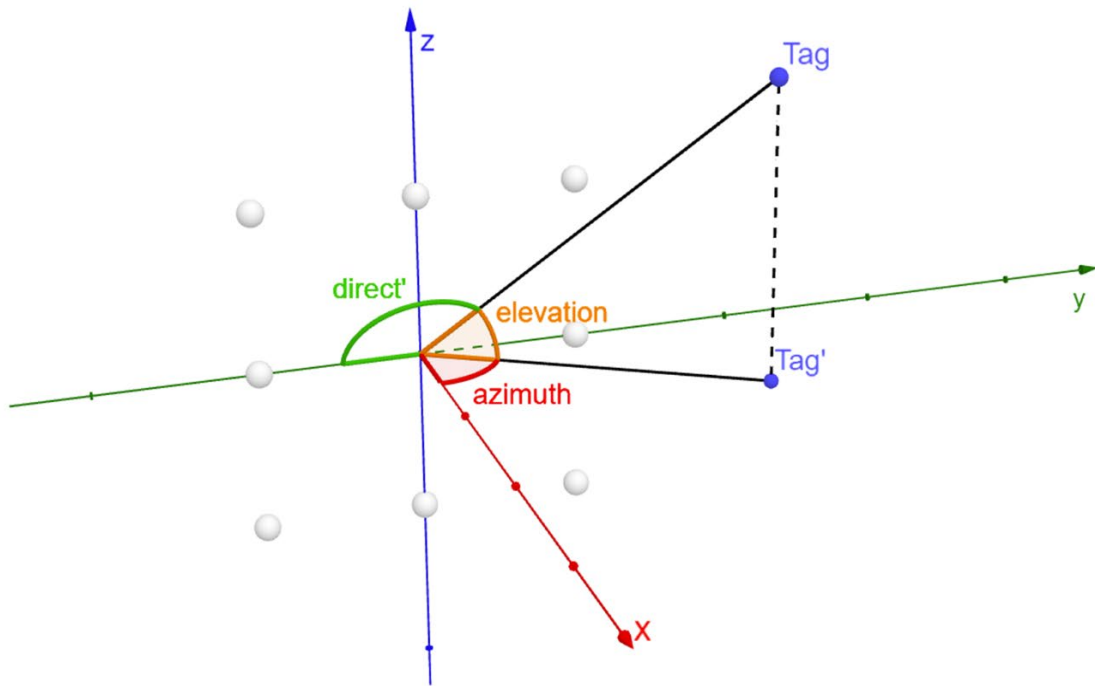


Figure 17: 3D space diagram – illustrate three angles

By default, u-locateEmbed reports the “azimuth\_angle” and “elevation\_angle”:

```
+UUDF:<ed_instance_id>,<rssi>,<azimuth_angle>,<elevation_angle>,<not_used>,<channel>,<anchor_id>,<user_defined_str>,<timestamp_ms>,<periodic_event_counter>
```

u-locateEmbed can be configured to output “direct\_angle” and “elevation\_angle” with “AT+UDFCFG=13,0”, where:

```
+UUDF:<ed_instance_id>,<rssi>,<direct_angle>,<elevation_angle>,<not_used>,<channel>,<anchor_id>,<user_defined_str>,<timestamp_ms>,<periodic_event_counter>
```

Note the calculated range of the angles is -90 to 90 degrees.

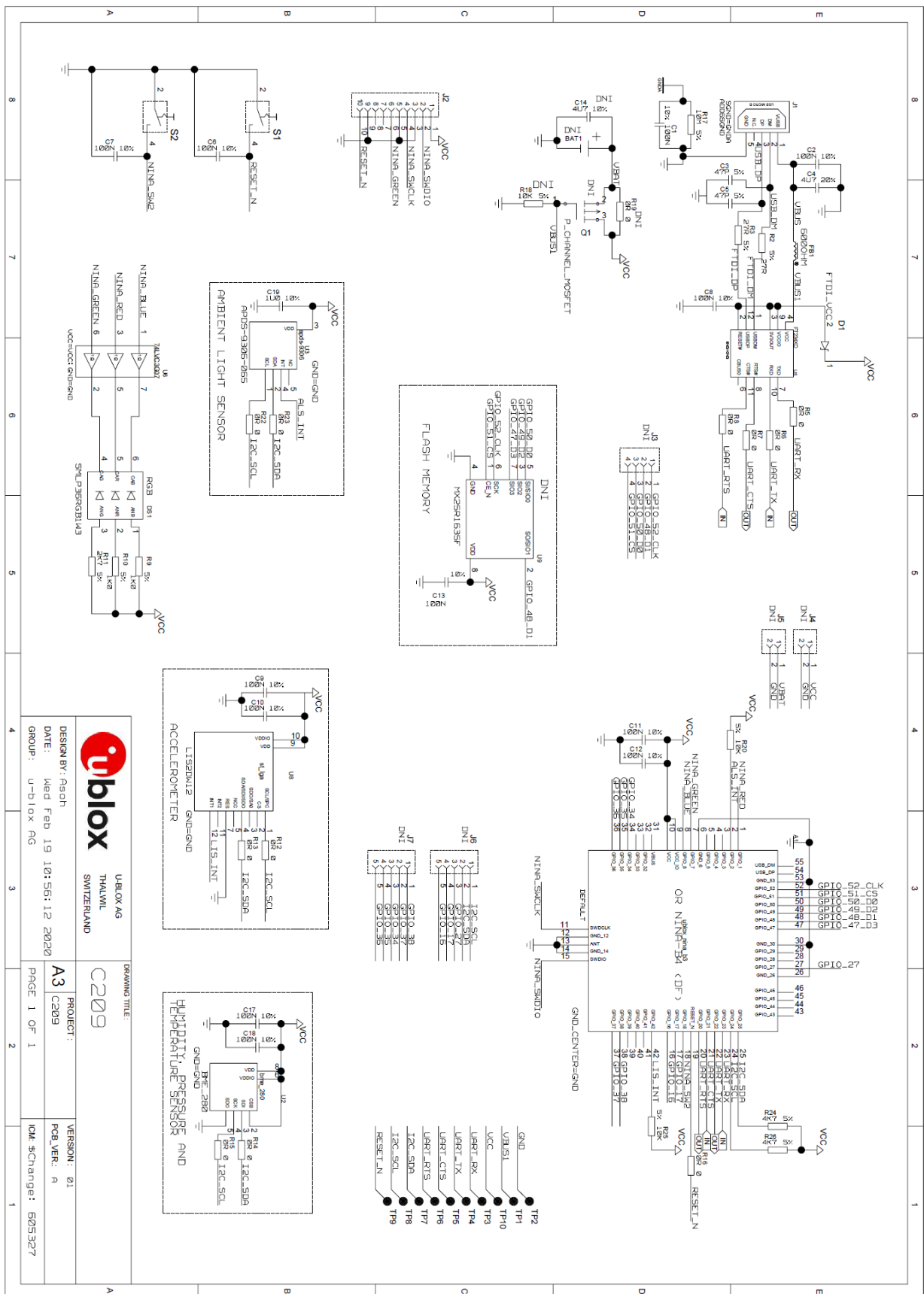
The “azimuth\_angle” and “direct\_angle” are positive from the positive x-axis to negative y-axis but negative from the positive x-axis towards the positive y-axis. Conversely, the “elevation\_angle” is positive from the positive x-axis towards the positive z-axis but is negative from the positive x-axis toward negative z-axis.

When the tag is moving along the x-axis, the two reported angles should both be zero.



Software versions prior to u-locateEmbed 3.0 always report direct\_angle.

# D C209 schematics



## Related documentation

- [1] Bluetooth Direction Finding: A Technical Overview  
<https://www.bluetooth.com/bluetooth-resources/bluetooth-direction-finding/>
- [2] Bluetooth indoor positioning application note, [UBX-21006395](#)
- [3] NINA-B41 product page, <https://www.u-blox.com/en/product/nina-b41-series-u-connect>
- [4] NINA-B40 product page, <https://www.u-blox.com/en/product/nina-b40-series-open-cpu>
- [5] u-connectXpress AT commands manual, [UBX-14044127](#)
- [6] NINA-B4 system integration manual, [UBX-19052230](#)
- [7] s-center, <https://www.u-blox.com/en/product/s-center>
- [8] u-blox webinars, <https://www.u-blox.com/en/webinar>
- [9] newtmgr download: [https://mynewt.apache.org/latest/newtmgr/install/install\\_windows.html](https://mynewt.apache.org/latest/newtmgr/install/install_windows.html)
- [10] Newt Manager Guide: <https://mynewt.apache.org/latest/newtmgr/index.html>
- [11] [https://infocenter.nordicsemi.com/index.jsp?topic=%2Fug\\_nrfutil%2FUG%2Fnrfutil%2Fnrfutil\\_intro.html](https://infocenter.nordicsemi.com/index.jsp?topic=%2Fug_nrfutil%2FUG%2Fnrfutil%2Fnrfutil_intro.html)
- [12] <https://github.com/NordicSemiconductor/pc-nrfutil/releases>
- [13] GitHub, u-blox C209 AoA tag sample application (download)
- [14] GitHub, [c209 main repository](#)
- [15] NINA-B40 series data sheet, [UBX-19049405](#)
- [16] NINA-B41 series data sheet, [UBX-20035327](#)
- [17] EVK-ODIN-W2 user guide, [UBX-16007132](#)
- [18] u-connectXpress software user guide, [UBX-16024251](#)
- [19] s-center user guide, [UBX-16012261](#)
- [20] u-locateEmbed [product page](#)
- [21] FTDI website <https://ftdichip.com/drivers/>
- [22] u-locateEmbed AT command manual, [UBX-22025586](#)



For product change notifications and regular updates of u-blox documentation, register on our website, [www.u-blox.com](http://www.u-blox.com).

# Revision history

Revision	Date	Name	Comments
R01	05-Mar-2021	mape	Initial release
R02	28-Jun-2021	mape	Revised document title to reflect product scope including XPLR-AOA-x explorer kits. Added product description chapter and included hardware information describing anchors and tags. Introduced NINA-B411 and updated AT commands for u-connectLocate software.
R03	17-Sep-2021	mape	Corrected description of the RS232 command <code>AT+UMRS</code> in <a href="#">Anchor node AT commands</a> . Improved C209 <a href="#">Software and flashing</a> procedures and corrected link to the C209 GitHub repository,
R04	28-Oct-2021	mape	Added optimal distance anchor to tag in <a href="#">Running system</a> . Added description of product variants for C211 in <a href="#">Overview</a> . Added information about C211 <a href="#">Buttons</a> . Corrected filter type example in <a href="#">Anchor node configuration</a> .
R05	10-Jan-2022	mape	Added note about RSSI values to +UUDF events. Corrected information about optimal distance tag – anchor. Various minor improvements.
R06	28-Feb-2022	mape	Added <a href="#">Quick start guide</a> and link to u-connectLocate software. Updated figure showing C209 main functional components in <a href="#">Overview</a> .
R07	31-Mar-2022	mape	Added updates for u-connectLocate v1.2. Updated <a href="#">Limitations</a> chapter. Added s-center flashing to <a href="#">Flashing</a> and <a href="#">Installing tag software with the DFU bootloader</a> . Updated <a href="#">UDFCFG</a> tag 6. Described the Angle of Arrival tab in s-center.
R08	7-Apr-2022	mape	Added information about different XPLR-AOA-1 variants. Added <a href="#">Ordering information</a> .
R09	1-Jun-2022	mape	Removed ordering code information duplicated in <a href="#">Product description</a> . Added note in <a href="#">Kit includes</a> to describe the absence of LED arrays in later product versions. Updated contact information.
R10	21-Dec-2022	mape	Revised document title. Removed AT commands description in appendix. Added link to new u-connectLocate AT commands manual. Included minor updates to <a href="#">Tag configuration</a> and <a href="#">Running system</a> related to u-connectLocate 2.0.
R11	21-Jul-2023	mape	Minor clarifications throughout document. Updated contact information.
R12	17-Nov-2023	lliu, mape	Clarified the update procedures for C209 tags in <a href="#">Software and flashing</a> . Updated command line command for flashing for C211 software. Updated angle descriptions in <a href="#">Angles of measurement</a> and <a href="#">Running system</a> .
R13	02-Feb-2024	lliu	Added <a href="#">angle definition</a> in appendix and renamed u-connectLocate to u-locateEmbed.

## Contact

### u-blox AG

Address: Zürcherstrasse 68  
8800 Thalwil  
Switzerland

For further support and contact information, visit us at [www.u-blox.com/support](http://www.u-blox.com/support).