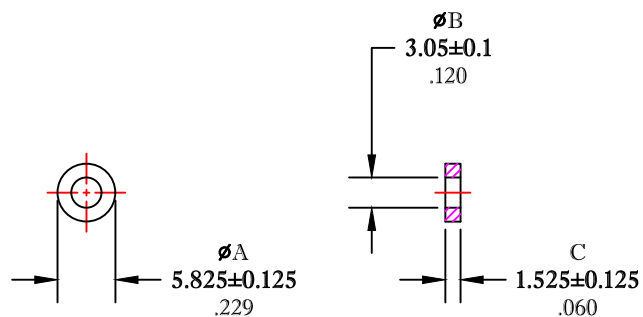


** Not all features are shown in this drawing. For more detailed information, please contact your Fair-Rite representative.

UNCONTROLLED ~CATALOG~ DRAWING

SIZE	PART NO.	REV.
B	5975000101	~



DIMENSIONS
BOLD NUMBERS ARE IN MILLIMETERS
 LIGHT NUMBERS ARE IN INCHES

ELECTRICAL SPECIFICATIONS						
$\Sigma l/A(\text{mm}^{-1})$	le (mm)	Ae (mm ²)	Ve (mm ³)	Lo (nH)	AL (nH) @10kHz <10gauss	$\tan \delta/\mu_1$ @100kHz 1gauss
6.3677	13.0	2.04	26.6	0.197	785±20%	≤20X10E-6

NOTES:

- 1 - BURNISH TO BREAK SHARP EDGES.
- 2 - ELECTRICAL TESTING TO BE PERFORMED AS PER FAIR-RITE PRODUCTS CORP. SOP# ELC-45.

FR# 75

FAIR-RITE PRODUCTS CORP.					
TITLE TOROID					
DRAWN BY J.SERENCIS	DATE 07-17-2018	SIZE	PART NO.	REV.	
CHKD BY		B	5975000101	~	
APPRVD BY		SCALE	NONE	SHEET 1 of 1	