

C4H2350N05

Power GaN transistor

Rev. 1 — 8 July 2021

AMPLEON

Product data sheet

1. Product profile

1.1 General description

5 W GaN packaged power transistor for base station applications.

Table 1. Typical performance

Typical RF performance at $T_{case} = 25\text{ °C}$ in a class-AB application demo circuit. $V_{DS} = 48\text{ V}$; $I_{DQ} = 10\text{ mA}$; unless otherwise specified.

Test signal	f	I_{DQ}	V_{DS}	$P_{L(AV)}$	G_p	η_D	ACPR	$P_{L(3dB)}$
	(MHz)	(mA)	(V)	(dBm)	(dB)	(%)	(dBc)	(dBm)
1-carrier W-CDMA [1]	2496 to 2690	10	48	22.2	18.5	13.0	-34	-
pulsed CW [2]	2496 to 2690	10	48	-	-	-	-	36.6

[1] Test signal: 1-carrier W-CDMA; 3GPP test model 1; 64 DPCH; PAR = 9.7 dB at 0.01 % probability on CCDF.

[2] Test signal: pulsed CW; $t_p = 12\text{ }\mu\text{s}$; $\delta = 10\text{ }\%$.

1.2 Features and benefits

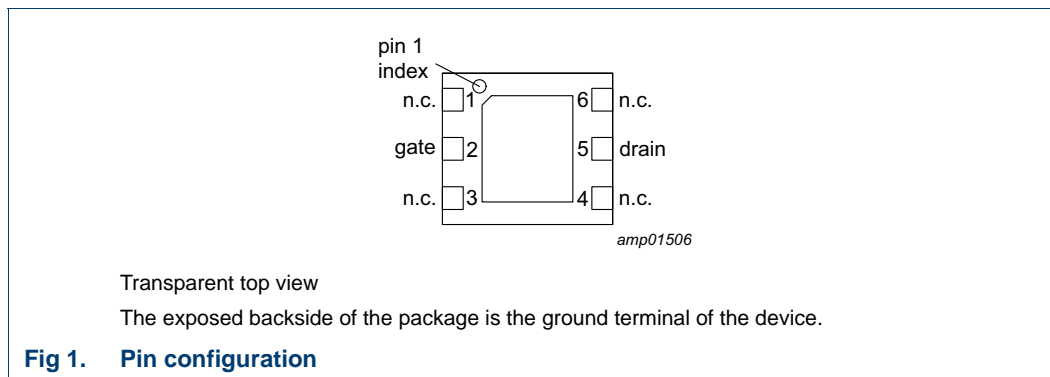
- Excellent digital pre-distortion capability
- High efficiency
- Designed for broadband operation
- Lower output capacitance for improved performance in applications
- For RoHS compliance see the product details on the Ampleon website

1.3 Applications

- RF power amplifier for base stations and multi carrier applications in the 2300 MHz to 5000 MHz frequency range

2. Pinning information

2.1 Pinning



2.2 Pin description

Table 2. Pin description

Symbol	Pin	Description
n.c.	1	not connected
gate	2	gate
n.c.	3	not connected
n.c.	4	not connected
drain	5	drain
n.c.	6	not connected

3. Ordering information

Table 3. Ordering information

Package name	Orderable part number	12NC	Packing description	Min. orderable quantity (pieces)
DFN-4.5x4-6-1	C4H2350N05X	9349 603 95525	TR13; 3000-fold; 12 mm; dry pack	3000
	C4H2350N05Z	9349 603 95515	TR7; 1000-fold; 12 mm; dry pack	1000

4. Limiting values

Table 4. Limiting values

In accordance with the Absolute Maximum Rating System (IEC 60134).

Symbol	Parameter	Conditions	Min	Max	Unit
V_{DD}	supply voltage	operating	-	52	V
V_{DS}	drain-source voltage	$V_{GS} = -8$ V	-	150	V
V_{GS}	gate-source voltage		-15	+2	V
I_{GF}	forward gate current		-	0.55	mA
T_{stg}	storage temperature		-65	+150	°C
T_{ch}	active die channel temperature	[1]	-	275	°C
T_{case}	case temperature	operating [1]	-40	+140	°C

[1] Continuous use at maximum temperature will affect the reliability, for details refer to the online MTF calculator.

5. Thermal characteristics

Table 5. Thermal characteristics

Symbol	Parameter	Conditions	Typ	Unit
$R_{th(s-c)(IR)}$ [1]	thermal resistance from active die surface to case by Infrared measurement	$T_{case} = 105$ °C; $P_{dis} = 4.8$ W	17.5	K/W
$R_{th(ch-c)(FEA)}$ [2]	thermal resistance from active die channel to case by Finite Element Analysis	$T_{case} = 105$ °C; $P_{dis} = 4.8$ W	25.9	K/W

[1] Infrared (IR) thermal values are for reference only and cannot be used to determine performance or reliability.

[2] Finite Element Analysis (FEA) thermal values have been used for the online MTF calculator.

6. Characteristics

Table 6. DC characteristics

$T_j = 25$ °C unless otherwise specified.

Symbol	Parameter	Conditions	Min	Typ	Max	Unit
$V_{GS(th)}$	gate-source threshold voltage	$V_{DS} = 10$ V; $I_D = 0.55$ mA	-3.45	-2.82	-2.15	V
V_{GSq}	gate-source quiescent voltage	$V_{DS} = 50$ V; $I_D = 11$ mA	-3.25	-2.54	-1.95	V
$I_{D(leak)}$	drain leakage current	$V_{GS} = -10$ V; $V_{DS} = 50$ V	-	-	0.133	mA
I_{GSS}	gate leakage current	$V_{GS} = -8$ V; $V_{DS} = 0$ V	-	-	0.0266	mA

Table 7. RF characteristics

Test signal: pulsed CW; $t_p = 50$ μ s; $\delta = 1.38$ %; $f_1 = 2496$ MHz; $f_2 = 2690$ MHz; RF performance at $V_{DS} = 48$ V; $I_{Dq} = 10$ mA; $T_{case} = 25$ °C; unless otherwise specified; in a class-AB production RF test circuit.

Symbol	Parameter	Conditions	Min	Typ	Max	Unit
G_p	power gain	$P_{L(AV)} = 0.182$ W	15.8	18.6	-	dB
η_D	drain efficiency	$P_{L(AV)} = 0.182$ W	9	12	-	%
$P_{L(3dB)}$	output power at 3 dB gain compression		3	4.3	-	W

7. Test information

7.1 Ruggedness in class-AB operation

The C4H2350N05 is capable of withstanding a load mismatch corresponding to $V_{SWR} = 10 : 1$ through all phases under the following conditions: $V_{DS} = 48$ V; $I_{DQ} = 10$ mA; $P_L = 4$ W (pulsed CW; $t_p = 100$ μ s; $\delta = 10$ %); $f = 2496$ MHz; tested on the class-AB RF test circuit.

7.2 Impedance information

Table 8. Typical impedance of maximum power and drain efficiency

Measured load-pull data; all data measured on a harmonic impedance non-optimized load-pull fixture; $I_{DQ} = 6$ mA; $V_{DS} = 50$ V; test signal: pulsed CW; $t_p = 100$ μ s; $\delta = 10$ %; typical values unless otherwise specified.

f	Z_S [1]	Z_L [1]	P_L [2]	η_D [2]	G_p [2]
(MHz)	(Ω)	(Ω)	(W)	(%)	(dB)
Maximum power load					
2500	$42.7 + j10.9$	$40.9 + j71.4$	5.1	54.7	19.6
2600	$64.4 + j16.2$	$31.8 + j67.4$	5.5	61.1	19.9
2700	$57.1 + j4.6$	$32.0 + j67.1$	5.0	57.9	19.8
Maximum drain efficiency load					
2500	$42.7 + j10.9$	$26.0 + j78.7$	4.4	61.7	20.9
2600	$64.4 + j16.2$	$19.1 + j73.8$	4.0	65.7	21.2
2700	$57.1 + j4.6$	$19.1 + j73.8$	3.5	61.8	21.1

[1] Z_S and Z_L defined in [Figure 2](#).

[2] At 3 dB gain compression.

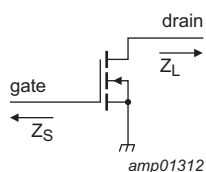


Fig 2. Definition of transistor impedance

7.3 Test circuit

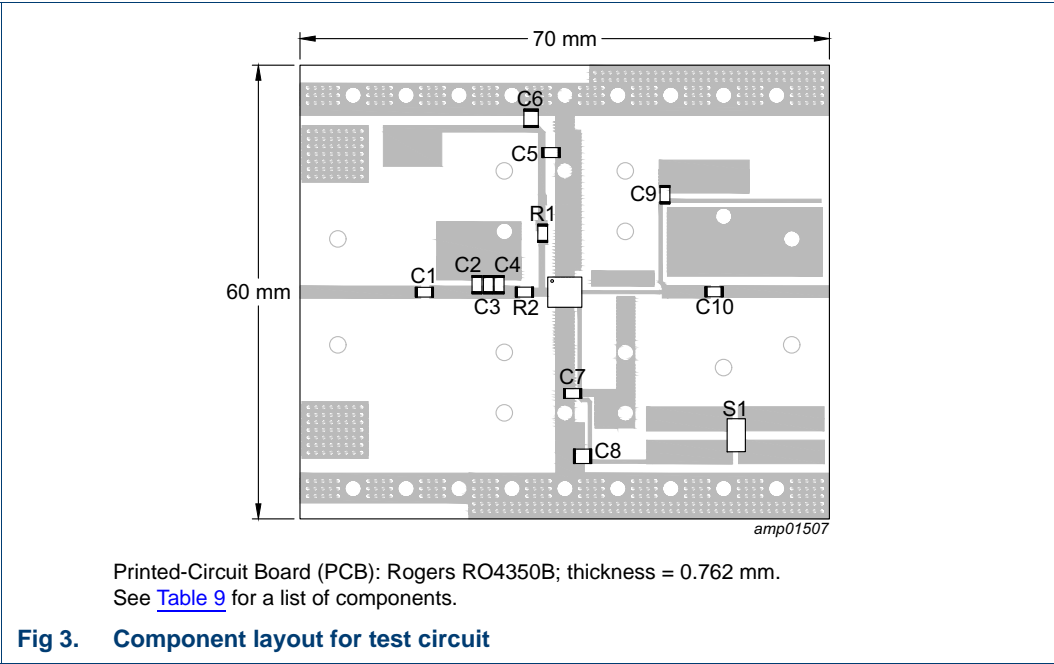


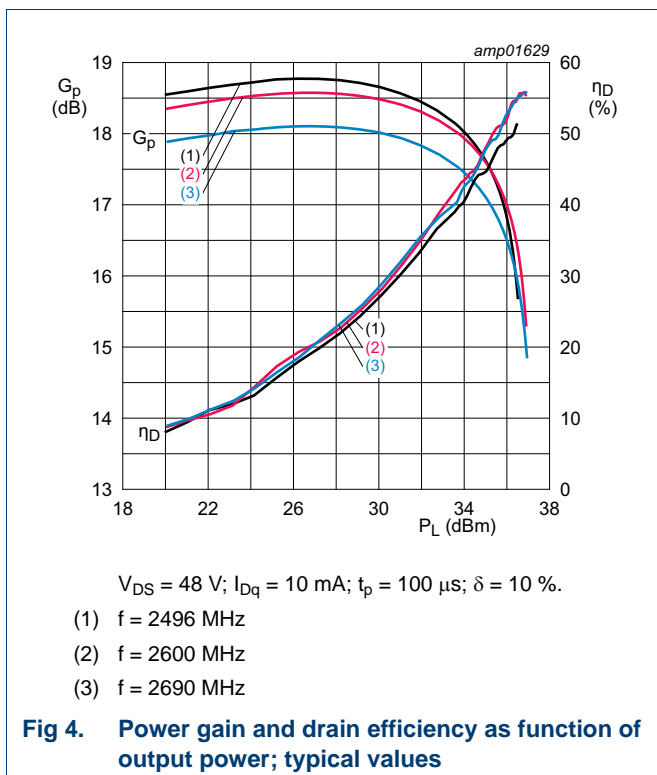
Table 9. List of components
See [Figure 3](#) for component layout.

Component	Description	Value	Remarks
C1, C5, C7, C9, C10	multilayer ceramic chip capacitor	8.2 pF	ATC 600F
C2, C3, C4	multilayer ceramic chip capacitor	0.5 pF	ATC 600F
C6, C8	multilayer ceramic chip capacitor	10 μ F, 100 V	Murata
R1, R2	resistor	5.6 Ω	SMD 0603
S1	four terminal high precision current sense resistor	0.01 Ω	Ohmite: LVK25 (1224) or of same quality

7.4 Graphical data

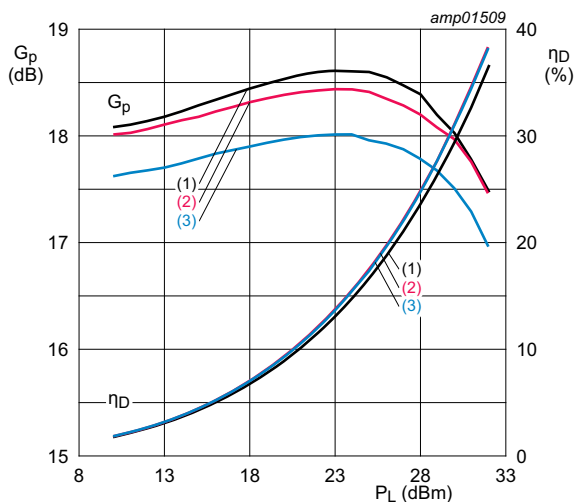
All data are measured on the class-AB development RF test circuit.

7.4.1 Pulsed CW



7.4.2 1-Carrier W-CDMA

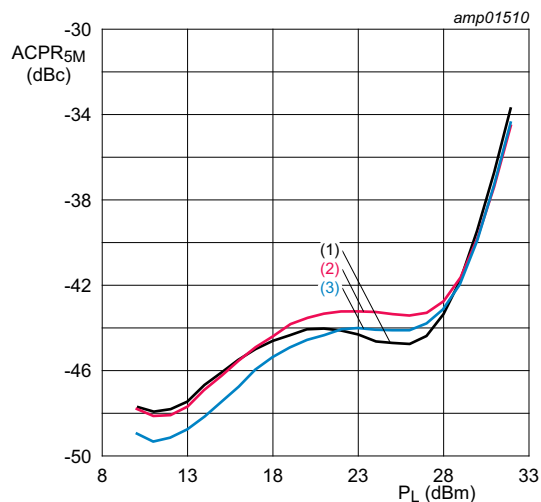
Test signal: 1-carrier W-CDMA; 3GPP test model 1; 64 DPCH; PAR = 7.2 dB at 0.01 % probability on the CCDF.



$V_{DS} = 48 \text{ V}$; $I_{DQ} = 10 \text{ mA}$.

- (1) $f = 2498.5 \text{ MHz}$
- (2) $f = 2600 \text{ MHz}$
- (3) $f = 2687.5 \text{ MHz}$

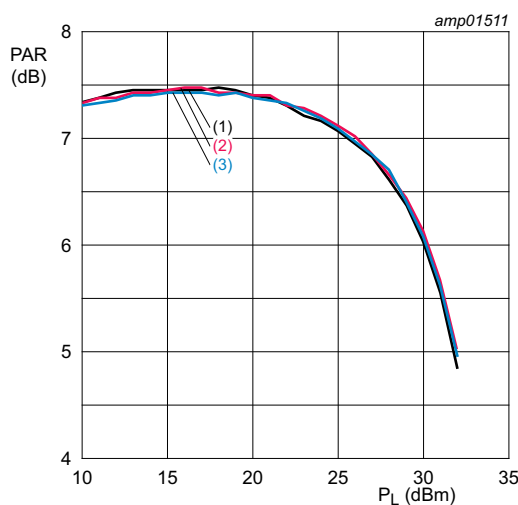
Fig 5. Power gain and drain efficiency as function of average output power; typical values



$V_{DS} = 48 \text{ V}$; $I_{DQ} = 10 \text{ mA}$.

- (1) $f = 2498.5 \text{ MHz}$
- (2) $f = 2600 \text{ MHz}$
- (3) $f = 2687.5 \text{ MHz}$

Fig 6. Adjacent channel power ratio (5 MHz) as a function of output power; typical values

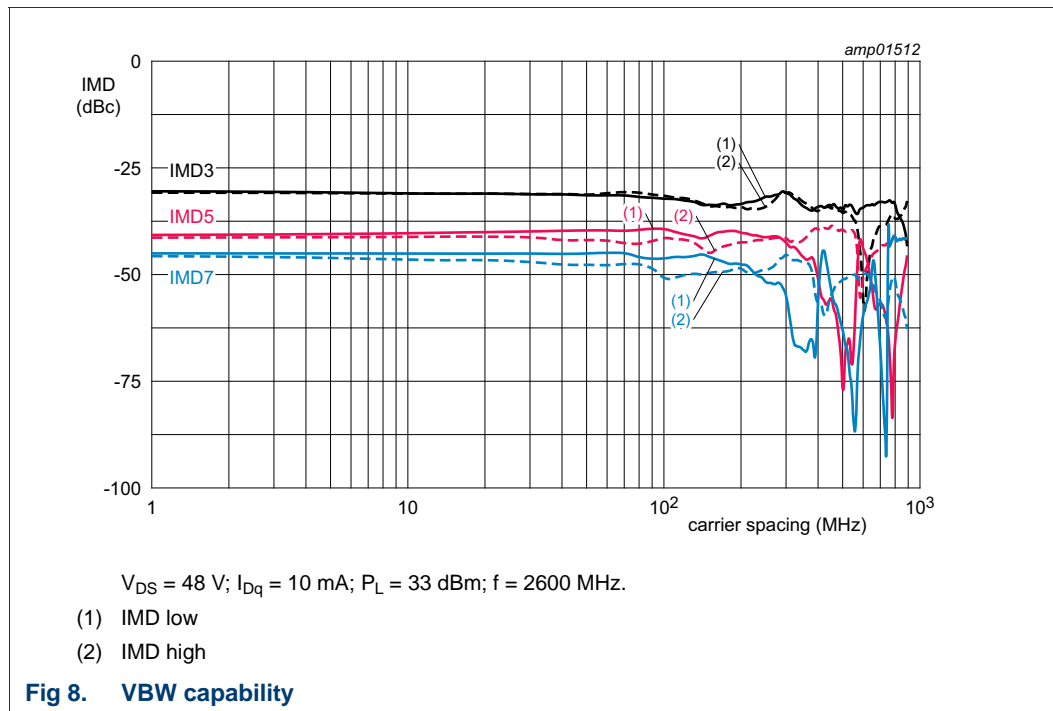


$V_{DS} = 48 \text{ V}$; $I_{DQ} = 10 \text{ mA}$.

- (1) $f = 2498.5 \text{ MHz}$
- (2) $f = 2600 \text{ MHz}$
- (3) $f = 2687.5 \text{ MHz}$

Fig 7. Peak-to-average power ratio as a function of output power; typical values

7.4.3 2-Tone VBW



8. Package outline

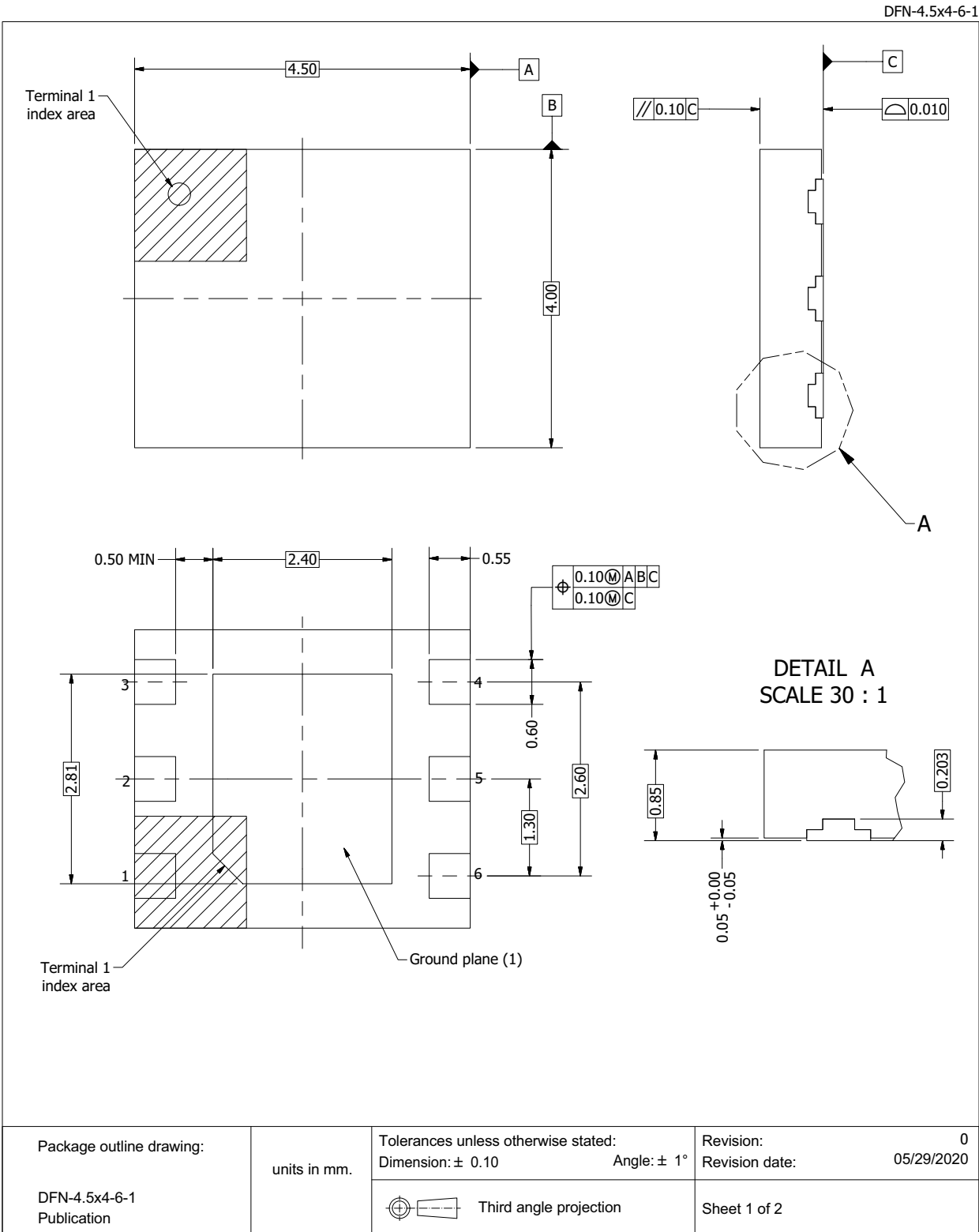


Fig 9. Package outline DFN-4.5x4-6-1 (sheet 1 of 2)

DFN-4.5x4-6-1

Drawing Notes	
Items	Description
(1)	Terminals (bottom View) and ground-plane (bottom View) are plated with matte Sn.
(2)	Plastic or metal protrusions of 0.075 mm max. per side are not included.

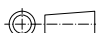
Package outline drawing: DFN-4.5x4-6-1 Publication	units in mm.	Tolerances unless otherwise stated: Dimension: ± 0.10	Revision: 0 Revision date: 05/29/2020
		 Third angle projection	Sheet 2 of 2

Fig 10. Package outline DFN-4.5x4-6-1 (sheet 2 of 2)

9. Handling information

CAUTION



This device is sensitive to ElectroStatic Discharge (ESD). Observe precautions for handling electrostatic sensitive devices.

Such precautions are described in the *ANSI/ESD S20.20*, *IEC/ST 61340-5*, *JESD625-A* or equivalent standards.

Table 10. ESD sensitivity

ESD model	Class
Charged Device Model (CDM); According to ANSI/ESDA/JEDEC standard JS-002	C1 [1] [3]
Human Body Model (HBM); According to ANSI/ESDA/JEDEC standard JS-001	0B [2] [4]

[1] CDM classification C1 is granted to any part that passes after exposure to an ESD pulse of 250 V.

[2] HBM classification 0B is granted to any part that passes after exposure to an ESD pulse of 125 V.

[3] The device passed CDM 400 V testing.

[4] The device passed HBM 200 V testing.

10. Abbreviations

Table 11. Abbreviations

Acronym	Description
3GPP	3rd Generation Partnership Project
CCDF	Complementary Cumulative Distribution Function
CW	Continuous Wave
DPCH	Dedicated Physical CHannel
GaN	Gallium Nitride
MTF	Median Time to Failure
PAR	Peak-to-Average Ratio
RoHS	Restriction of Hazardous Substances
SMD	Surface Mounted Device
VBW	Video BandWidth
VSWR	Voltage Standing Wave Ratio
W-CDMA	Wideband Code Division Multiple Access

11. Revision history

Table 12. Revision history

Document ID	Release date	Data sheet status	Change notice	Supersedes
C4H2350N05 v.1	20210708	Product data sheet	-	-

12. Legal information

12.1 Data sheet status

Document status ^{[1][2]}	Product status ^[3]	Definition
Objective [short] data sheet	Development	This document contains data from the objective specification for product development.
Preliminary [short] data sheet	Qualification	This document contains data from the preliminary specification.
Product [short] data sheet	Production	This document contains the product specification.

[1] Please consult the most recently issued document before initiating or completing a design.

[2] The term 'short data sheet' is explained in section "Definitions".

[3] The product status of device(s) described in this document may have changed since this document was published and may differ in case of multiple devices. The latest product status information is available on the Internet at URL <http://www.ampleon.com>.

12.2 Definitions

Draft — The document is a draft version only. The content is still under internal review and subject to formal approval, which may result in modifications or additions. Ampleon does not give any representations or warranties as to the accuracy or completeness of information included herein and shall have no liability for the consequences of use of such information.

Short data sheet — A short data sheet is an extract from a full data sheet with the same product type number(s) and title. A short data sheet is intended for quick reference only and should not be relied upon to contain detailed and full information. For detailed and full information see the relevant full data sheet, which is available on request via the local Ampleon sales office. In case of any inconsistency or conflict with the short data sheet, the full data sheet shall prevail.

Product specification — The information and data provided in a Product data sheet shall define the specification of the product as agreed between Ampleon and its customer, unless Ampleon and customer have explicitly agreed otherwise in writing. In no event however, shall an agreement be valid in which the Ampleon product is deemed to offer functions and qualities beyond those described in the Product data sheet.

12.3 Disclaimers

Maturity — The information in this document can only be regarded as final once the relevant product(s) has passed the Release Gate in Ampleon's release process. Prior to such release this document should be regarded as a draft version.

Limited warranty and liability — Information in this document is believed to be accurate and reliable. However, Ampleon does not give any representations or warranties, expressed or implied, as to the accuracy or completeness of such information and shall have no liability for the consequences of use of such information. Ampleon takes no responsibility for the content in this document if provided by an information source outside of Ampleon.

In no event shall Ampleon be liable for any indirect, incidental, punitive, special or consequential damages (including - without limitation - lost profits, lost savings, business interruption, costs related to the removal or replacement of any products or rework charges) whether or not such damages are based on tort (including negligence), warranty, breach of contract or any other legal theory.

Notwithstanding any damages that customer might incur for any reason whatsoever, Ampleon's aggregate and cumulative liability towards customer for the products described herein shall be limited in accordance with the *Terms and conditions of commercial sale* of Ampleon.

Right to make changes — Ampleon reserves the right to make changes to information published in this document, including without limitation specifications and product descriptions, at any time and without notice. This document supersedes and replaces all information supplied prior to the publication hereof.

Suitability for use — Ampleon products are not designed, authorized or warranted to be suitable for use in life support, life-critical or safety-critical systems or equipment, nor in applications where failure or malfunction of an Ampleon product can reasonably be expected to result in personal injury, death or severe property or environmental damage. Ampleon and its suppliers accept no liability for inclusion and/or use of Ampleon products in such equipment or applications and therefore such inclusion and/or use is at the customer's own risk.

Applications — Applications that are described herein for any of these products are for illustrative purposes only. Ampleon makes no representation or warranty that such applications will be suitable for the specified use without further testing or modification.

Customers are responsible for the design and operation of their applications and products using Ampleon products, and Ampleon accepts no liability for any assistance with applications or customer product design. It is customer's sole responsibility to determine whether the Ampleon product is suitable and fit for the customer's applications and products planned, as well as for the planned application and use of customer's third party customer(s). Customers should provide appropriate design and operating safeguards to minimize the risks associated with their applications and products.

Ampleon does not accept any liability related to any default, damage, costs or problem which is based on any weakness or default in the customer's applications or products, or the application or use by customer's third party customer(s). Customer is responsible for doing all necessary testing for the customer's applications and products using Ampleon products in order to avoid a default of the applications and the products or of the application or use by customer's third party customer(s). Ampleon does not accept any liability in this respect.

Limiting values — Stress above one or more limiting values (as defined in the Absolute Maximum Ratings System of IEC 60134) will cause permanent damage to the device. Limiting values are stress ratings only and (proper) operation of the device at these or any other conditions above those given in the Recommended operating conditions section (if present) or the Characteristics sections of this document is not warranted. Constant or repeated exposure to limiting values will permanently and irreversibly affect the quality and reliability of the device.

Terms and conditions of commercial sale — Ampleon products are sold subject to the general terms and conditions of commercial sale, as published at <http://www.ampleon.com/terms>, unless otherwise agreed in a valid written individual agreement. In case an individual agreement is concluded only the terms and conditions of the respective agreement shall apply. Ampleon hereby expressly objects to applying the customer's general terms and conditions with regard to the purchase of Ampleon products by customer.

No offer to sell or license — Nothing in this document may be interpreted or construed as an offer to sell products that is open for acceptance or the grant, conveyance or implication of any license under any copyrights, patents or other industrial or intellectual property rights.

Export control — This document as well as the item(s) described herein may be subject to export control regulations. Export might require a prior authorization from competent authorities.

Non-automotive qualified products — Unless this data sheet expressly states that this specific Ampleon product is automotive qualified, the product is not suitable for automotive use. It is neither qualified nor tested in accordance with automotive testing or application requirements. Ampleon accepts no liability for inclusion and/or use of non-automotive qualified products in automotive equipment or applications.

In the event that customer uses the product for design-in and use in automotive applications to automotive specifications and standards, customer (a) shall use the product without Ampleon's warranty of the product for such

automotive applications, use and specifications, and (b) whenever customer uses the product for automotive applications beyond Ampleon's specifications such use shall be solely at customer's own risk, and (c) customer fully indemnifies Ampleon for any liability, damages or failed product claims resulting from customer design and use of the product for automotive applications beyond Ampleon's standard warranty and Ampleon's product specifications.

Translations — A non-English (translated) version of a document is for reference only. The English version shall prevail in case of any discrepancy between the translated and English versions.

12.4 Trademarks

Notice: All referenced brands, product names, service names and trademarks are the property of their respective owners.

13. Contact information

For more information, please visit: <http://www.ampleon.com>

For sales office addresses, please visit: <http://www.ampleon.com/sales>

14. Contents

1	Product profile	1
1.1	General description	1
1.2	Features and benefits	1
1.3	Applications	1
2	Pinning information	2
2.1	Pinning	2
2.2	Pin description	2
3	Ordering information	2
4	Limiting values	3
5	Thermal characteristics	3
6	Characteristics	3
7	Test information	4
7.1	Ruggedness in class-AB operation	4
7.2	Impedance information	4
7.3	Test circuit	5
7.4	Graphical data	6
7.4.1	Pulsed CW	6
7.4.2	1-Carrier W-CDMA	7
7.4.3	2-Tone VBW	8
8	Package outline	9
9	Handling information	11
10	Abbreviations	11
11	Revision history	11
12	Legal information	12
12.1	Data sheet status	12
12.2	Definitions	12
12.3	Disclaimers	12
12.4	Trademarks	13
13	Contact information	13
14	Contents	14

Please be aware that important notices concerning this document and the product(s) described herein, have been included in section 'Legal information'.

© Ampleon Netherlands B.V. 2021.

All rights reserved.

For more information, please visit: <http://www.ampleon.com>

For sales office addresses, please visit: <http://www.ampleon.com/sales>

Date of release: 8 July 2021

Document identifier: C4H2350N05