

DATASHEET

# Lepida

SR4L054 • lamiiANT<sup>®</sup>



## Features

- Lepida is a high performance antenna for 5G, 4G and LTE applications
- The antenna supports the following bands: B71 (617-698 MHz), LTE 700, GSM850, GSM900, DCS1800, PCS1900, WCDMA2100, B7 (2500-2690 MHz), B40 (2300 – 2400 MHz), B78 (3300-3800MHz)
- Lepida's unique design delivers high efficiency across all bands: DFI (Designed for Integration)
- This antenna is especially suitable for applications demanding the highest performance and/or high reliability applications e.g. automotive and aerospace
- The robust design ensures excellent coplanarity and is very resistant to bow and twist during re-flow.
- Dimensions: (50.6 x 10.6 x 3.3)
- Surface Mount Device (SMD) supplied in Tape & Reel
- ROHS and REACH Compliant

# Contents

|            |  |           |
|------------|--|-----------|
| <b>1.</b>  | <b>Description</b>                               | <b>2</b>  |
| <b>2.</b>  | <b>Applications</b>                              | <b>2</b>  |
| <b>3.</b>  | <b>General data</b>                              | <b>2</b>  |
| <b>4.</b>  | <b>Part number</b>                               | <b>3</b>  |
| <b>5.</b>  | <b>RF characteristics</b>                        | <b>3</b>  |
| <b>6.</b>  | <b>RF performance</b>                            | <b>4</b>  |
| 6.1.       | Return loss                                      | 4         |
| 6.2.       | VSWR   | 4         |
| 6.3.       | Efficiency                                       | 5         |
| 6.4.       | Antenna pattern                                  | 6         |
| <b>7.</b>  | <b>Antenna dimensions</b>                        | <b>13</b> |
| <b>8.</b>  | <b>Schematic symbol and pin definition</b>       | <b>14</b> |
| <b>9.</b>  | <b>Antenna footprint</b>                         | <b>14</b> |
| <b>10.</b> | <b>Electrical interface</b>                      | <b>15</b> |
| 10.1.      | Transmission line                                | 15        |
| 10.2.      | Matching circuit                                 | 15        |
| <b>11.</b> | <b>Antenna integration guide</b>                 | <b>16</b> |
| 11.1.      | Antenna placement                                | 16        |
| 11.2.      | Host PCB layout                                  | 16        |
| 11.3.      | Host PCB clearance                               | 17        |
| <b>12.</b> | <b>Reference board</b>                           | <b>18</b> |
| 12.1.      | Reference board matching circuit                 | 18        |
| <b>13.</b> | <b>Soldering</b>                                 | <b>19</b> |
| <b>14.</b> | <b>Hazardous material regulation conformance</b> | <b>19</b> |
| <b>15.</b> | <b>Packaging</b>                                 | <b>19</b> |
| 15.1.      | Optimal storage conditions                       | 19        |
| 15.2.      | Tape characteristics                             | 20        |
| 15.3.      | Reel dimensions                                  | 21        |
| 15.4.      | Box dimensions                                   | 21        |
| 15.5.      | Bag properties                                   | 22        |
| 15.6.      | Reel label information                           | 22        |

## 1. Description

The Lepida wide-band 5G/4G antenna is part of Antenova's lamiiANT family of surface mount antennas. Lepida's unique design delivers the highest efficiency across a 600MHz to 3800MHz spectrum. Lepida requires a ground plane on the host PCB to radiate effectively and the antenna itself requires a clearance underneath. Depending on the device environment, Lepida requires an external matching circuit to tune the antenna within the target device. Antenova provides a matching service to assist our customers optimise antenna efficiency, for further details please contact your local Antenova office.

The device comes supplied on tape and reel for ease of manufacturing via pick and place.

## 2. Applications

Lepida is ideally suited to applications demanding the highest performance and/or high reliability applications including:

- Automotive
- Aerospace/UAVs
- Smart metering
- Remote monitoring
- 5G router

## 3. General data

|                              |   |
|------------------------------|---|
| FREQUENCY                    | 617 – 698 MHz<br>698 – 798 MHz<br>824 – 960 MHz<br>1710 – 2170 MHz<br>2300 – 2400 MHz<br>2500 – 2690 MHz<br>3300 – 3800 MHz |
| POLARIZATION                 | Linear  |
| OPERATING TEMPERATURE        | -40°C to 140°C  |
| ENVIRONMENTAL CONDITION TEST | ISO16750-4 5.1.1.1/5.1.2.1/5.3.2  |
| IMPEDANCE WITH MATCHING      | 50 $\Omega$   |
| WEIGHT                       | 4.0g  |
| ANTENNA TYPE                 | SMD   |
| DIMENSIONS                   | 50.6 x 10.6 x 3.3 (mm)  |

## 4. Part number

LEPIDA  
SR4L054



## 5. RF characteristics

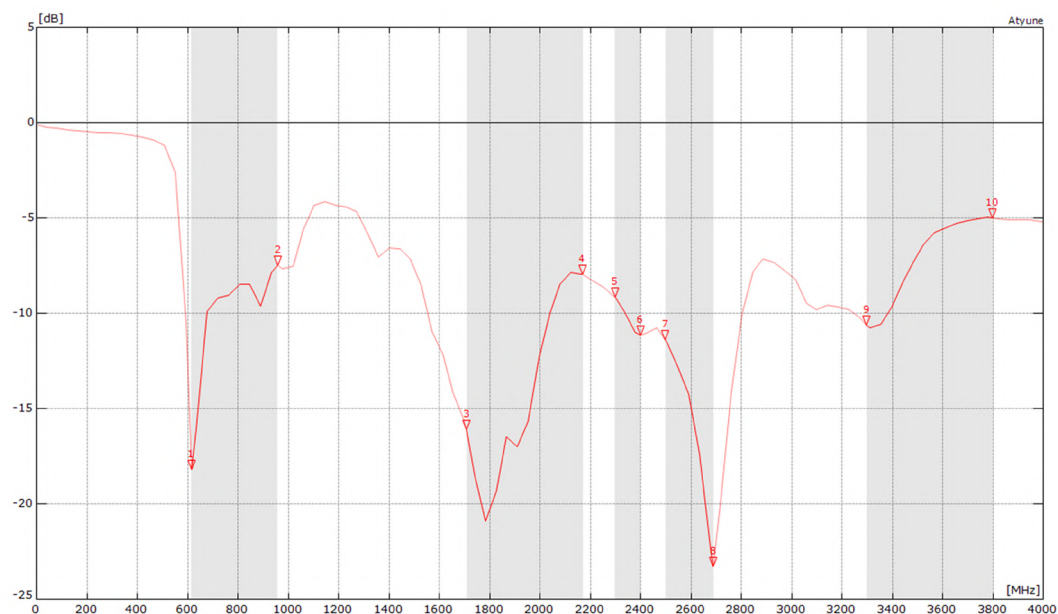
|                       | 617-798MHZ | 824-960MHZ | 1710-2170MHZ |
|-----------------------|------------|------------|--------------|
| PEAK GAIN             | 0.50dBi    | 1.00dBi    | 2.50dBi      |
| AVERAGE GAIN (LINEAR) | -1.50dBi   | -1.50dBi   | -1.50dBi     |
| AVERAGE EFFICIENCY    | >55%       | >65%       | >65%         |
| MAXIMUM RETURN LOSS   | -6dB       | -6dB       | -6dB         |
| MAXIMUM VSWR          | 2.2:1      | 2.5:1      | 2.5:1        |

|                       | 2300-2400MHZ | 2500-2690MHZ | 3300-3800MHZ |
|-----------------------|--------------|--------------|--------------|
| PEAK GAIN             | 1.60dBi      | 0.50dBi      | 1.00dBi      |
| AVERAGE GAIN (LINEAR) | -2.00dBi     | -1.50dBi     | -1.50dBi     |
| AVERAGE EFFICIENCY    | >65%         | >65%         | >65%         |
| MAXIMUM RETURN LOSS   | -10dB        | -10dB        | -5dB         |
| MAXIMUM VSWR          | 2.1:1        | 1.8:1        | 3.8:1        |

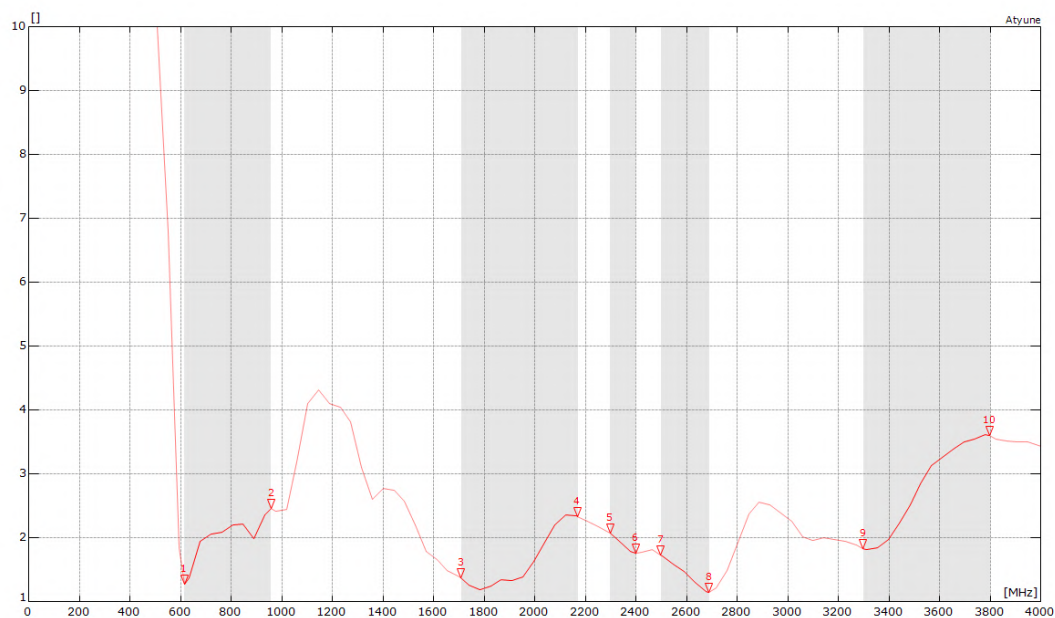
All data measured on Antenova's evaluation PCB Part  
No. SR4L054-EVB-2

## 6. RF performance

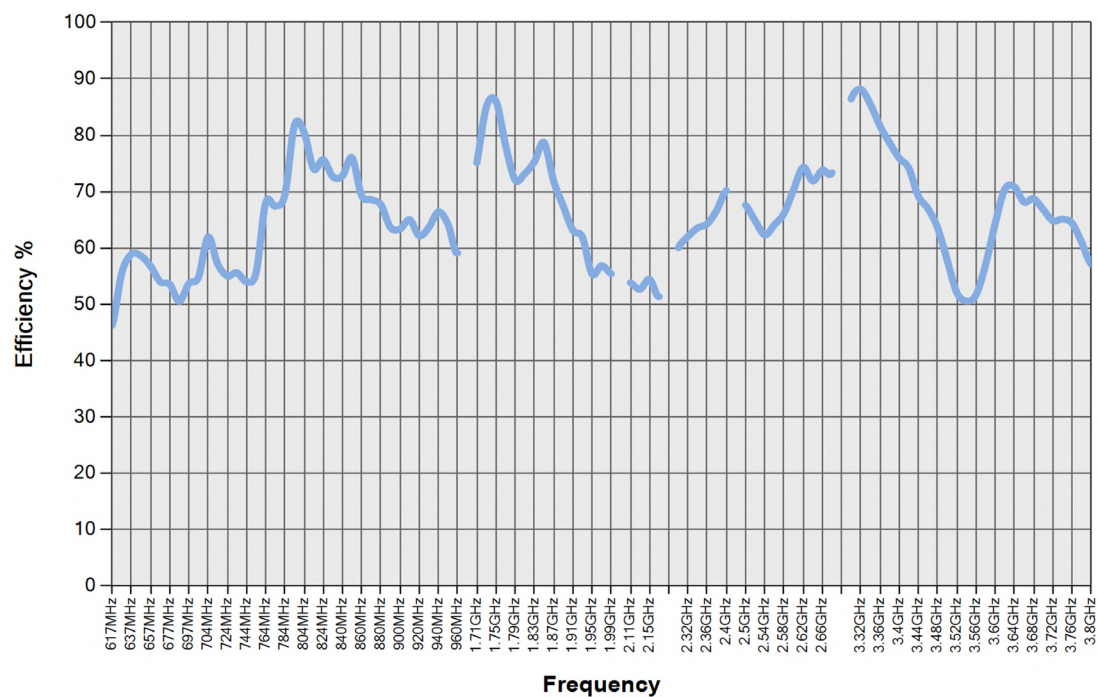
### 6.1. Return loss



### 6.2. VSWR

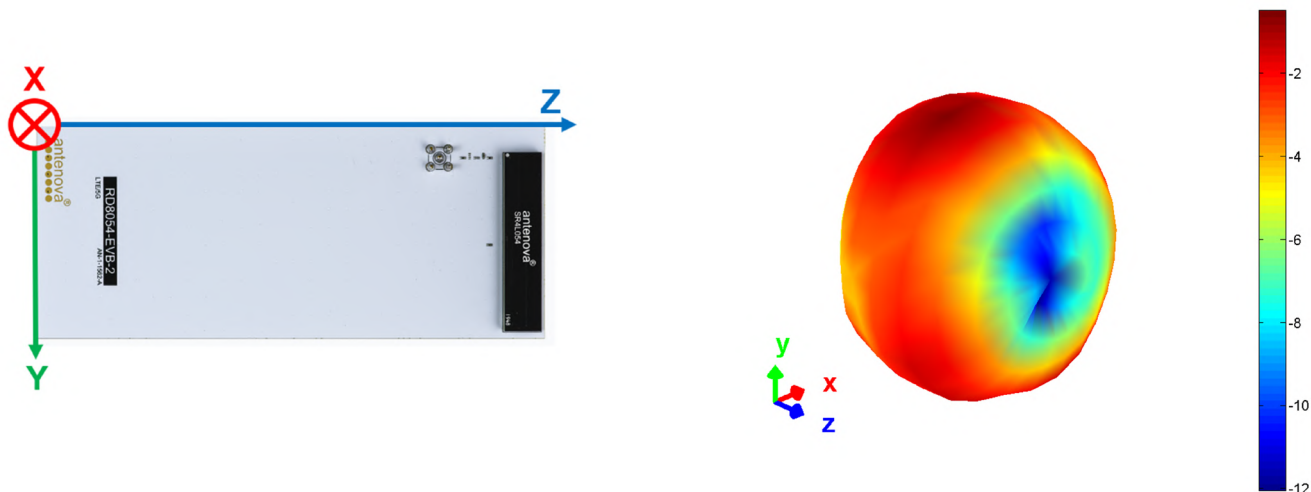


### 6.3. Efficiency

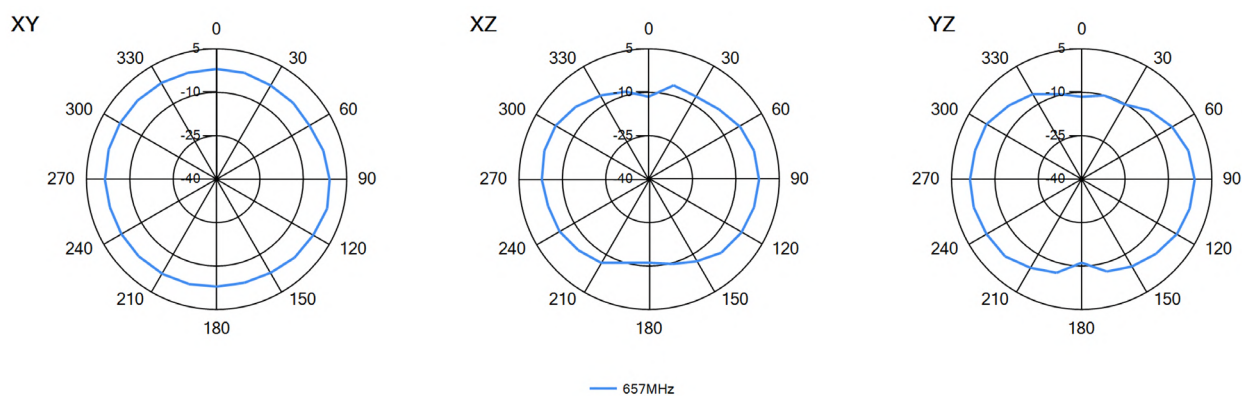


## 6.4. Antenna pattern

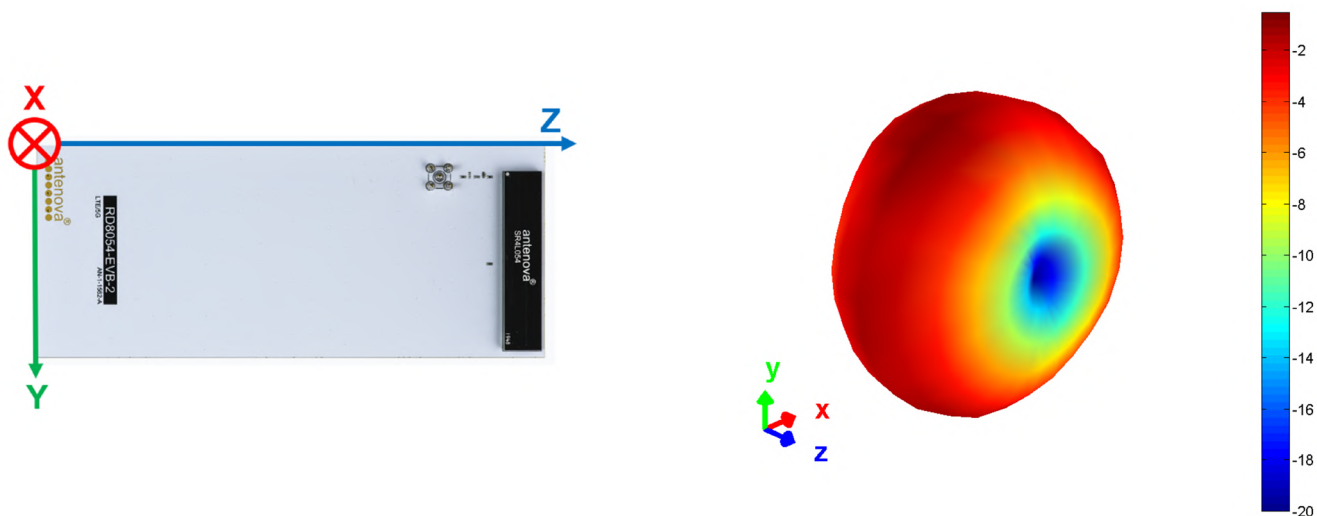
### 6.4.1. 617 MHz – 698MHz



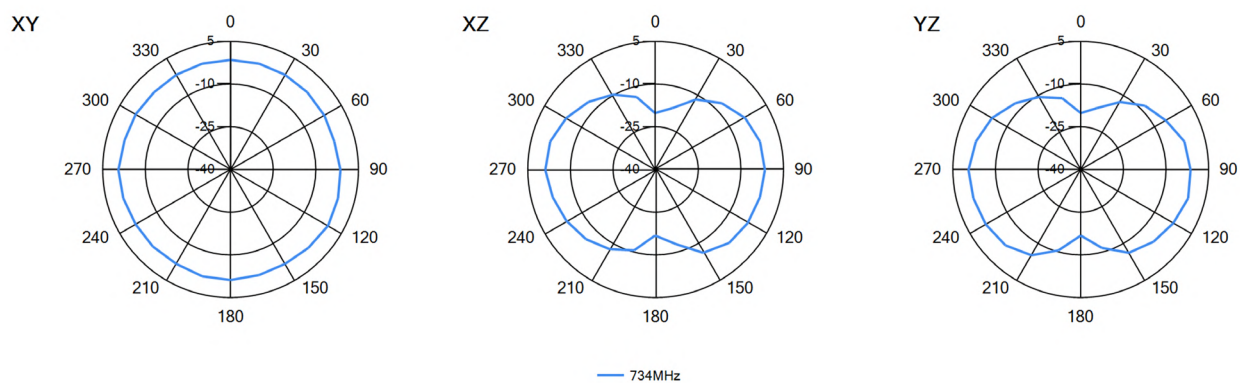
3D pattern at 657MHz



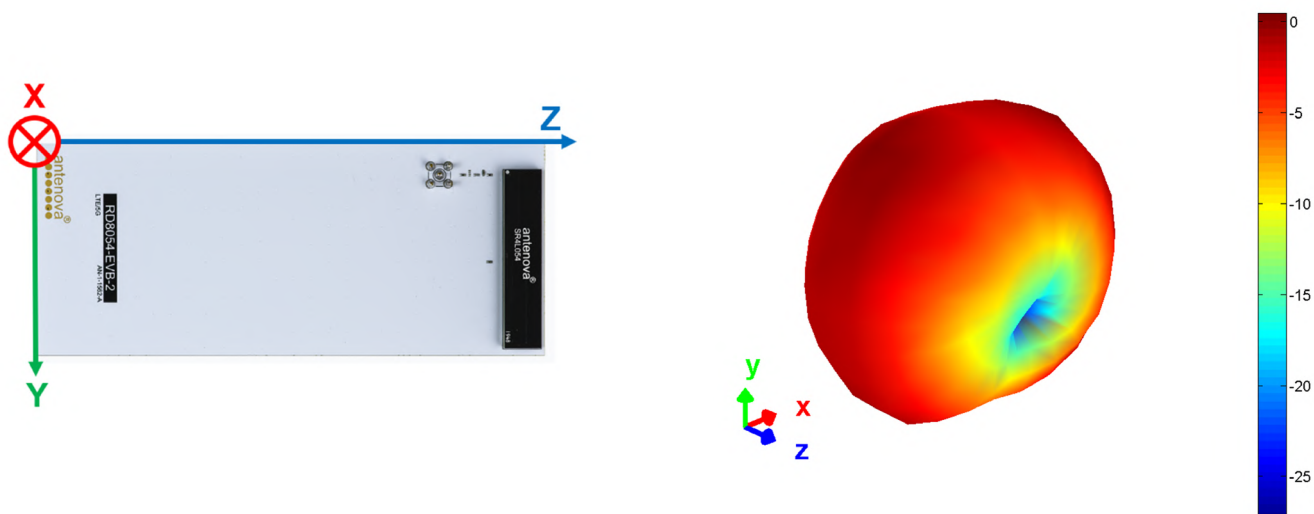
## 6.4.2. 698 MHz – 798 MHz



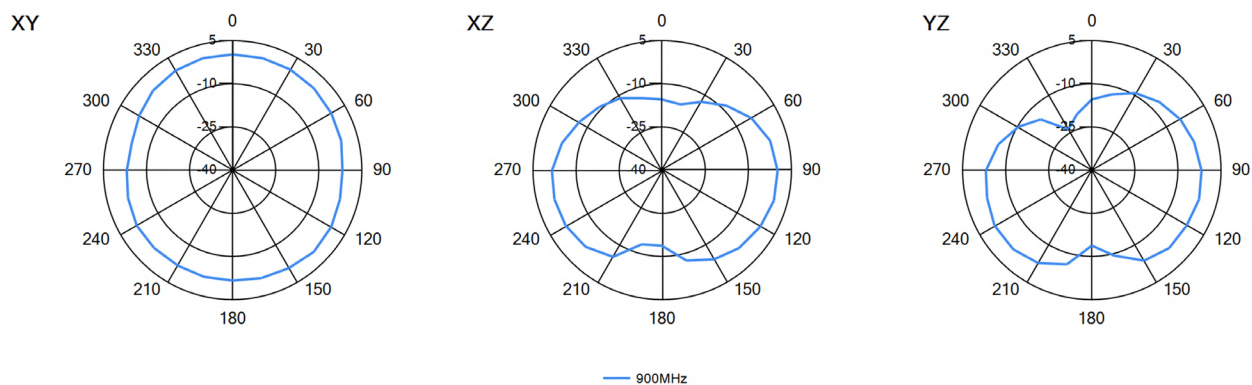
3D pattern at 734MHz



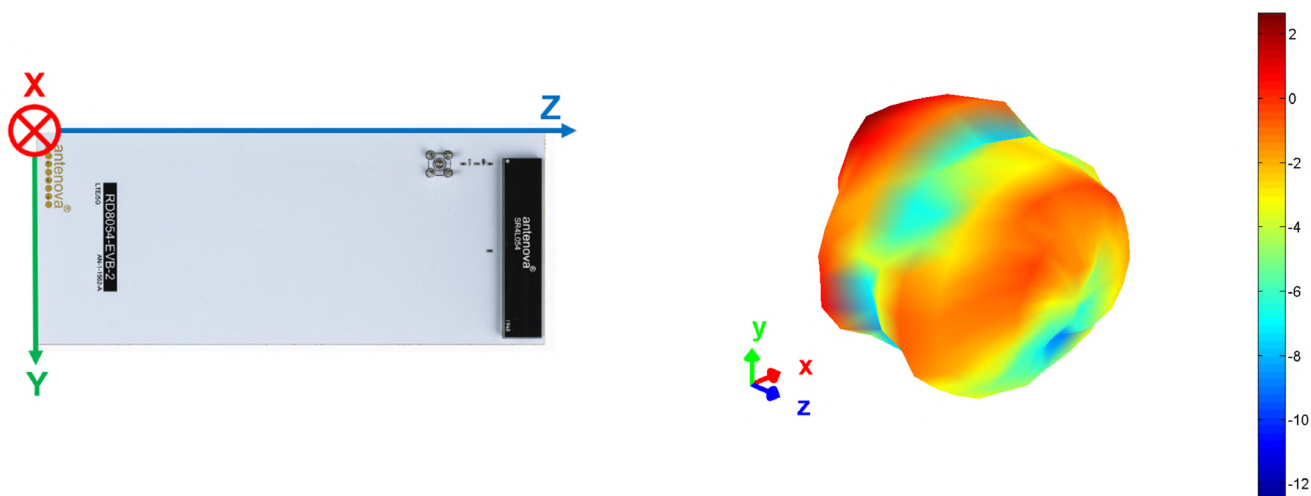
## 6.4.3. 824 MHz – 960 MHz



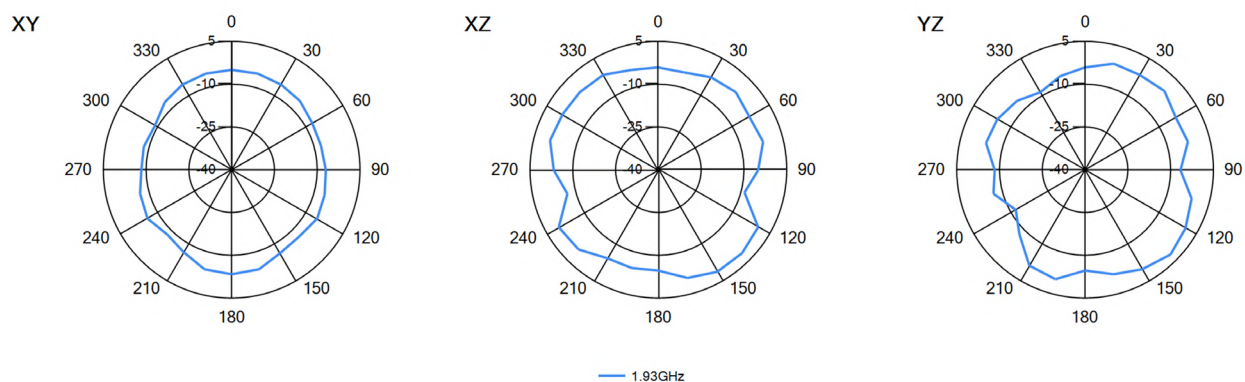
3D pattern at 900MHz



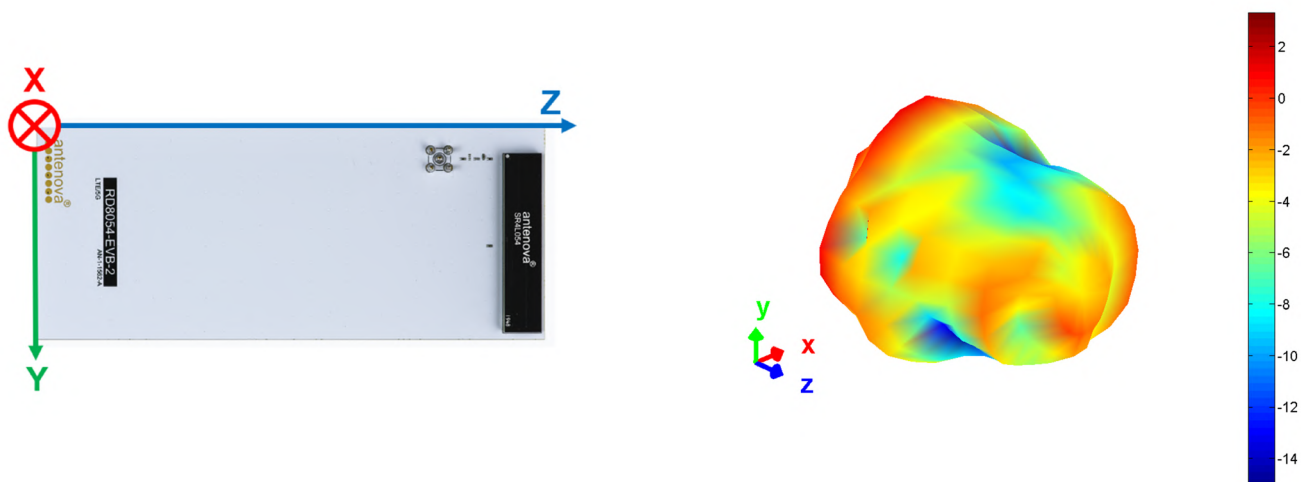
## 6.4.4. 1710 MHz – 2170 MHz



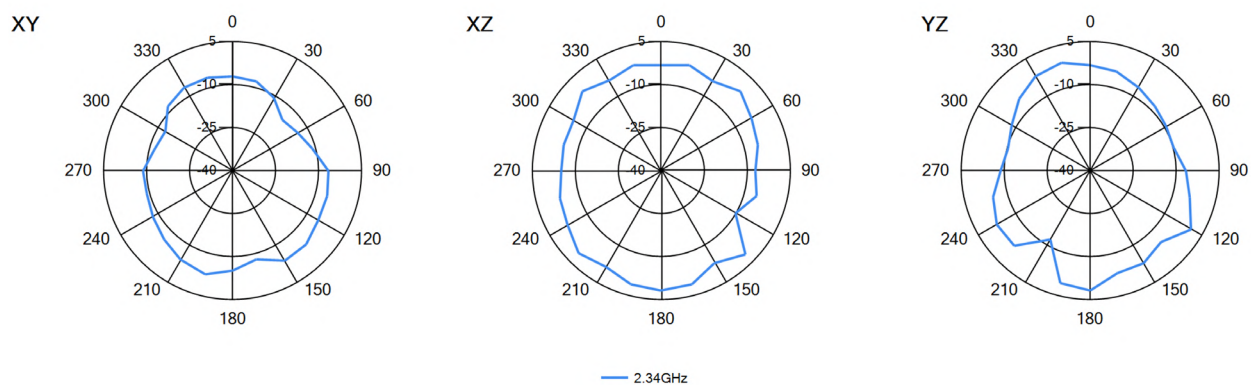
3D pattern at 1930MHz



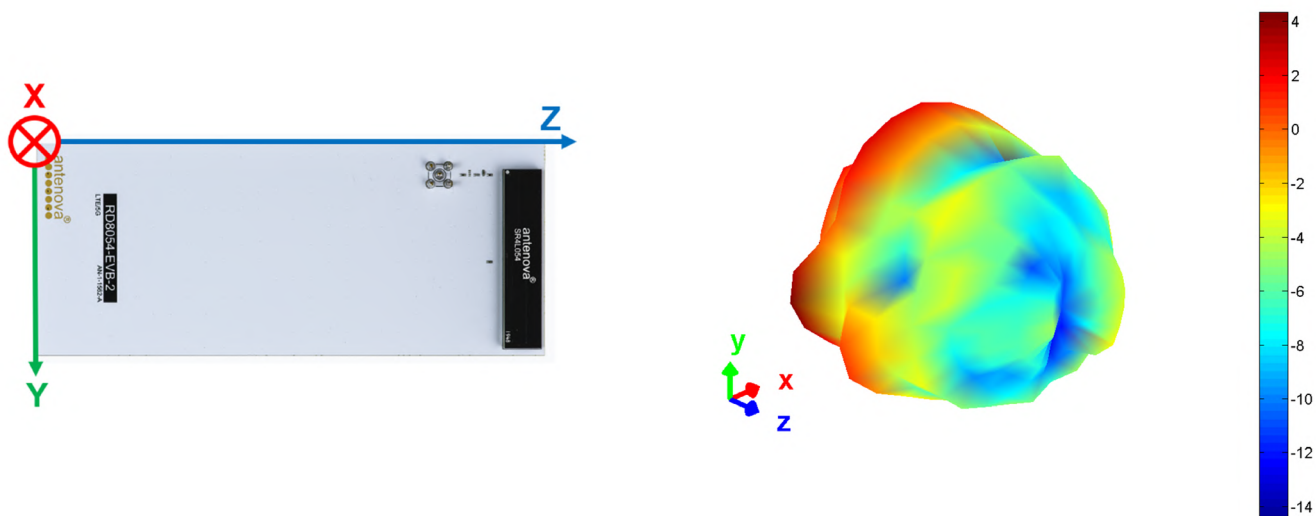
## 6.4.5. 2300 MHz – 2400 MHz



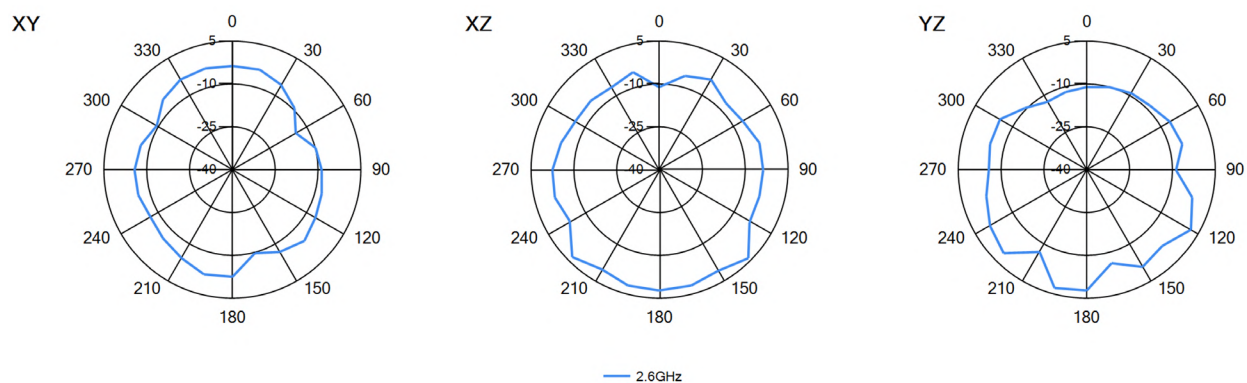
3D pattern at 2340MHz



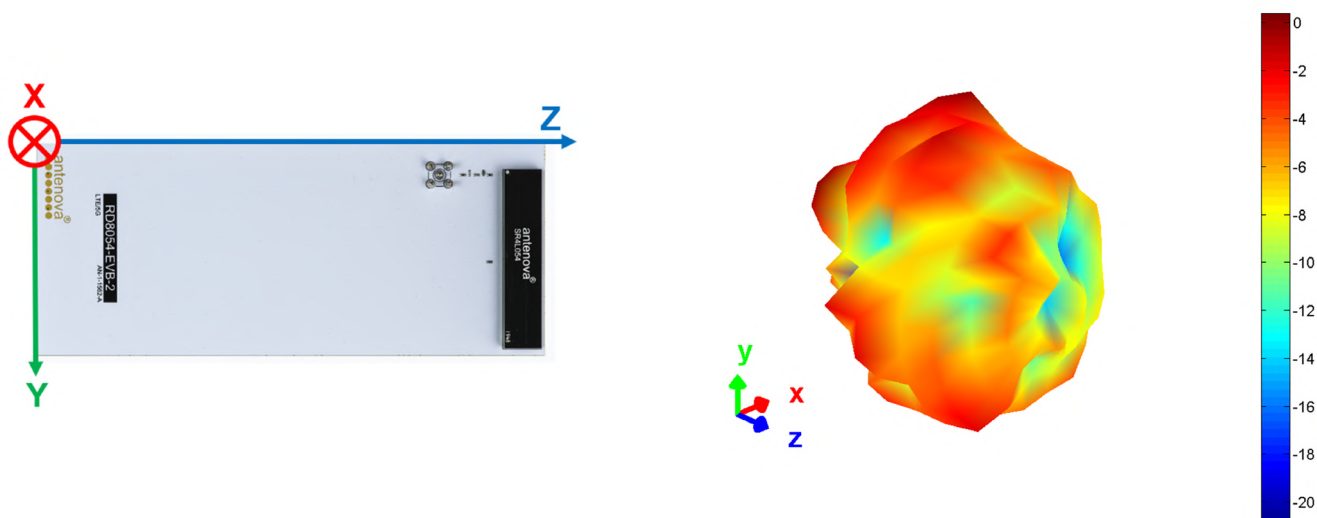
## 6.4.6. 2500 MHz – 2690 MHz



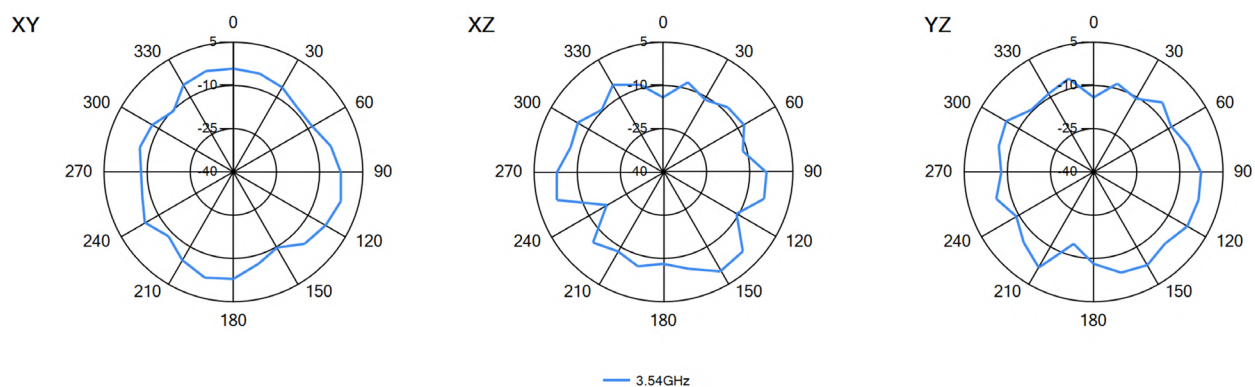
3D pattern at 2600MHz



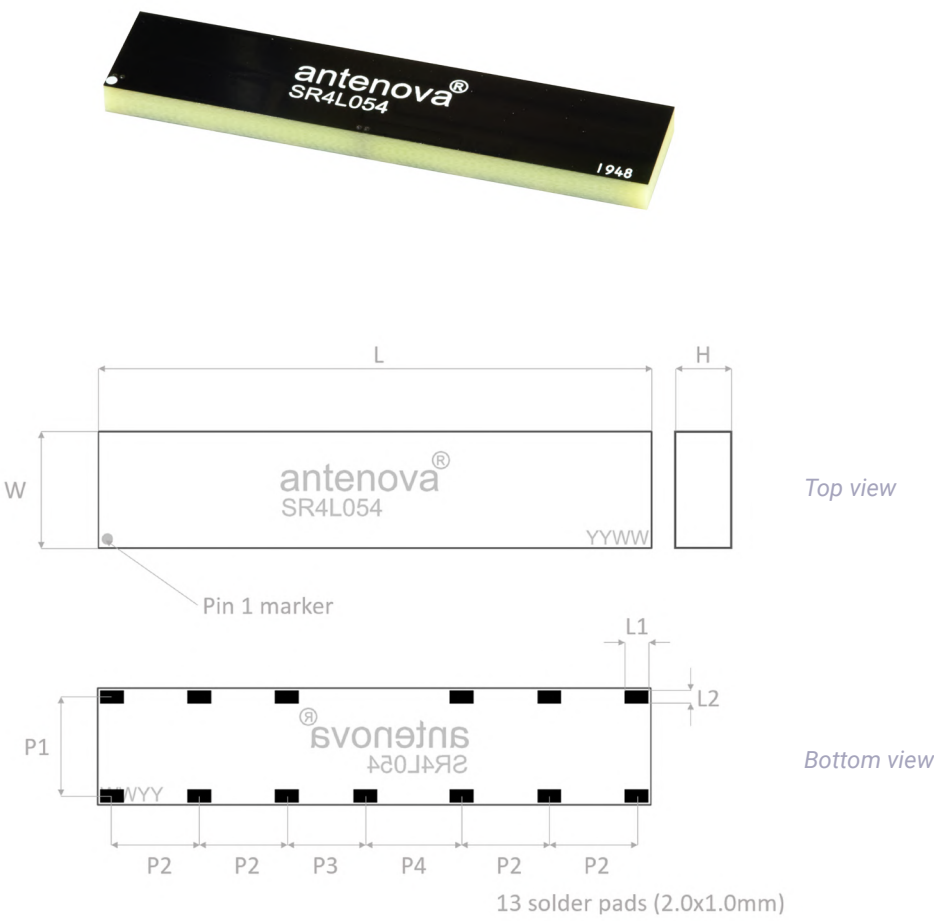
## 6.4.7. 3300 MHz – 3800 MHz



3D pattern at 3540MHz



7. Antenna dimensions



| L          | W          | H         |
|------------|------------|-----------|
| Length     | Width      | Height    |
| 50.6 ± 0.1 | 10.6 ± 0.1 | 3.3 ± 0.1 |

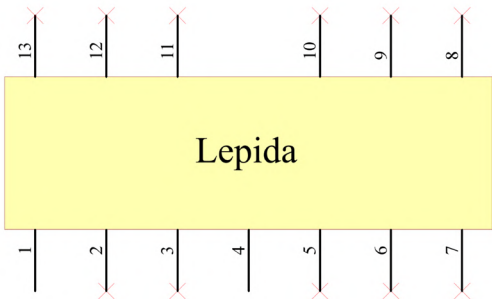
| L1  | L2  | P1  | P2  | P3  | P4  |
|-----|-----|-----|-----|-----|-----|
| 2.0 | 1.0 | 9.0 | 8.0 | 7.2 | 9.0 |

All dimensions in (mm)

## 8. Schematic symbol and pin definition

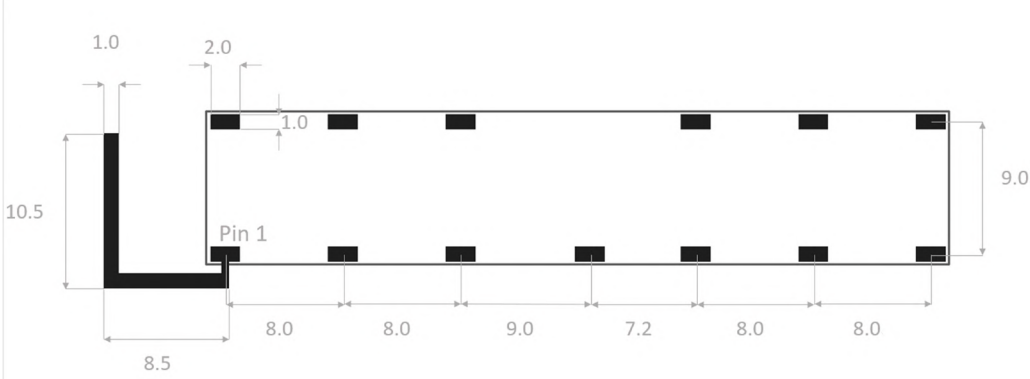
The circuit symbol for the antenna is shown below. The antenna has 13 pins with only two as functional. All other pins are for mechanical strength.

| PIN                                     | DESCRIPTION                   |
|---|-------------------------------|
| 1                                       | Feed                          |
| 4                                       | Return/GND                    |
| 2, 3, 5, 6, 7, 8,<br>9, 10, 11, 12, 13, | Not used<br>(Mechanical only) |



## 9. Antenna footprint

The recommended host PCB footprint is below.



13 copper pads all 2.0 x 1.0 (mm)

## 10. Electrical interface

### 10.1. Transmission line

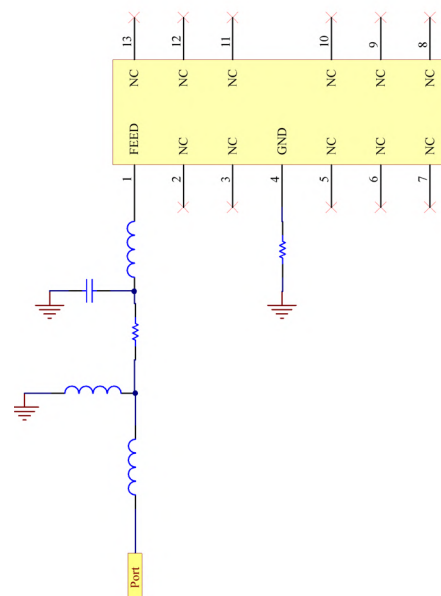
All transmission lines should be designed to have a characteristic impedance of 50Ω.

- The length of the transmission lines should be kept to a minimum
- Any other parts of the RF system like transceivers, power amplifiers, etc, should also be designed to have an impedance of 50 Ω

Once the material for the PCB has been chosen (PCB thickness and dielectric constant), a coplanar transmission line can easily be designed using any of the commercial software packages that are available for transmission line design. For the chosen PCB thickness, copper thickness and substrate dielectric constant, the program will calculate the appropriate transmission line width and gaps on either side of the track so that the characteristic impedance of the co-planar transmission is 50 Ω.

### 10.2. Matching circuit

The antenna requires a matching circuit that must be optimized for each product. The matching circuit will require up to six components and the following circuit should be designed into the host PCB. Not all components may be required but should be included as a precaution. The matching network should be placed close to the antenna feed to ensure it is optionally effective in tuning the antenna.



## 11. Antenna integration guide

### 11.1. Antenna placement

Whatever size the host PCB is, the antenna should be ideally placed on the host PCB's shortest edge with the longest GND.

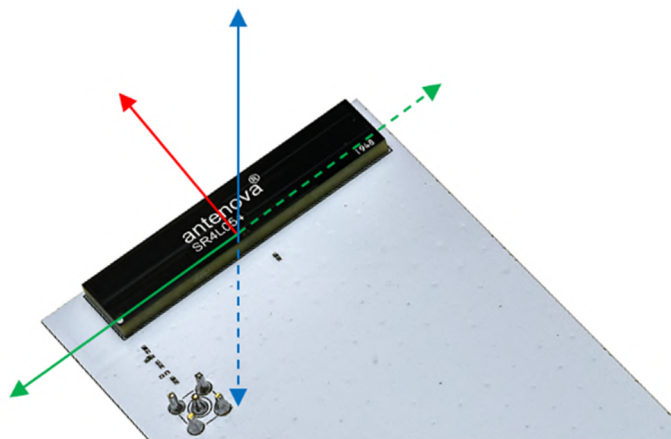
Ideally the antenna requires clearance in 5 spatial directions as shown below. Where this cannot be achieved you should keep as many clear as possible and no less than 3. Please note performance will degrade with less clearances.



Correct

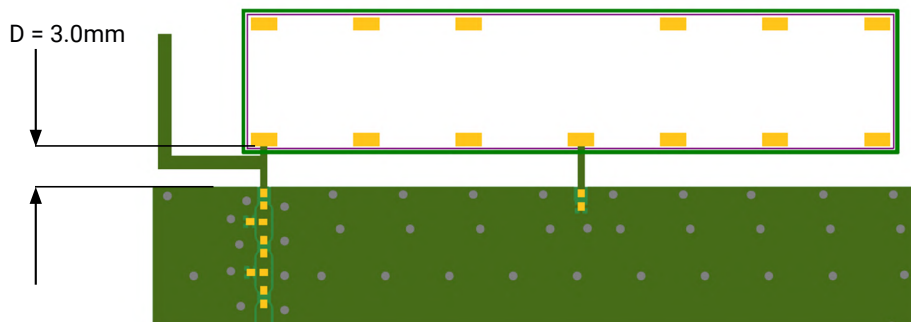


Incorrect



### 11.2. Host PCB layout

The host PCB must allow that the footprint and clearance meets the antenna specification. This example of a PCB layout shows the antenna footprint with clearance.



Example host layout

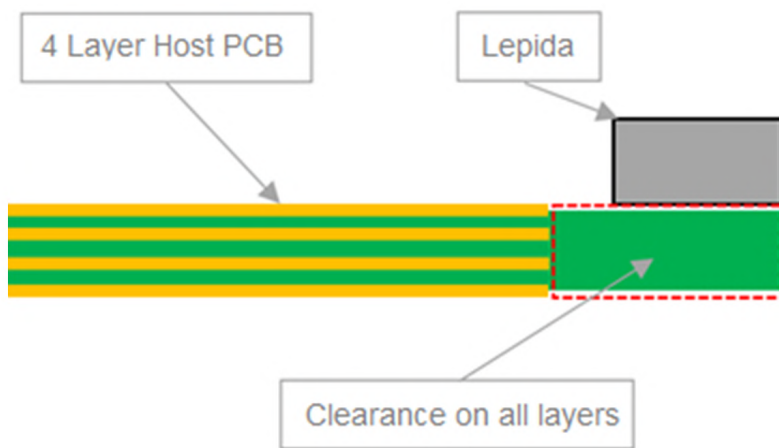
The distance D is the gap required from the antenna SMD pad edge to the ground plane. This should be maintained along the edge the antenna is placed.

### 11.3. Host PCB clearance

---

The diagram below shows the antenna footprint and clearance through all layers on the PCB. Only the antenna pads and connections to feed and GND are present within this clearance area.

Placement of components and GND with traces adjacent to the antenna should maintain a minimum clearance of 15mm from either side. The antenna should therefore be placed in the corner to only have one side affected.



## 12. Reference board

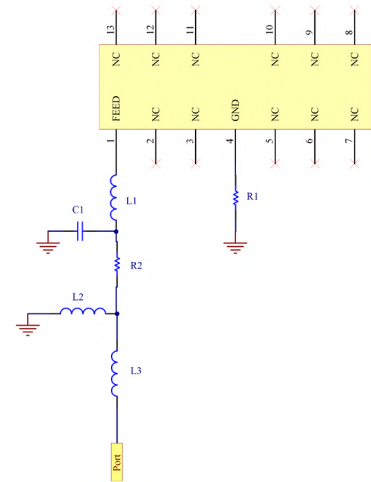
The reference board has been designed for evaluation purposes of SR4L054 and includes an SMA female connector.

To order a reference board  
please see [antenova.com](http://antenova.com)



### 12.1. Reference board matching circuit

| DESIGNATOR | TYPE      | VALUE | DESCRIPTION           |
|------------|-----------|-------|-----------------------|
| C1         | Capacitor | 0.5pF | Maruta GJM15 series   |
| L2         | Inductor  | 10nH  | Murata LQG15HN series |
| L3         | Inductor  | 1.5nH | Murata LQG15HN series |
| L1, R1, R2 | Resistor  | 0Ω    | Any                   |



## 13. Soldering

---

This antenna is suitable for lead free soldering. The reflow profile should be adjusted to suit the device, oven and solder paste, while observing the following conditions:

- The maximum temperature should not exceed 240 °C
- For lead free soldering, a maximum temperature of 255 °C for no more than 20 seconds is permitted.
- The antenna should not be exposed to temperatures exceeding 120 °C more than 3 times during the soldering process.

## 14. Hazardous material regulation conformance

---

The antenna has been tested to conform to RoHS requirements. A certificate of conformance is available from Antenova's website.

## 15. Packaging

---

### 15.1. Optimal storage conditions

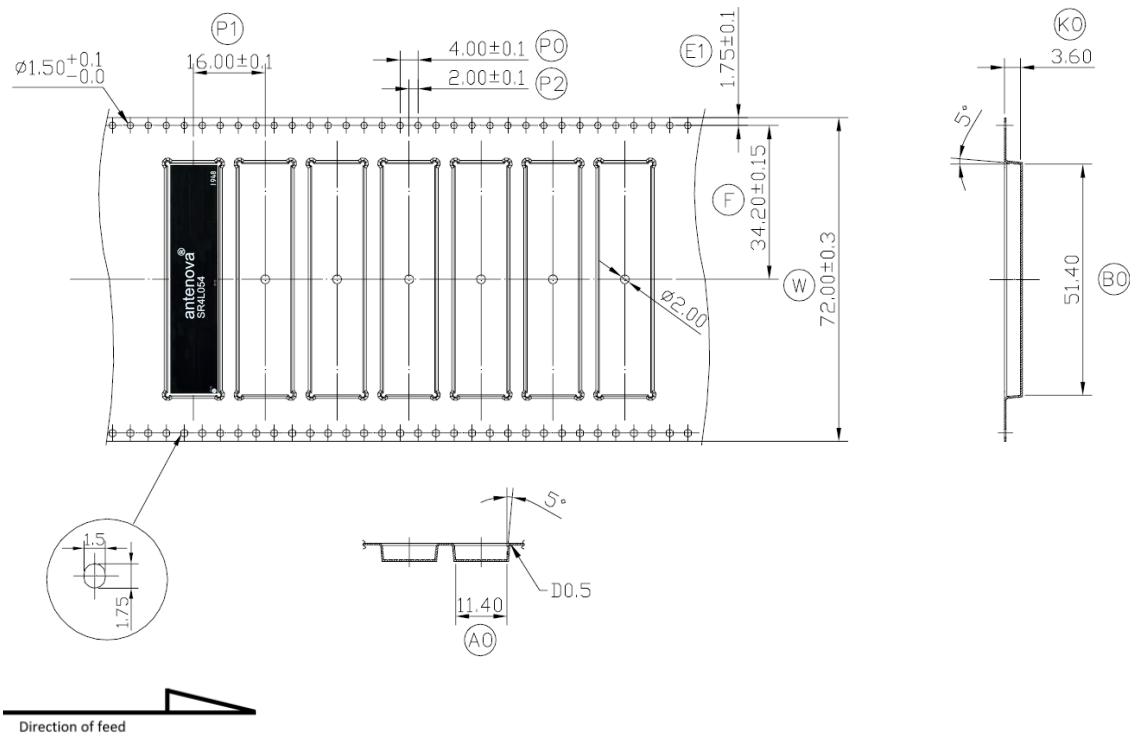
---

|               |   |
|---------------|---|
| TEMPERATURE   | -10°C to 40°C   |
| HUMIDITY      | Less than 75% RH  |
| SHELF LIFE    | 24 Months   |
| STORAGE PLACE | Away from corrosive gas and direct sunlight                                 |
| PACKAGING     | Reels should be stored in unopened sealed manufacturer's plastic packaging. |

Note: Storage of open reels of antennas is not recommended due to possible oxidization of pads on antennas. If short term storage is necessary, then it is highly recommended that the bag containing the antenna reel is re-sealed and stored in conditions as described in the table above.

The shelf life of the antenna is 2 years provided the factory seal on the package has not been broken.

15.2. Tape characteristics



| Ko         | Ao          | Bo          | P0         | P1          | P2         |
|------------|-------------|-------------|------------|-------------|------------|
| 3.60 ± 0.1 | 11.40 ± 0.1 | 51.40 ± 0.1 | 4.00 ± 0.1 | 16.00 ± 0.1 | 2.00 ± 0.1 |

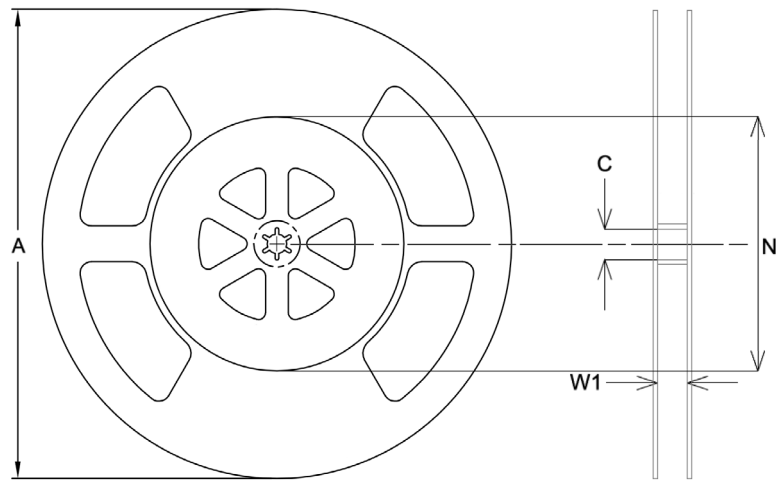
| E1         | F            | W           |
|------------|--------------|-------------|
| 1.75 ± 0.1 | 34.20 ± 0.15 | 72.00 ± 0.3 |

All dimensions in (mm)

Notes:

- 1. Material: PS Black – Thickness: 0.40 ± 0.05mm.
- 2. Packaging length per 22" reel: 53 Meters (1:6).
- 3. Component load per 13" reel: 500pcs

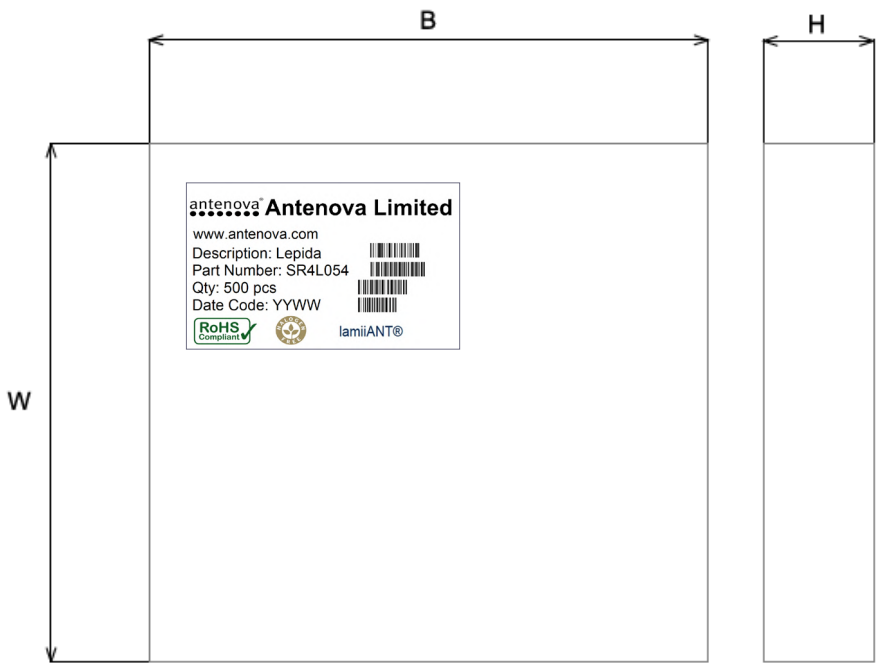
15.3. Reel dimensions



| A           | C          | N           | W1         |
|-------------|------------|-------------|------------|
| 329.0 ± 1.5 | 13.3 ± 0.5 | 178.0 ± 1.5 | 73.0 ± 1.0 |

All dimensions in (mm)

15.4. Box dimensions



| WIDTH (W) | BREADTH (B) | HEIGHT (H) |
|-----------|-------------|------------|
| 351mm     | 349mm       | 75mm       |

### 15.5. Bag properties

---

Reels are supplied in protective plastic packaging.

### 15.6. Reel label information

---



### Quality statements

Antenova's products conform to REACH and RoHS legislation. For our statements regarding these and other quality standards, please see [antenova.com](http://antenova.com).



Antenova reserves all rights to the contents of this document. Antenova gives no warranties based solely on the accuracy or completeness of the contents of this document and reserves the right to make changes to the specifications of the products described herein at any time and without notice.

# Antenna design, integration and test resources

Product designers – the details contained in this datasheet will help you to complete your embedded antenna design. Please follow our technical advice carefully to obtain optimum antenna performance.

It is our goal that every one of our customers creates a high performing wireless product using Antenova's antennas. You will find a wealth of design resources, calculators and case studies to aid your design on our website.

Antenova's design laboratories are equipped with the latest antenna design tools and test chambers. We provide antenna design, test and technical integration services to help you complete your design and obtain the required certifications.

If you cannot find the antenna you require in our product range, please contact us to discuss creating a bespoke antenna to meet your requirement exactly.

Share knowledge with RF experts around the world.

**ask.antenova** is a global forum for designers and engineers working with wireless technology.

VISIT [ASK.ANTENOVA](http://ASK.ANTENOVA)

Visit [antenova.com](http://antenova.com)

Order antenna samples and evaluation boards, and read our antenna resources

VISIT [ANTENOVA.COM](http://ANTENOVA.COM)

Request a quotation for antennas by volume:

[sales@antenova.com](mailto:sales@antenova.com)

Global headquarters

**Antenova Ltd, 2nd Floor Titan Court, 3 Bishop Square, Hatfield, AL10 9NA**

**+44 (0) 1223 810600**