

A 1,5 -12 - Ferrule

3202588

<https://www.phoenixcontact.com/us/products/3202588>



Please be informed that the data shown in this PDF document is generated from our online catalog. Please find the complete data in the user documentation. Our general terms of use for downloads are valid.



Ferrule, Length contact range: 12 mm, sleeve length: 12 mm, color: silver

Your advantages

- The insulation reliability of close connections is increased and the splicing of wires is prevented
- The dimensions of the ferrules conform to DIN 46228-1
- The ferrules without plastic sleeve are made from soft tin-plated electrolytic copper

Commercial data

Item number	3202588
Packing unit	1,000 pc
Minimum order quantity	1,000 pc
Sales key	BH34
Product key	BH3412
Catalog page	Page 480 (C-3-2019)
GTIN	4017918161736
Weight per piece (including packing)	0.1 g
Weight per piece (excluding packing)	0.1 g
Customs tariff number	85369010
Country of origin	DE

A 1,5 -12 - Ferrule

3202588

<https://www.phoenixcontact.com/us/products/3202588>



Technical data

Product properties

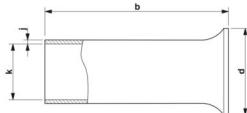
Product type	Cable end sleeve
Conductor category	stranded conductors, class 2, 5, 6 / B, C, K, M
Product property	UL certified
	Made from soft tin-plated electrolytic copper

Connection data

Conductor connection

Conductor cross section flexible max.	1.5 mm ²
Conductor cross section AWG max.	16
Stripping length	12 mm

Dimensions

Dimensional drawing	
Sleeve length	12 mm
Length contact range	12 mm
Maximum stripping length	12 mm
Ferrule diameter	1.7 mm
Sleeve wall thickness	0.15 mm
Inner dimensions of the insulating collar	2.8 mm

Material specifications

Color	silver-colored
Material	CU-DHP
Flammability rating according to UL 94	HB
Coating	galvanically tin-plated
Surface characteristics	Tin-plated
Components	free from silicone and halogen

Mechanical properties

Technical data

Sleeve length	12 mm
---------------	-------

Environmental and real-life conditions

Ambient conditions

Permanent temperature	105 °C
-----------------------	--------

A 1,5 -12 - Ferrule



3202588

<https://www.phoenixcontact.com/us/products/3202588>

Short-term temperature	120 °C
------------------------	--------

Standards and regulations

Design according to standard	DIN 46228-1, UL 486F-A
------------------------------	------------------------

A 1,5 -12 - Ferrule

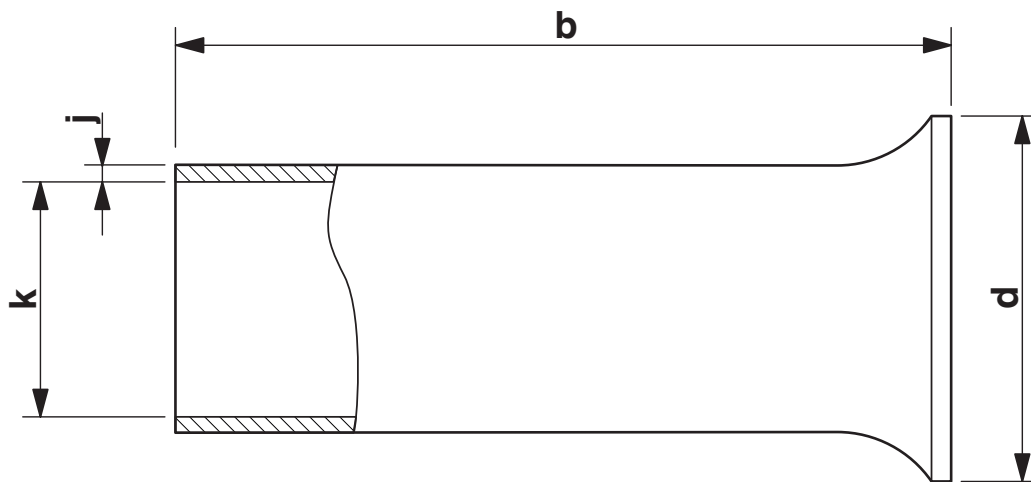
3202588

<https://www.phoenixcontact.com/us/products/3202588>



Drawings

Dimensional drawing



Sleeve length (b), insulating collar inner dimension (d), sleeve diameter (k), sleeve wall thickness (j)

A 1,5 -12 - Ferrule

3202588

<https://www.phoenixcontact.com/us/products/3202588>



Approvals

🔗 To download certificates, visit the product detail page: <https://www.phoenixcontact.com/us/products/3202588>



cULus Listed

Approval ID: E488001

A 1,5 -12 - Ferrule

3202588

<https://www.phoenixcontact.com/us/products/3202588>



Classifications

ECLASS

ECLASS-11.0	27400201
ECLASS-13.0	27400201
ECLASS-12.0	27400201

ETIM

ETIM 9.0	EC000005
----------	----------

UNSPSC

UNSPSC 21.0	27121700
-------------	----------

A 1,5 -12 - Ferrule



3202588

<https://www.phoenixcontact.com/us/products/3202588>

Environmental product compliance

EU RoHS	
Fulfills EU RoHS substance requirements	Yes, No exemptions
China RoHS	
Environment friendly use period (EFUP)	EFUP-E
	No hazardous substances above the limits
EU REACH SVHC	
REACH candidate substance (CAS No.)	No substance above 0.1 wt%

Phoenix Contact 2025 © - all rights reserved
<https://www.phoenixcontact.com>

Phoenix Contact USA
586 Fulling Mill Road
Middletown, PA 17057, United States
(+717) 944-1300
info@phoenixcon.com